



# Amendment 42

## Species Model Outputs

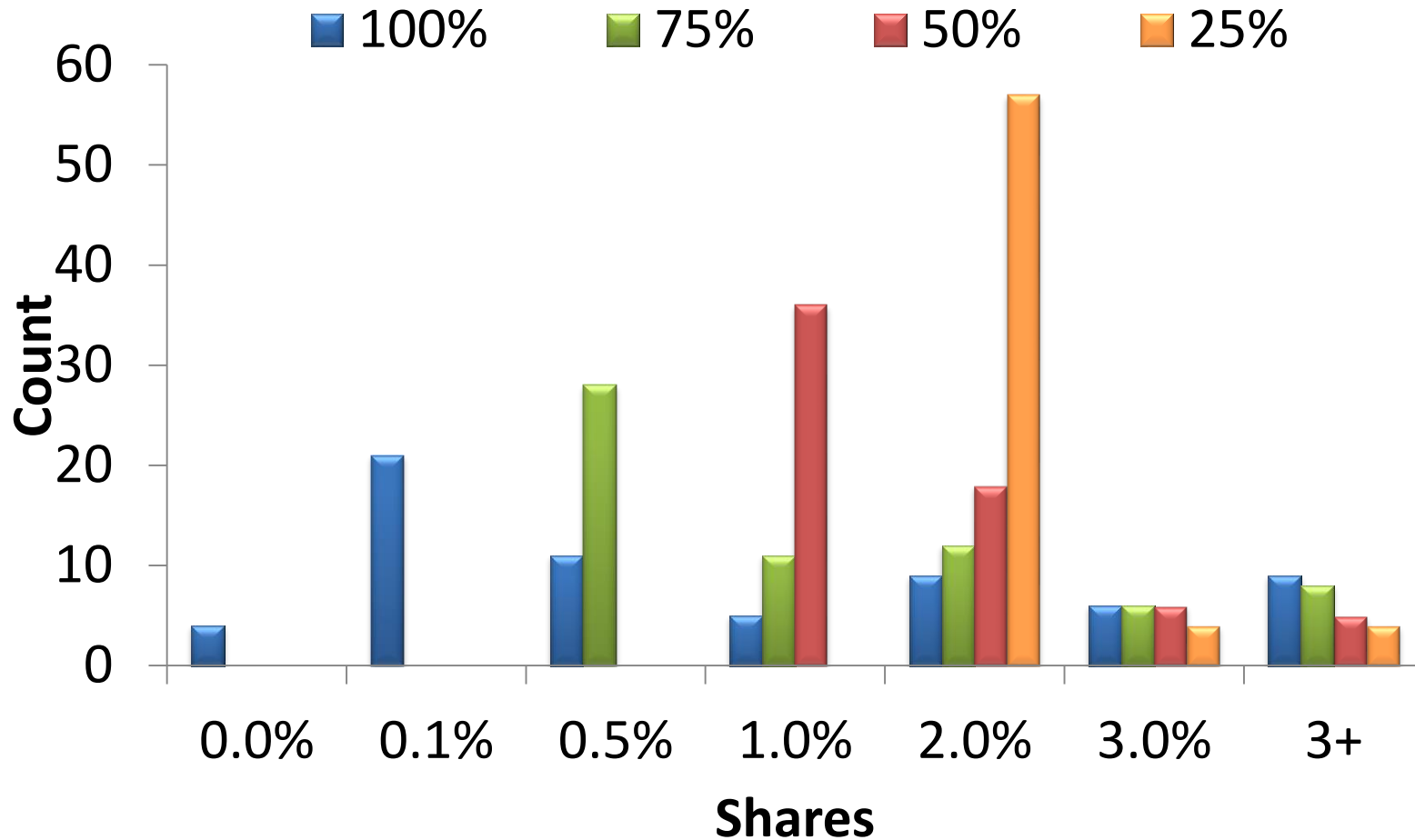


# Models Investigated

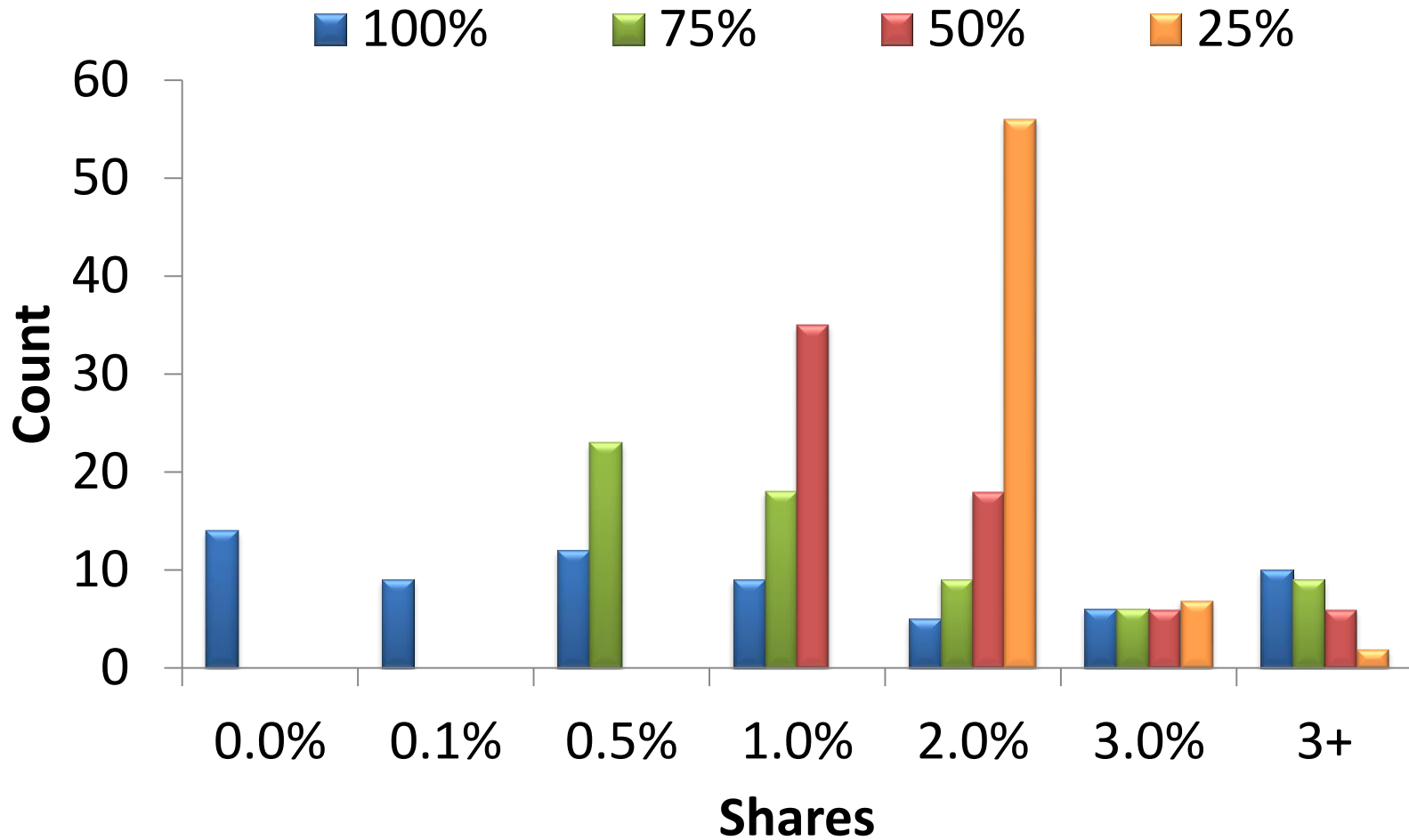
- ❖ Action 5: 2 2011-2015
- ❖ Action 7.1:
  - 2A: 2011-2015
  - 2B: 2011-2015, drop lowest
  - 2C: 2011-2015, max year
- ❖ Action 7.2: Proportions vs Equal
  - 100% proportional
  - 75% proportional
  - 50% proportional
  - 25% proportional



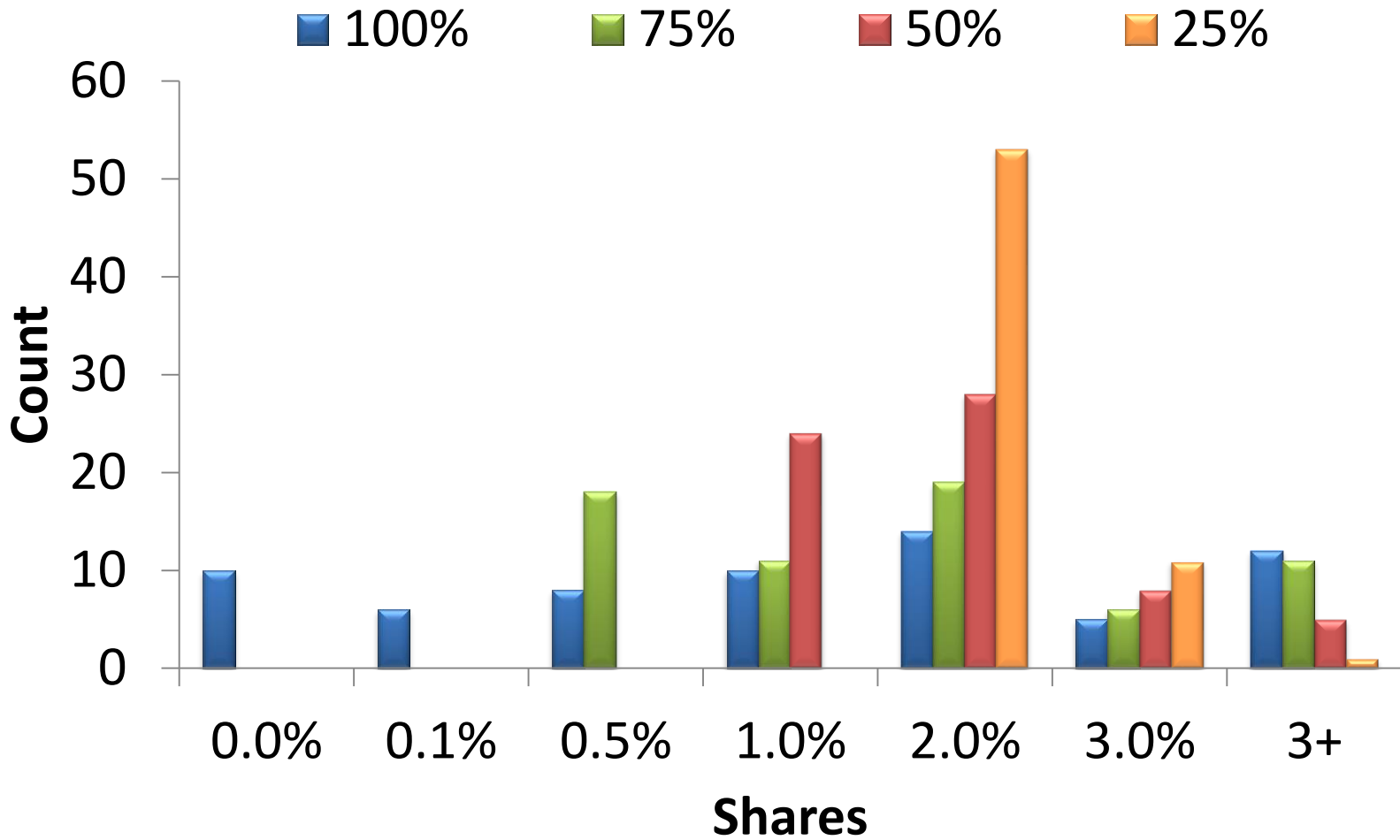
# Gray Triggerfish 5 Year Avg



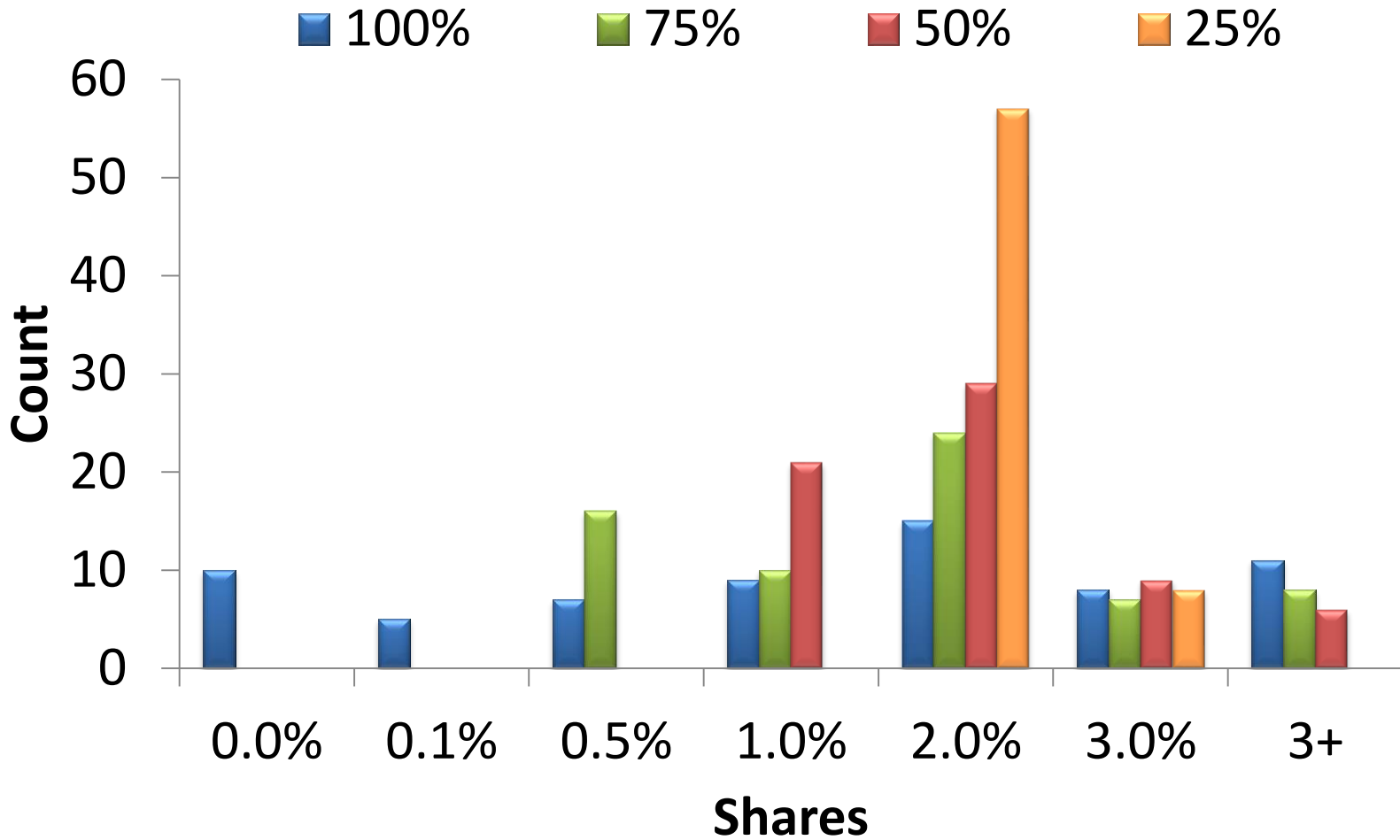
# Greater Amberjack 5 Year Avg



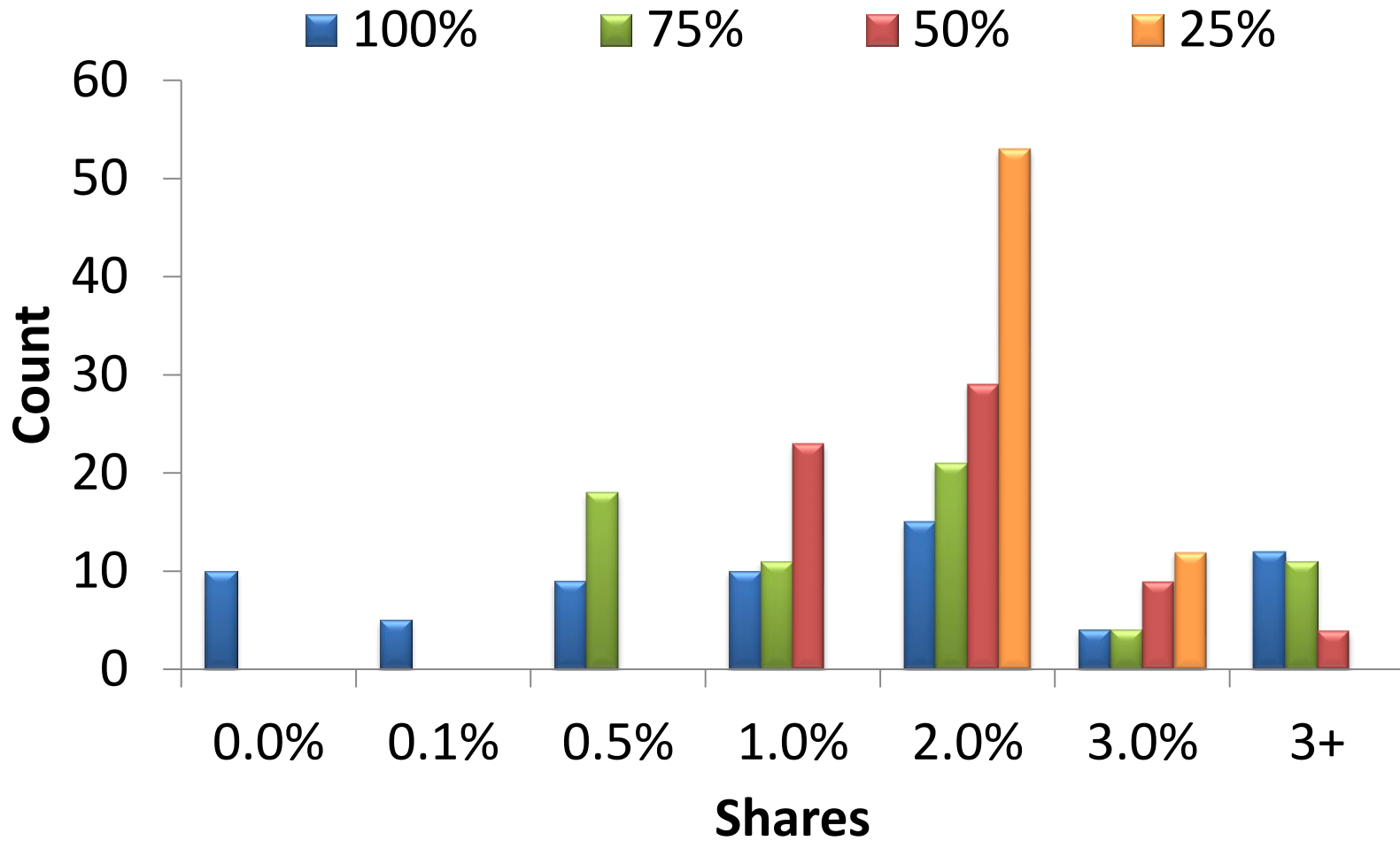
# Red Snapper 5 Year Avg



# Red Snapper Max Year



# Red Snapper Drop Lowest



# Red Snapper 100% proportional

## Action 7.1 Comparisons

