

# DRAFT PRODUCT NOAA FISHERIES



## Gray Snapper (*Lutjanus griseus* aka mangrove snapper)

**Range:** widely distributed in western Atlantic from Florida to Brazil, the Caribbean, and the northern Gulf of Mexico

**Spawning times:** spawn during summer (May - Sept) in offshore waters around structured reef habitats

**How long they live:** most common gray snapper ages for recreational fishery were 5-12 years with maximum of 28 years

**When they are sexually mature:** 6.5-7in SL between 2 and 3 years of age

## Current Regulations:

Bag limit of 10 per angler



12 inch min

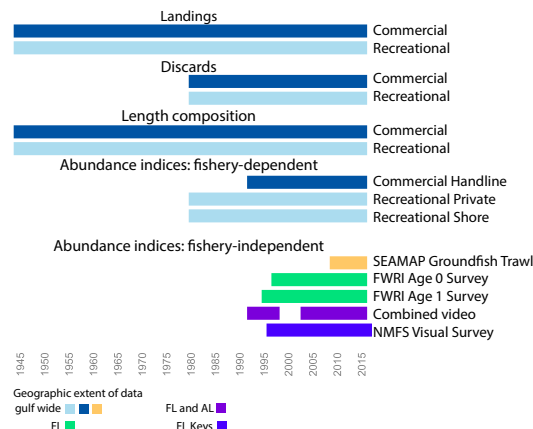
in AL, MS, LA, and Federal Waters



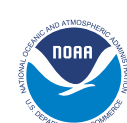
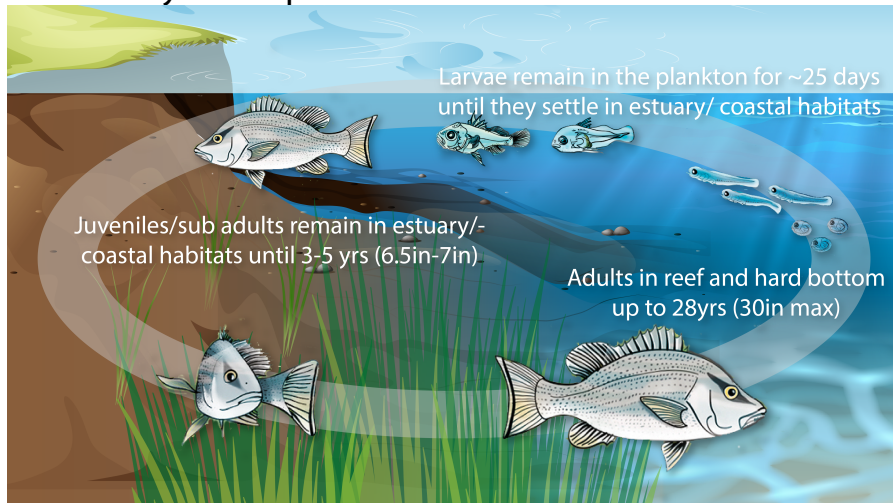
10 inch min

in FL State Waters

## Data Sources:



## Life History Conceptual Model:

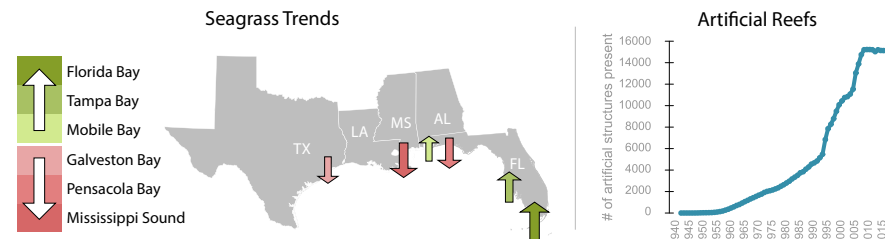


# DRAFT PRODUCT NOAA FISHERIES

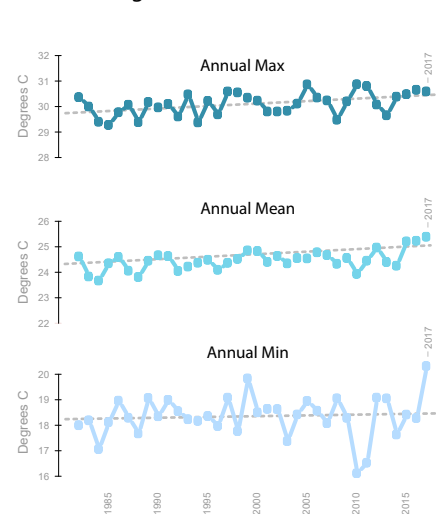


## Gray Snapper (*Lutjanus griseus* aka mangrove snapper)

**Stock Indicators - habitat trends over time:**

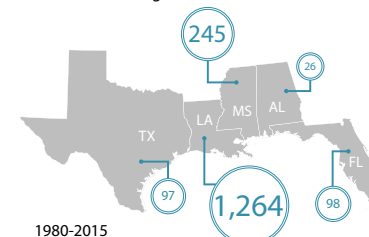


## Sea surface temperatures in the adult range (Northern Gulf of Mexico)

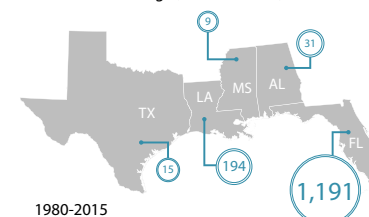


## Average annual landings by state (1980-2015)

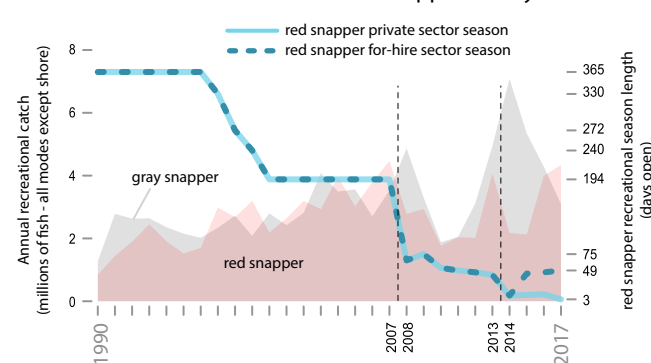
Commercial landings (In millions of lbs)



Recreational landings (In 1000s of lbs)



## Potential influence of red snapper fishery:



Sudden decreases in access to red snapper (such as the reductions in season length from 2007 to 2008 and 2013 to 2014) may cause short-term increases in targeting of other snapper species, such as gray snapper.