



# Eighth Coast Guard District

## Mexican Lancha Threat Overview and Impact Analysis Model Results

27 January 2015



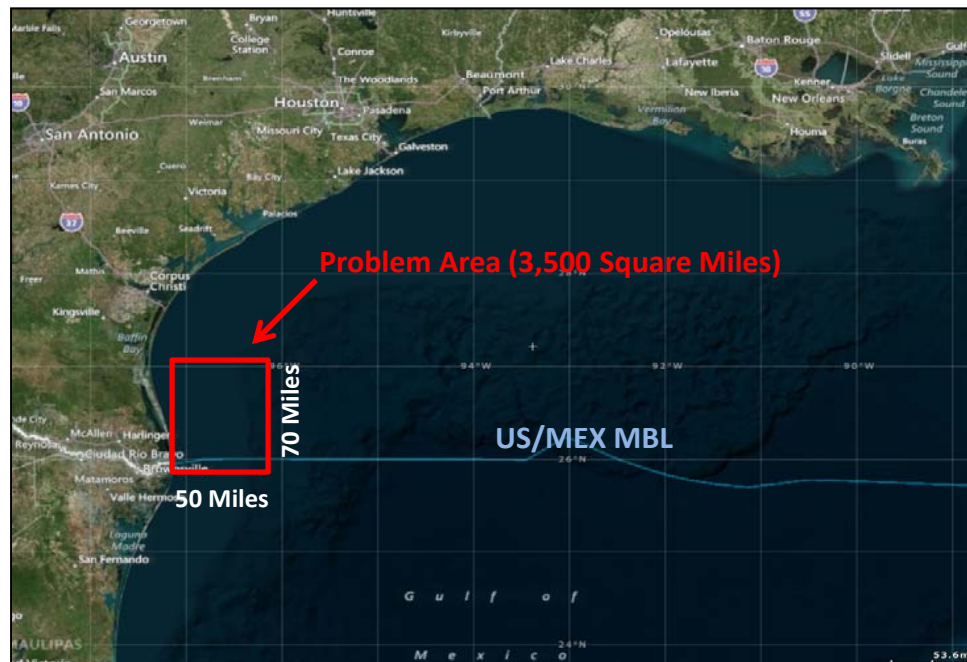




# The Mexican (MEX) Lancha Threat

## • Problem Set

- MEX lanchas are known to operate north of the U.S./MEX Maritime Boundary Line (MBL) on a regular basis
- There is no legitimate reason for a MEX lancha to operate north of the MBL
- Activity consists primarily of illegal fishing in U.S. Exclusive Economic Zone (EEZ)





# MEX Lancha Overview

- **Lancha Characteristics**

- 20-30 ft long with single 75-200 horsepower outboard motor
- Fiberglass and wood hulls
- Typical crew consists of 2-4 persons
- Lanchas utilize gill net, long-line and hand-line gear to catch targeted species







# Incursions in the U.S. EEZ

- **Targeted Species**

- MEX lanchas engaged in illegal fishing typically target red snapper and shark

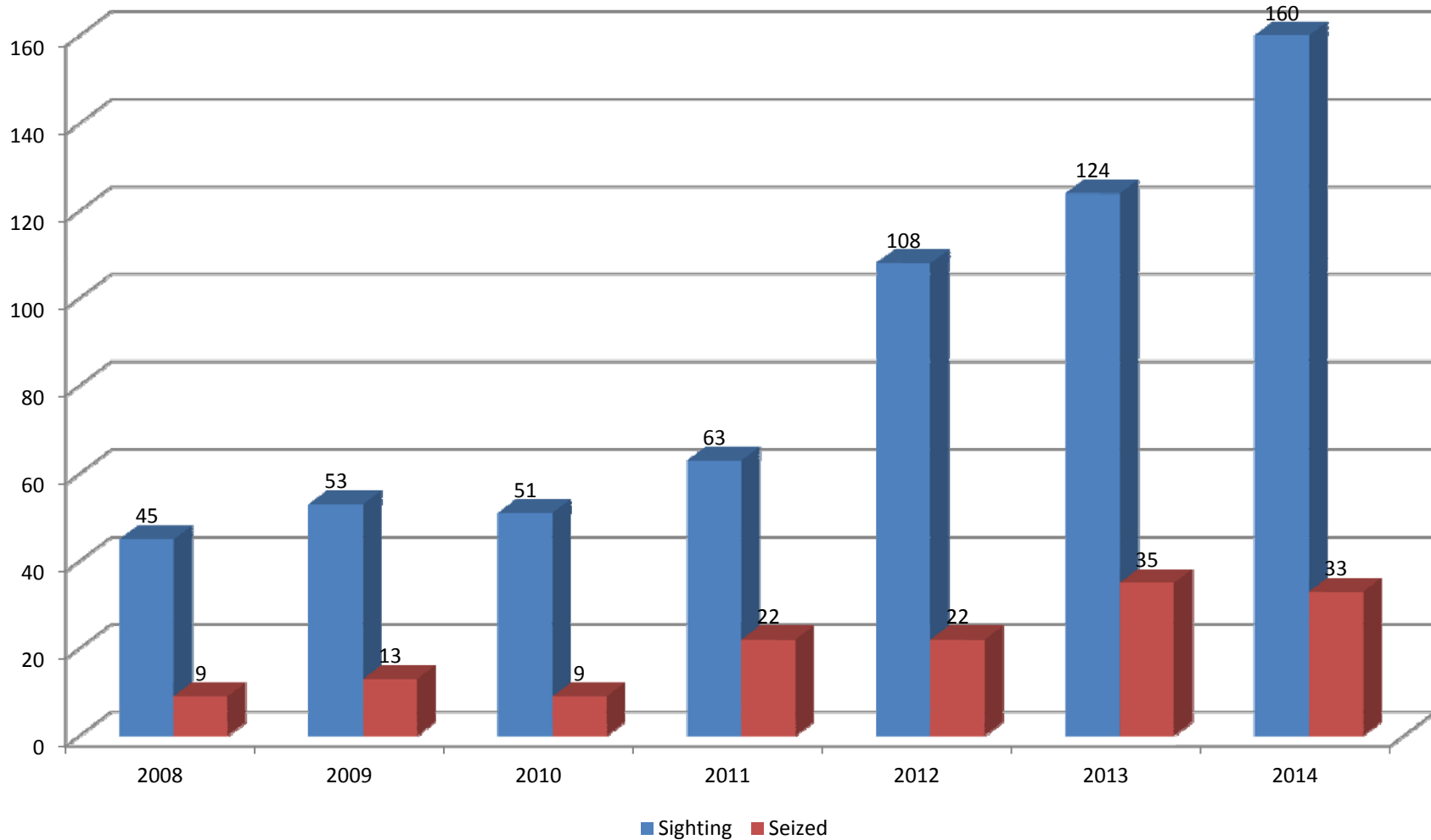
- **Unattended Fishing Gear**

- To ensure maximum catch, long line and gill net gear are typically deployed and left unattended for 5 – 6 hours
- Lanchas are known to abandon their gear due to law enforcement presence or inclement weather
- Gill nets are an extremely indiscriminate means of fishing and, when abandoned, continue to kill large volumes of marine life





# MEX Lancha Detections/Seizures (FY08-FY14)





# MEX Lancha Incursions

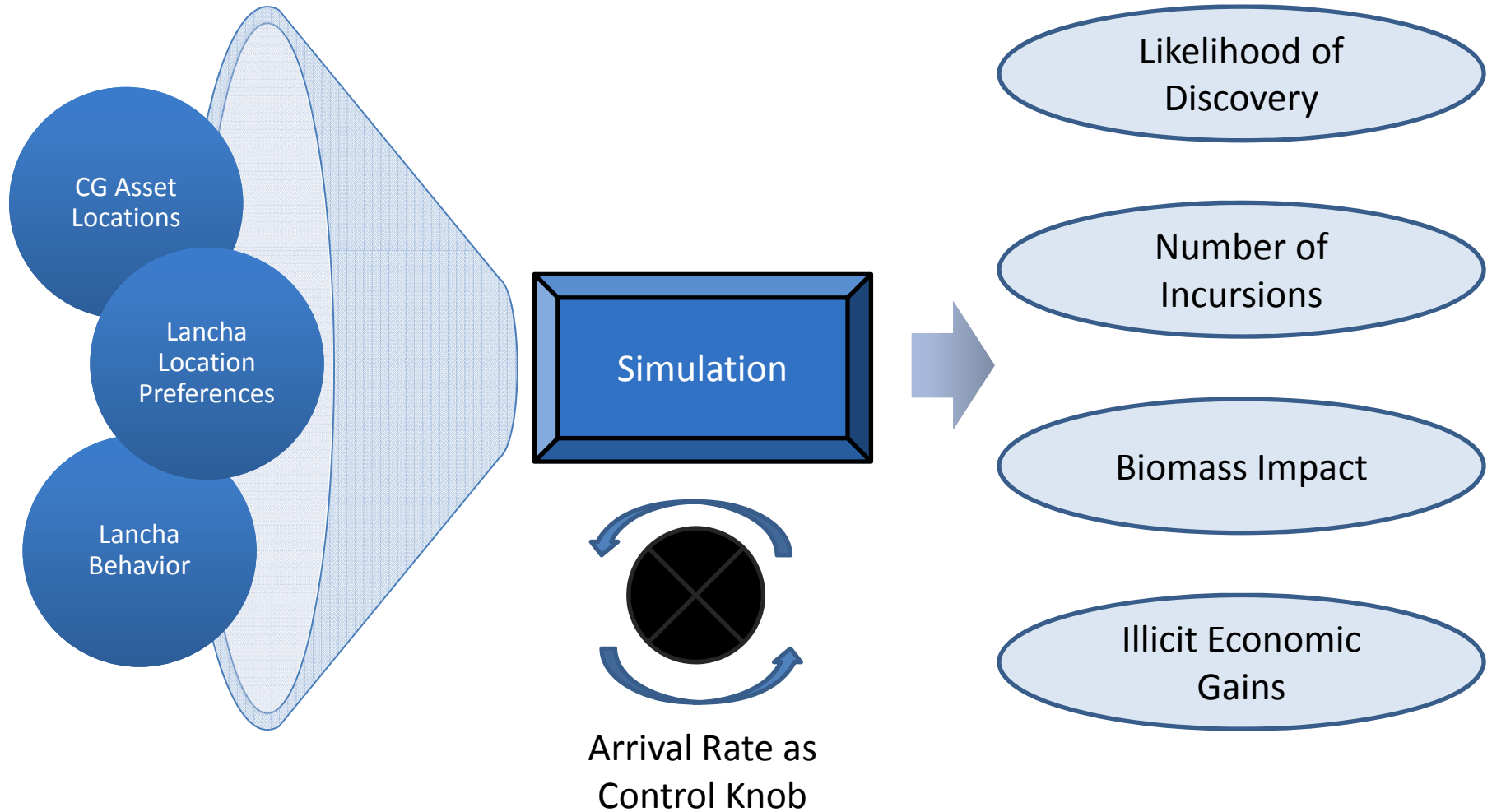


- **U.S. Fishery Impact Estimate (Average CY2013-14)**

- Estimated 1,138 lancha incursions/year
- Typical catch for one lancha is 800 – 1,500 lbs/trip
- Larger lanchas are known to catch upwards of 3,000 lbs/trip
- 1,525,715 lbs of red snapper poached from U.S. waters by MEX lanchas over the past 2 years
- 30-31 MAR: 7 lanchas sighted, 5 seized containing 2,589 red snapper; new 24-hour record



# Simulation





# MEX Lancha Incursions

Parameters	CY 2013 Average	CY 2014 Average	Two Year Average (CY13-14)
95% CI Lower Bound (lbs)	769,696	762,562	766,129
Total Red Snapper Impacted (lbs)	777,117	765,746	771,432
95% CI Upper Bound (lbs)	784,538	768,930	776,734
Red snapper seized by lanchas (lbs)	768,676	757,039	762,857
Other catch seized by lanchas (lbs)	439,957	444,753	442,355
Average number of lancha sightings/detections	139	211	175
Average number of lanchas compelled South	115	146	130
Average number of lancha seizures/interdictions	32	32	32
Average number of undetected lanchas	1016	995	1006
Red snapper seized by Law Enforcement (lbs)	8441	8708	8574
Other catch seized by Law Enforcement (lbs)	7545	7077	7311
Average Incursions	1,133	1,143	1,138
Standard Deviation Incursions	38.26200728	38.70211124	38.48205926
Std Deviations Snapper	37,861.96	36,324.89	37,093.43
Coast Guard Detection Percentage	12%	18%	15%





# Current Lancha Disposition Policy

- **Standard Course of Action**

- Lancha, catch and gear are seized
- Crew is transferred to CBP for deportation to Mexico
- Lanchas are destroyed





# WANTED



**TEXAS PARKS AND WILDLIFE DEPARTMENT AND THE U.S. COAST GUARD ARE CURRENTLY INVESTIGATING MULTIPLE CASES INVOLVING ILLEGAL FISHING ACTIVITIES ALONG THE TEXAS/MEXICO BORDER. THESE ACTIVITIES INCLUDE ILLEGAL LONG LINING, GILL NETTING, CRABBING, HOOP NETTING, SHRIMPING, ETC. THE GULF OF MEXICO, RIO GRANDE RIVER, FALCON LAKE, AND AMISTAD LAKE ARE INCLUDED IN THE AFFECTED AREAS. THESE ACTS OF ILLEGAL AND UNREPORTED FISHING ADVERSELY AFFECT BOTH THE RECREATIONAL AND COMMERCIAL FISHING INDUSTRIES. ANY INFORMATION RELATED TO SUCH ILLEGAL FISHING ACTIVITIES SHOULD BE REPORTED TO THE TEXAS PARKS AND WILDLIFE DEPARTMENT OR THE U.S. COAST GUARD.**



**Operation Game Thief**  
 1(800)792-GAME [www.ogttx.com](http://www.ogttx.com)

OR TEXT TIP TO 847411 TO TPWD



**U.S. COAST GUARD**  
 (361)939-6393

*Photos provided by photographer Erich Schlegel, Texas Parks and Wildlife Department, and the U.S. Coast Guard.*