



**NOAA
FISHERIES**

Southeast
Regional
Office

Season Length Projections: Gulf Red Snapper



Quotas

Gulf-wide ACL = 7,010,000 pounds whole weight

Sector	Annual Catch Target	Headboat Collaborative
Gulf-wide	5,608,000	
For-Hire*	2,372,184	279,657
Private	3,235,816	

** Projected season length is based on ACT as adjusted for Headboat Collaborative quota*

State Seasons

State Season (days)		Details
FL	70	Open May 23 - July 12, resume Sept. 5-7 and finish with Saturdays and Sundays throughout Sept.-Oct., closes Nov. 1.
AL	0	Compatible with federal season
MS	~36	Open federal season, 3-day weekends July, Oct
LA	287	Opens Mar 20
TX	365	Open year-round, 4-fish bag limit in state waters, 15" minimum size limit

Note: Seasons for FL, AL, and MS have not been finalized

Data Inputs

Source	Time Period	Details
Marine Recreational Information Program	2004-2014	Landings and PSE by wave, recalibrated for changes in angler intercept survey
Texas Parks and Wildlife Department	2004-2014	Landings by wave from SEFSC Recreational ACL dataset, with 2013 used as a proxy for May-Dec 2014; CVs from TPWD staff
Louisiana Creel	2013-2014	Weekly landings and error estimates from LA Creel staff
Southeast Region Headboat Survey	2004-2014	Monthly landings through 2013 from SEFSC Recreational ACL Data (Feb 2015) and 2014 landings from SRHS staff
SEFSC Recreational ACL Dataset	2004-2014	Average weights by year and mode of fishing

Projection Scenarios

A

Charter catch rates equal 2014 catch rates, but average weight increase as projected. Headboat and Private catch rates and average weights equal 2014 .

B

All catch rates equal 2014 catch rates. All average weights increase as projected.

C

All catch rates and average weights equal 2014 catch rates and average weights.

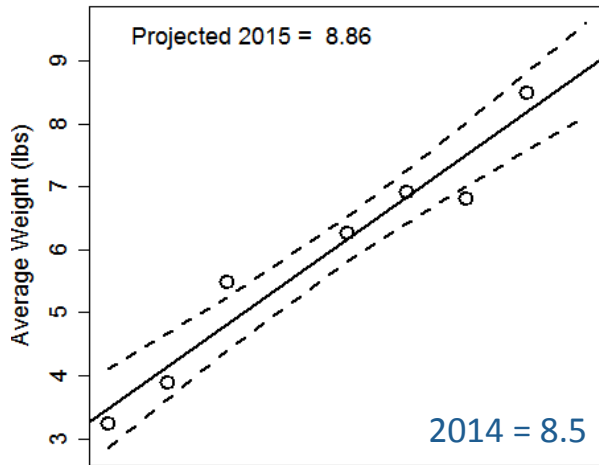
Many other catch rate and average weight scenarios were evaluated using regressions based approaches on different input time series and predictor variables.



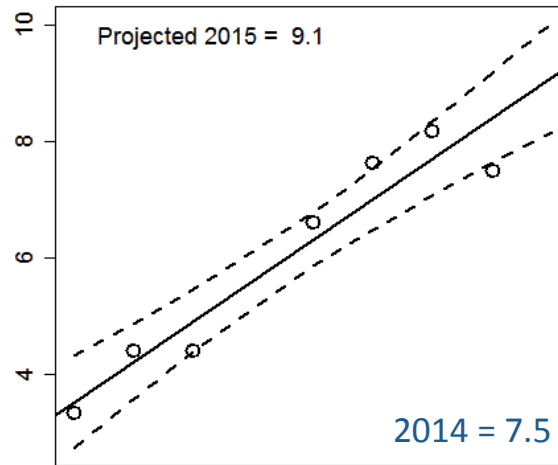
Average Weights

Federal average weights from June 2004-2014 used as inputs

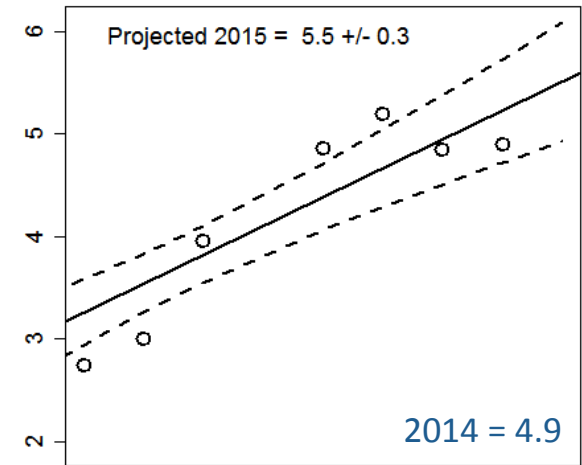
Charter Average Weight (East)



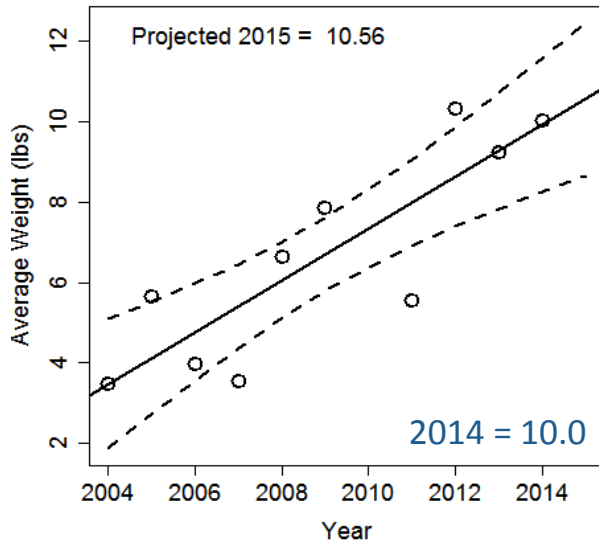
Private Average Weight (East)



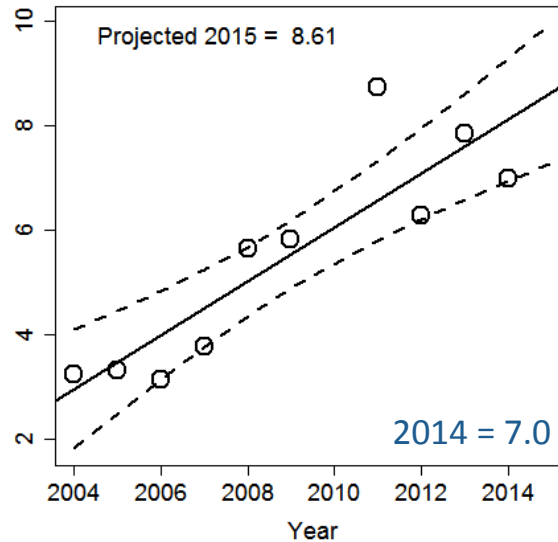
Headboat Average Weight (East)



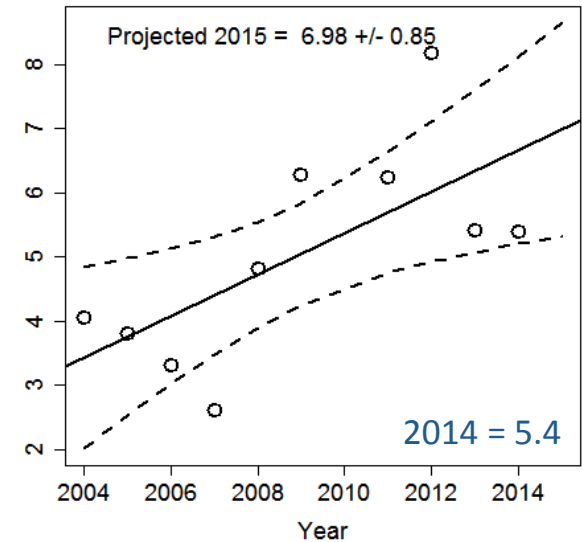
Charter Average Weight (West)



Private Average Weight (West)



Headboat Average Weight (West)



Catch Rates

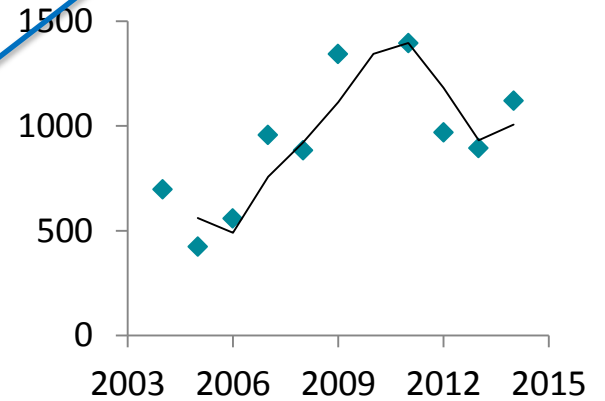
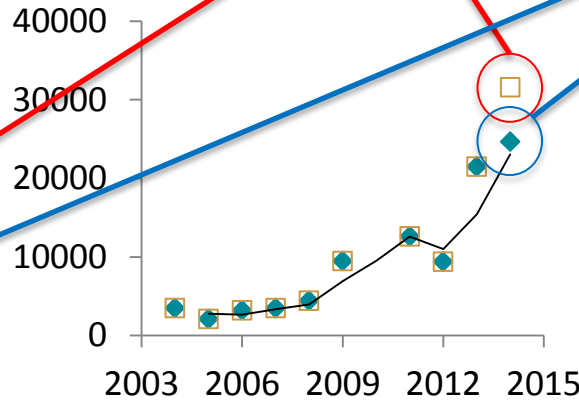
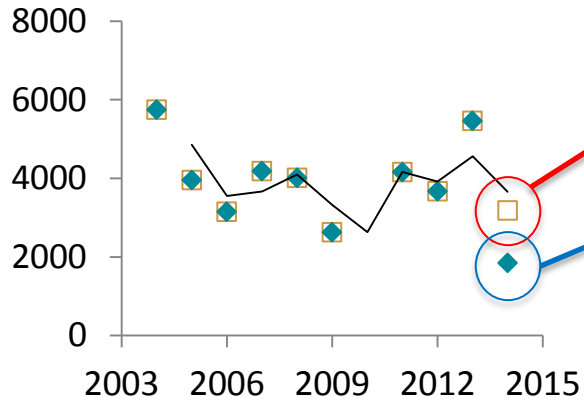
2014a (MRIP Wave 3)

2014 (MRIP June 1-9)

For-Hire (East)

Private (East)

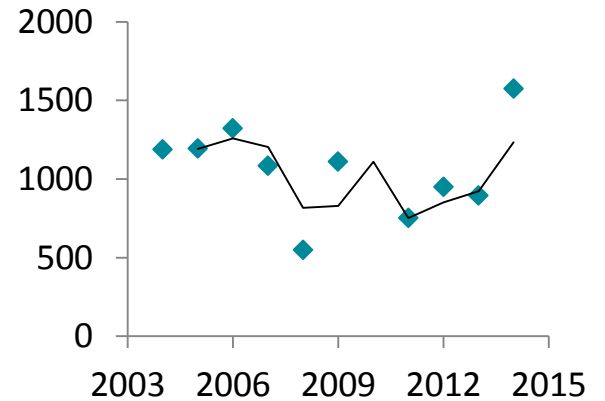
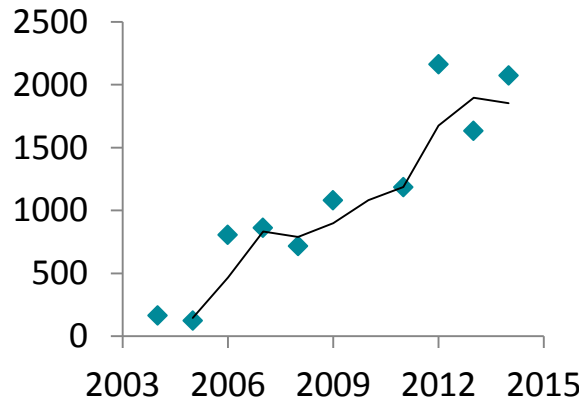
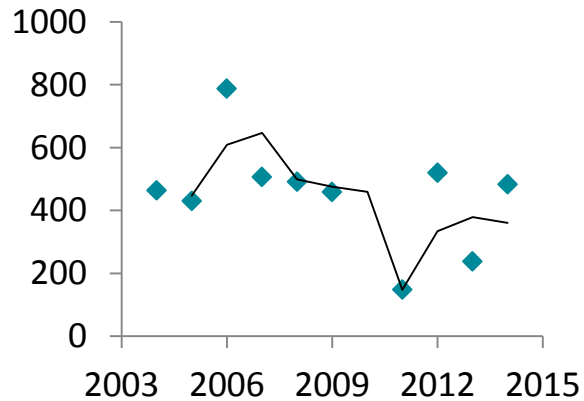
Headboat (East)



For-Hire (West)

Private (West)

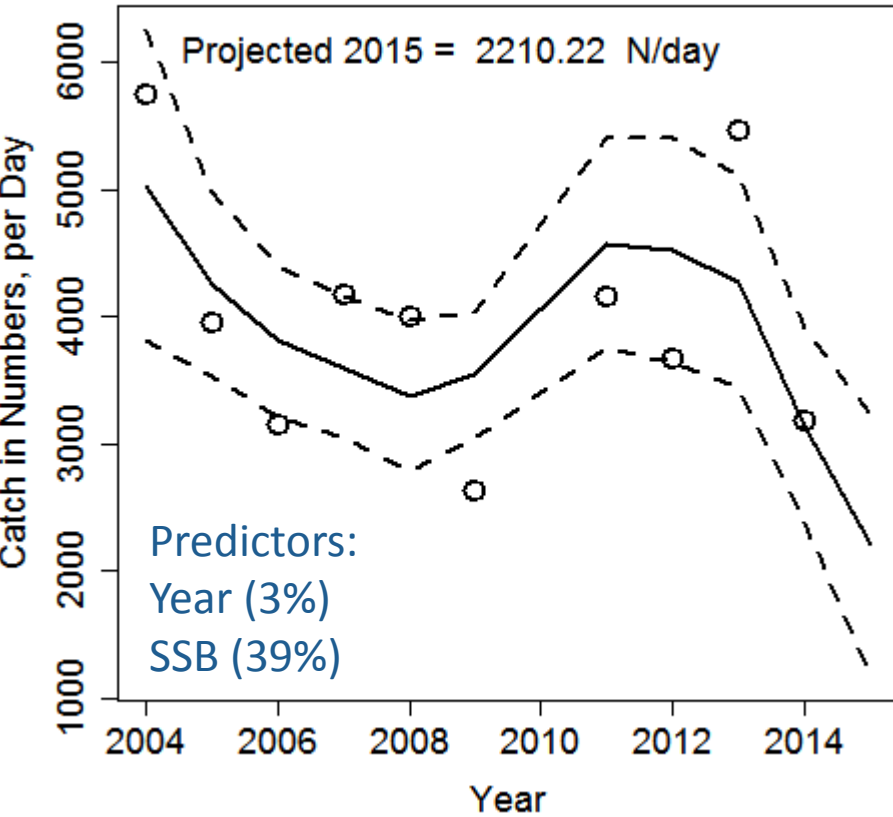
Headboat (West)



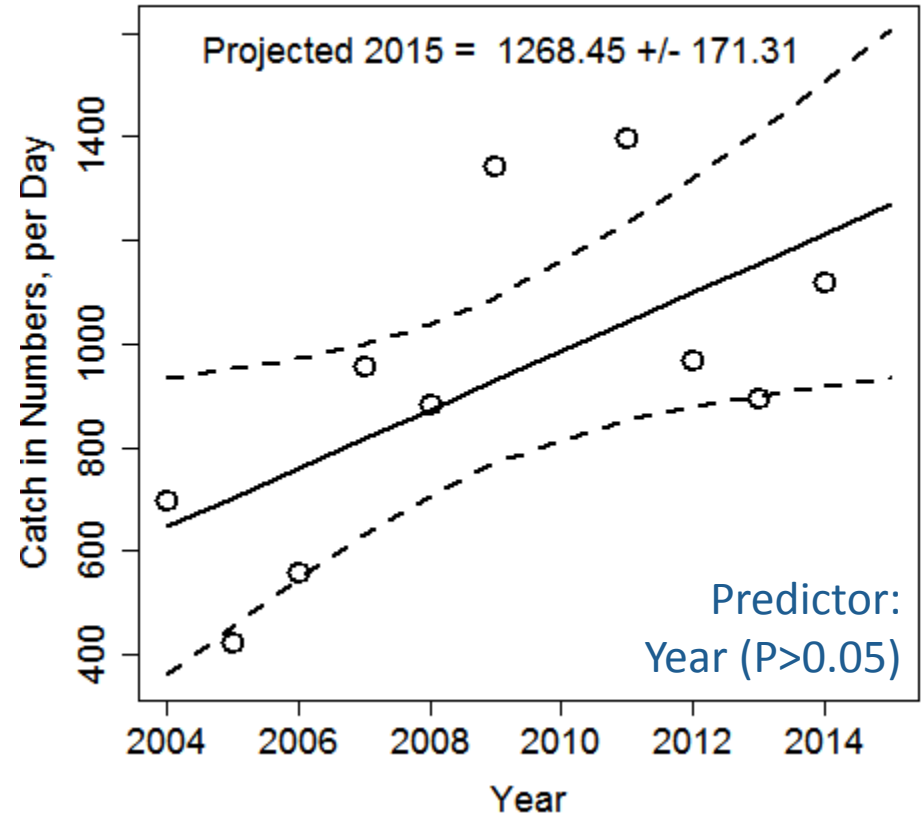
Federal catch rates shown for June 2004-2014 in # Fish per open federal day

State water catch rates (not shown) based on 2014 observed catch rates in pounds/day

Charter Catch per Day in Numbers (East)



Headboat Catch per Day in Numbers (East)

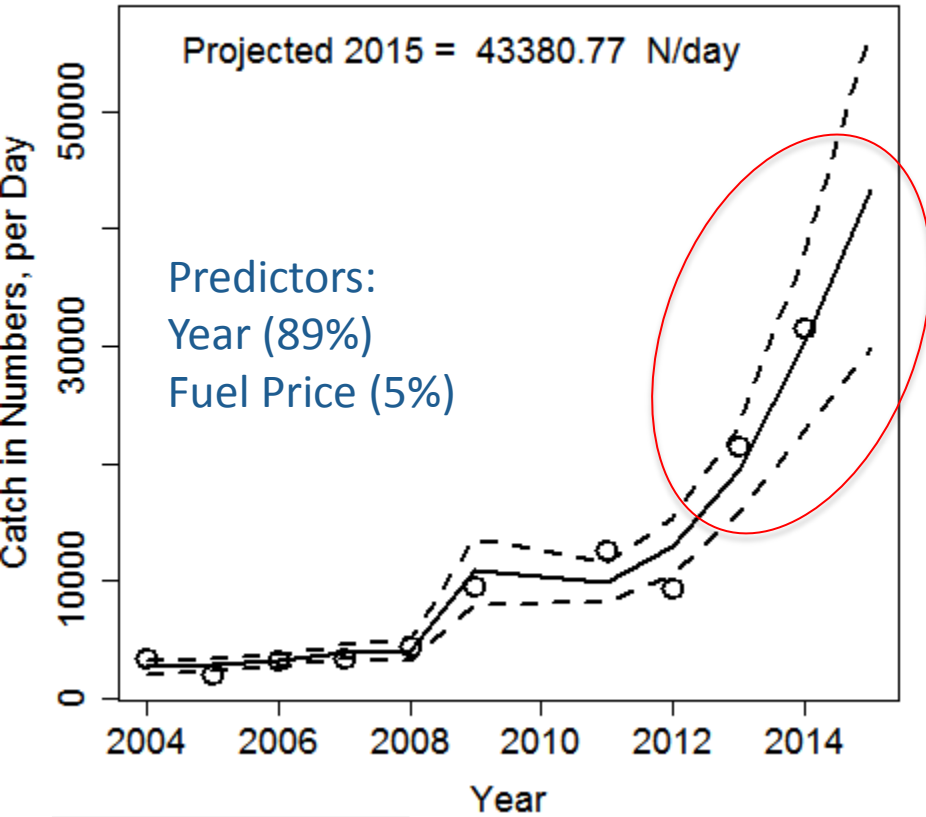


No significant regressions for Charter (West), Headboat (East), or Headboat (West)

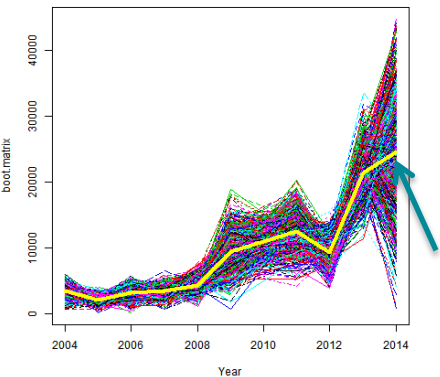
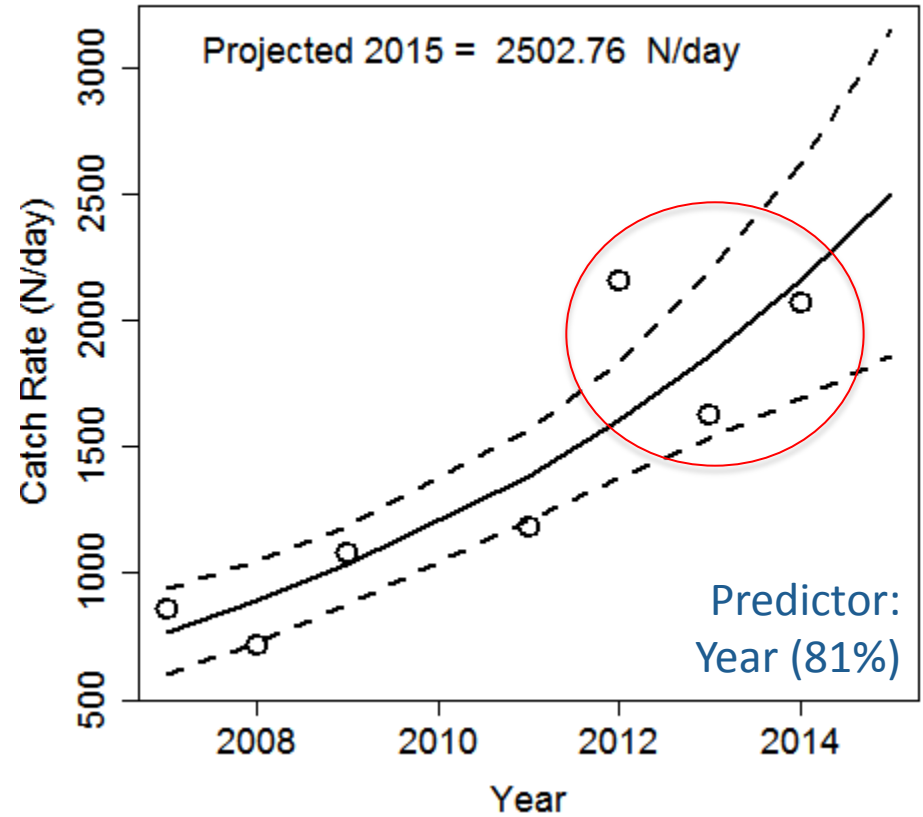
Charter (East) projection shows steep decline

Headboat (East) projection above last 3 years

Private Catch per Day in Numbers (East)



Private Catch per Day in Numbers (West)



Projected rate of increase for Private (East) may be unrealistic

Projected catch rate for Private (West) slightly higher than past two seasons.

Higher uncertainty in 2014 Private data due to short federal season

Season Length Projections

With Sector Separation in effect and non-compatible state seasons:

Run	Catch Rates			Average Weights			Season Length	
	Headboat	Charter	Private	Headboat	Charter	Private	For-Hire	Private
A	Const (2014)	Const (2014a)	Const (2014)	Const (2014)	Projected (2014a)	Const (2014)	45	11
B	Const (2014a)	Const (2014a)	Const (2014a)	Projected (2014a)	Projected (2014a)	Projected (2014a)	45	7
C	Const (2014a)	Const (2014a)	Const (2014a)	Const (2014a)	Const (2014a)	Const (2014a)	46	9

With Sector Separation and compatible state seasons:

Run	Season Length	
	For-Hire	Private
A	45	16
B	45	9
C	46	12

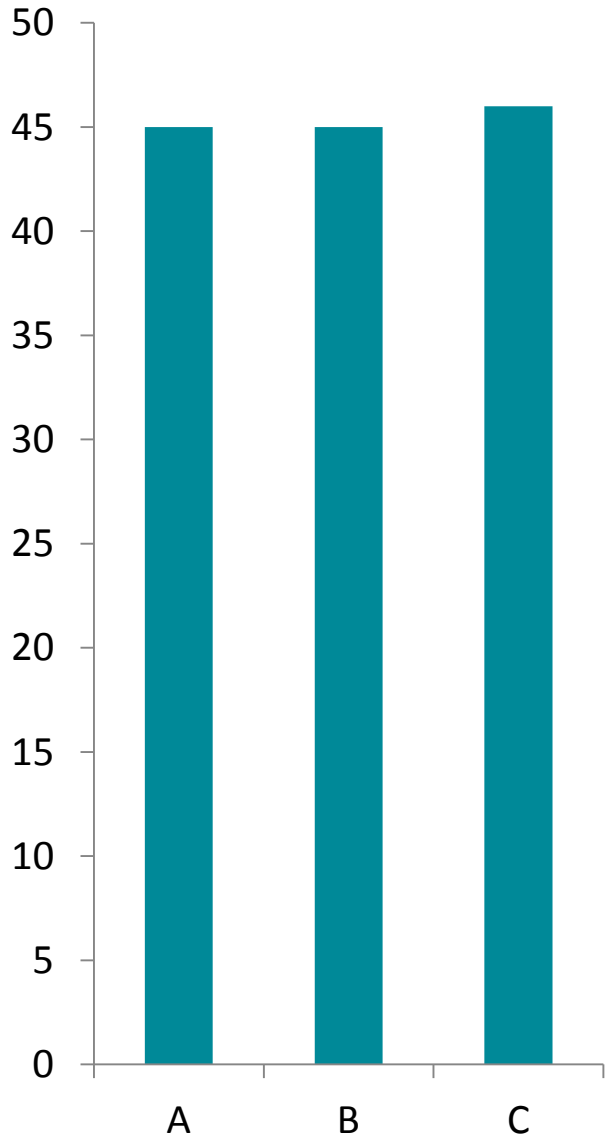
With no Sector Separation and compatible state seasons:

Run	Season Length
A	21
B	15
C	18

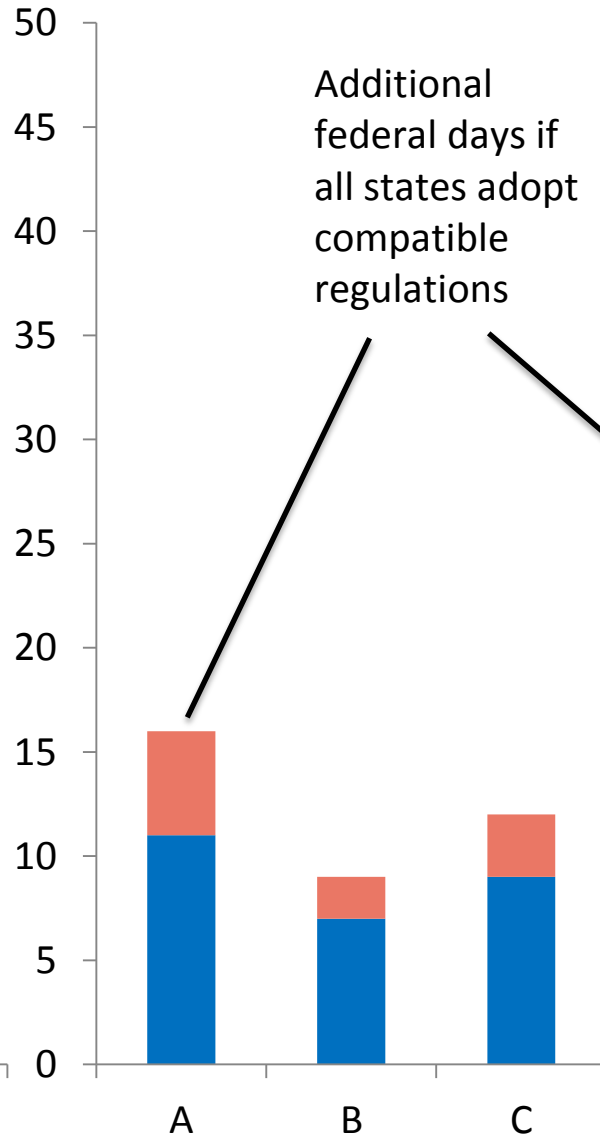
With no Sector Separation and non-compatible state seasons:

Run	Season Length
A	17
B	12
C	14

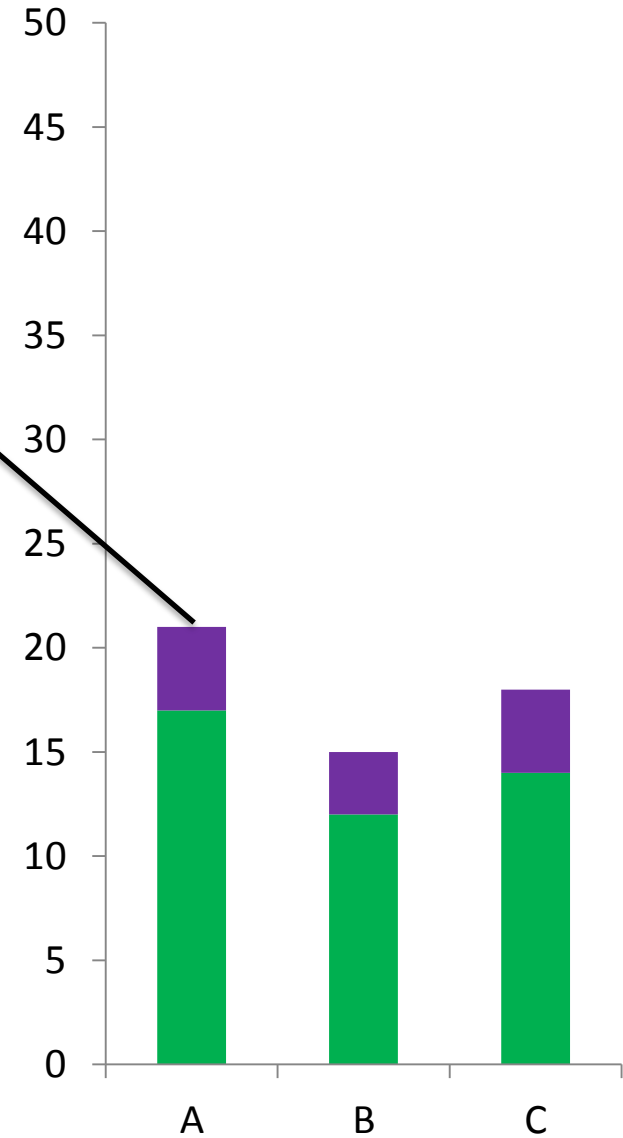
For-Hire



Private



No Sector Separation



QUESTIONS?



Image © Inventivefishing.com



NOAA FISHERIES