



BOEM Bureau of
Ocean Energy Management

BOEM Gulf of Mexico Offshore Wind

October 19, 2023

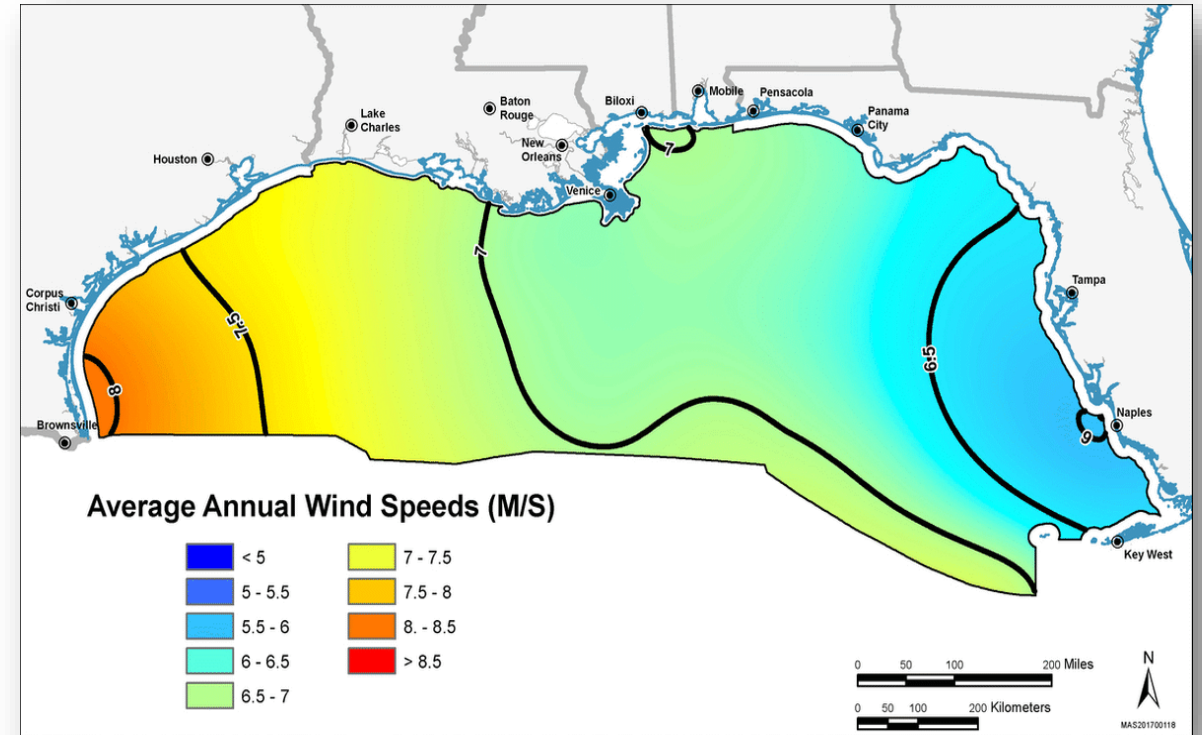
Presentation Outline

- Background
- GOM Wind 1
- Current and Future Actions



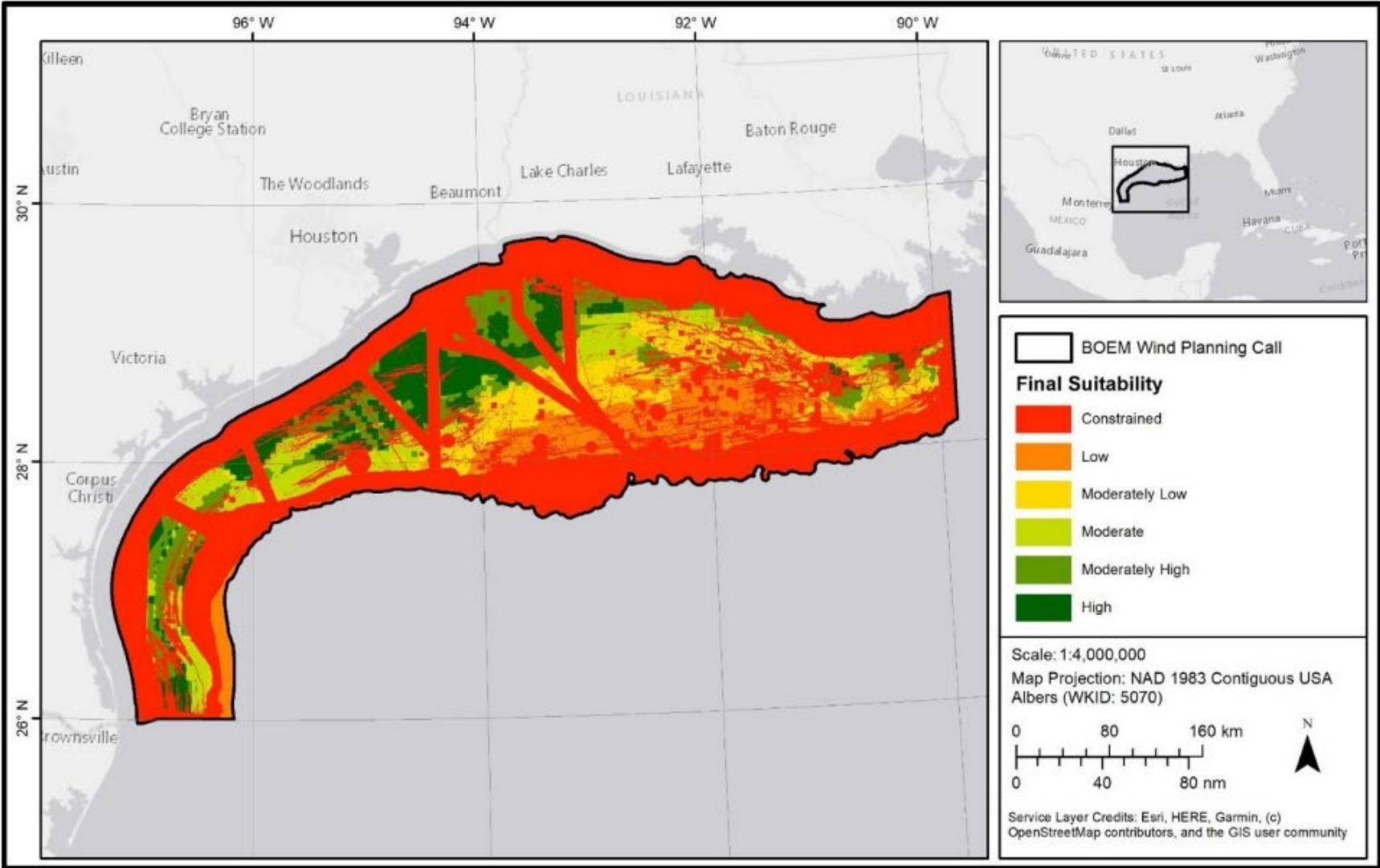
Gulf of Mexico Renewable Energy

- Louisiana Governor Edwards requested a Task Force on October 26, 2020.
- December 2020, Gulf of Mexico Region responded to the LA Task Force Request Letter with a region-based Task Force approach. The inaugural GOM Regional Task Force Meeting was held on June 15, 2021.
- Conducting outreach and engagement to collect data and information.
- Advantages: Proximity to oil and gas supply chain – leverage existing capabilities
- Challenges: Hurricanes – major hurricanes could increase turbine and substructure costs

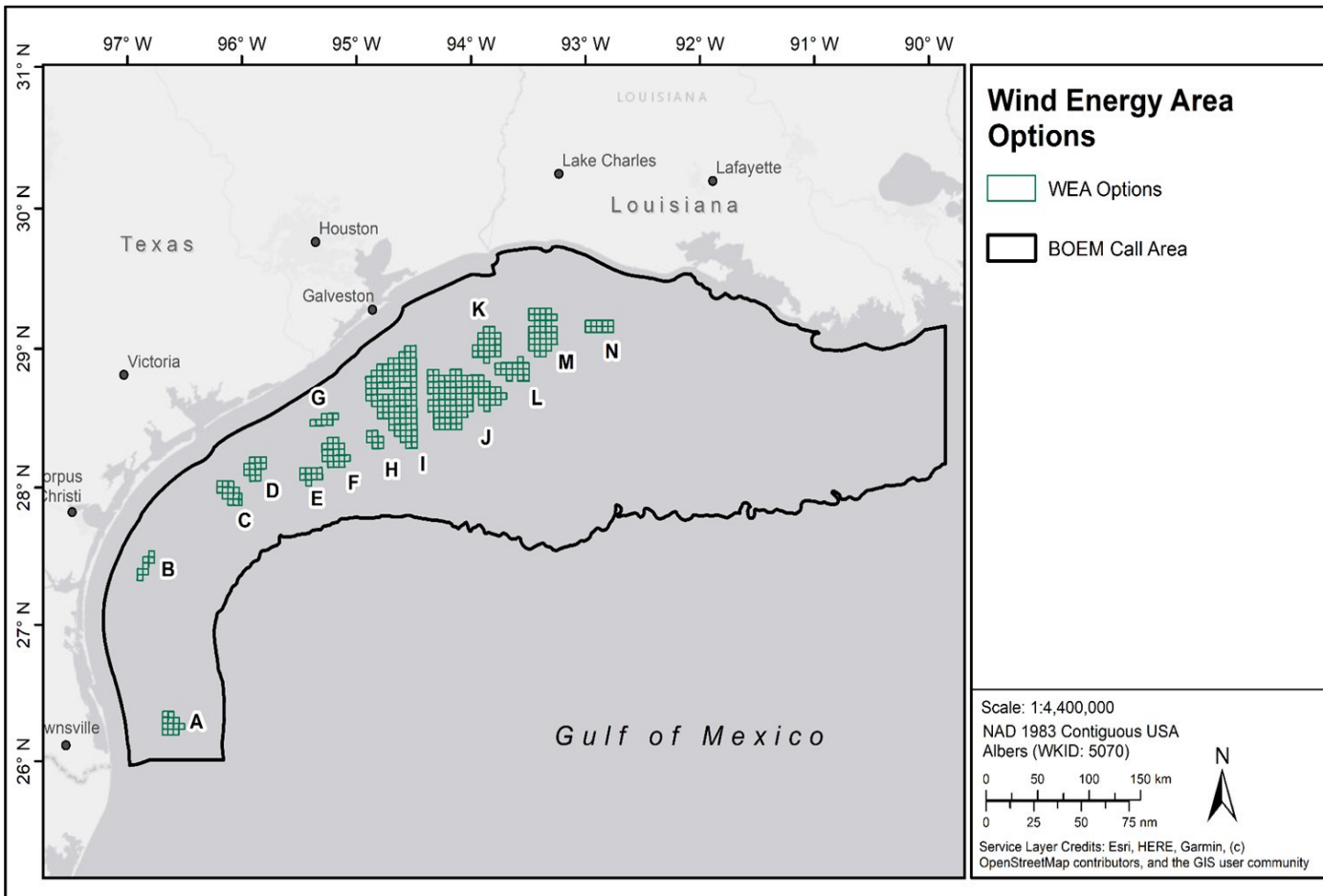


Model Layer Examples

Final suitability modeling results for the Call Area



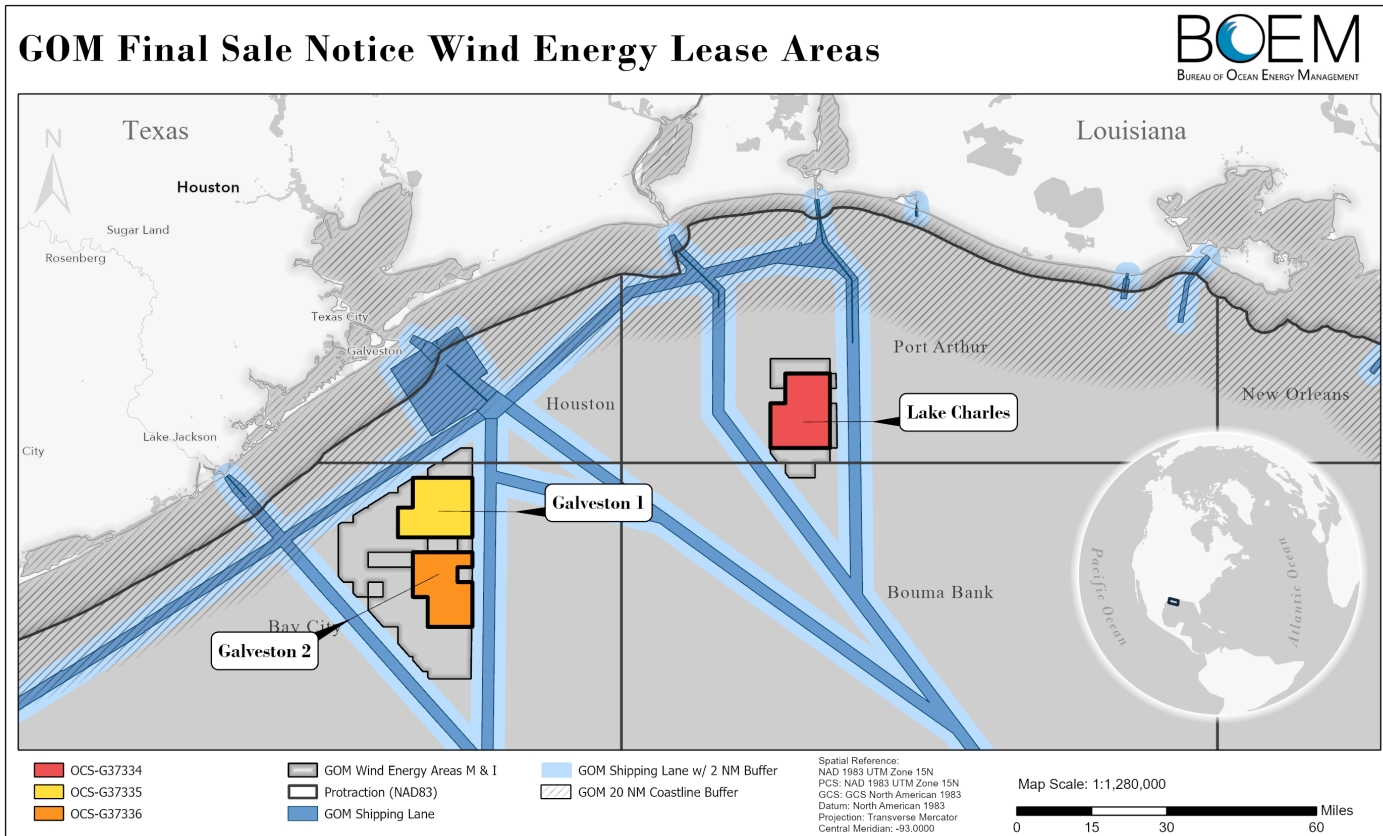
Background - Identified Wind Energy Area Options



- 14 WEAs were identified as possible options
- Option B was removed due to DOD conflicts
- The Programmatic Environmental Assessment covers the entire call area up to 18 leases.



Background – GOMW-1



- Options I and M were designated as Final Wind Energy Areas
- Two lease areas in WEA I and one lease area in WEA M were offered in GOMW-1
- 15 Companies qualified to participate in GOMW-1
- Three companies submitted Bidder Financial Forms, Conceptual Strategies and Bid Deposits
- Two companies participated in the auction and both bid on G-37334 – Lake Charles (WEA M)
- The provisional winner is RWE Offshore US Gulf, LLC (\$5.6M)



Lake Charles Lease Summary



Provisional Winner of the Gulf of Mexico Offshore Wind Energy Lease Area

OCS-G 37334

RWE Offshore US Gulf, LLC

\$5,600,000



DEVELOPABLE
ACRES

102,480



INSTALLATION
CAPACITY
(MW)¹

1,244



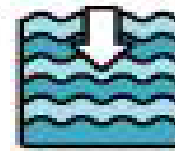
POWER
PRODUCTION
(GWh/yr)²

4,358,976



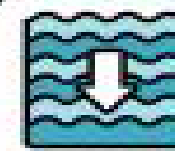
HOMES
POWERED³

435,400



MINIMUM
DEPTH

10 Meters



MAXIMUM
DEPTH

25 Meters

BOEM Bureau of
Ocean Energy Management

Notes:

¹ Based on 3 MW (based on 3 MW/capital)

² Formula = Capacity (MW) * 500 (kWh/yr) * 84 (capacity factor)

³ Based upon 300 homes per MW



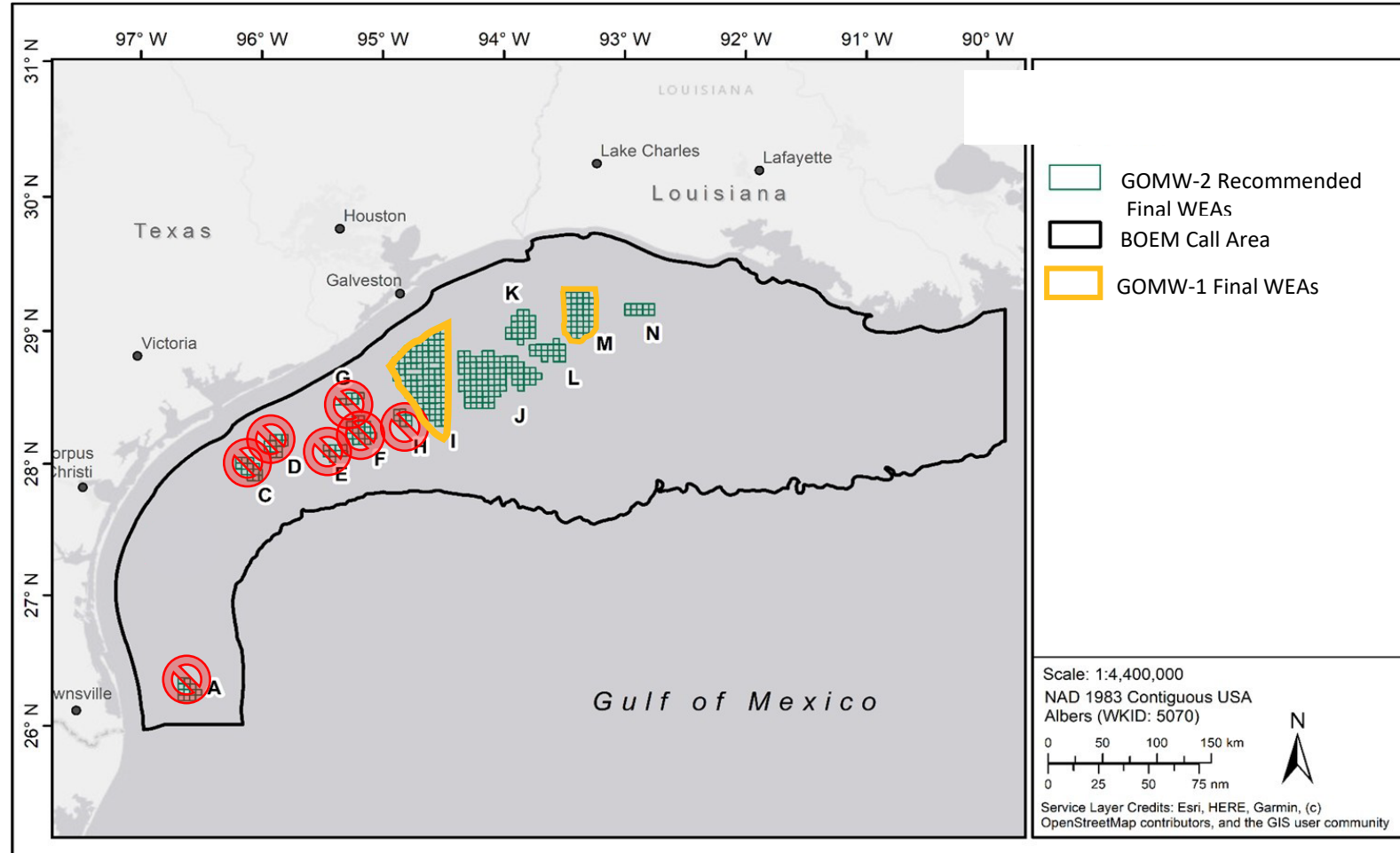
Substantive Comments Received on the Remaining 11 WEAs Options

- **Southern Shrimp Alliance** - WEA Options J, K, and L would present the least impacts to the shrimping industry. Not in favor of WEA F as it contains medium to high shrimping activity. If WEA Option F is removed, the SSA would not oppose leasing in WEA Option N.
- **US Coast Guard** - Ensure the 2 nm buffer is implemented around fairways due to the possibility of widening of lanes providing access to the Port of Houston. WEA Options K and L are between the port access fairways for Houston and are of particular concern. Review non-federal lightering data when considering lease areas within any designated Final WEAs.
- **DOD**: J, K, L and N were okay; F was in Radar line.
- **Industry (ACP/Shell)** - Need 100,000 acres or greater for economic viability; east of WEA I is most viable.



Recommended Final Wind Energy Areas – J, K, L, & N

- WEA Options A-H removed due to acreage less than 90,000.
- WEA F also removed due to SSA and DOD concerns.
- WEA I not leased in GOMW-1 remains a Final WEA and can be carried forward.
- New data was solicited & reviewed; NCCOS Model finalized May 2022 is still considered best available data for deconflicting.
- Adjustments from draft to Final WEAs include removing whole or partial blocks within 2nm of fairways (USCG).



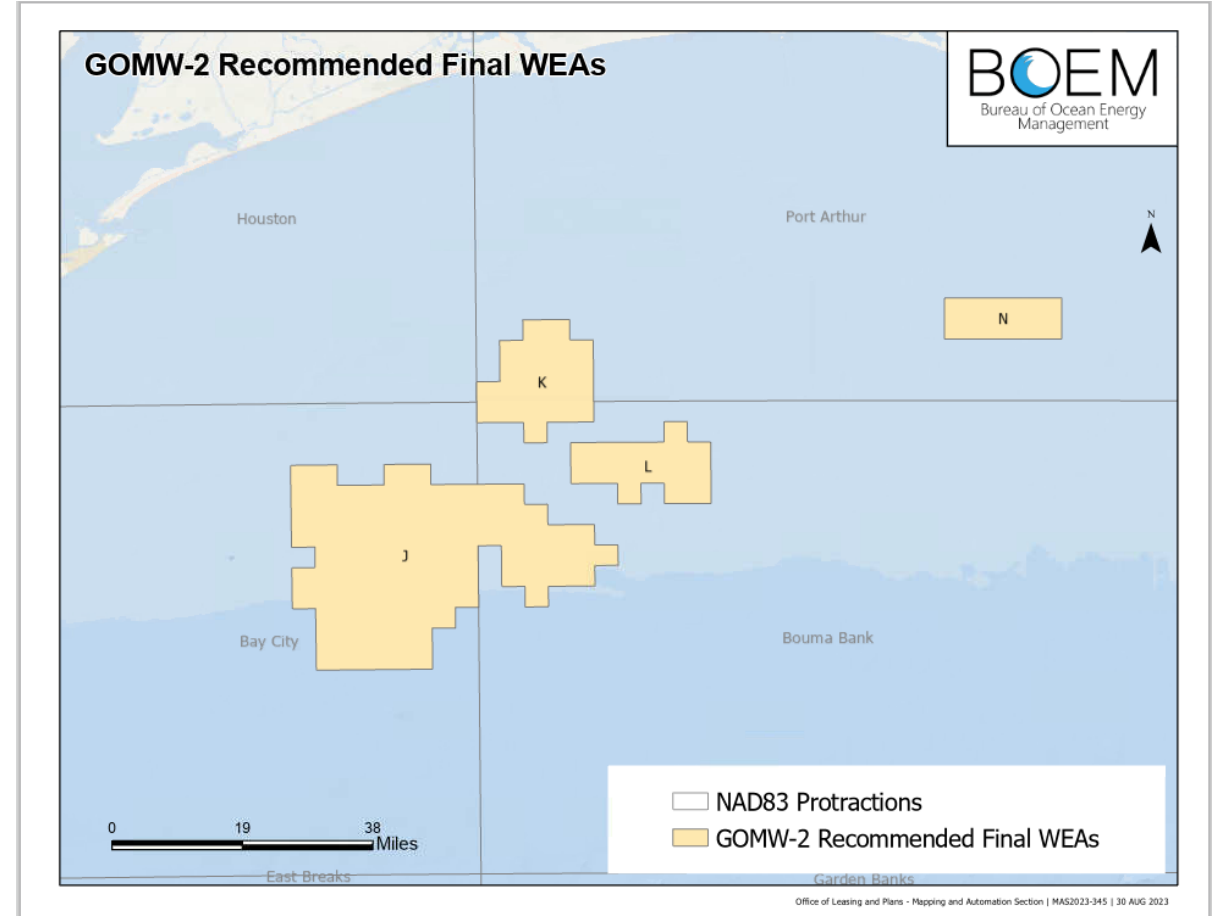
Recommended Final Wind Energy Areas

1. Option J : 495,567 acres
2. Option K : 119,635 acres
3. Option L : 91,157 acres
4. Option N : 56,978 acres*

Rationale for Final WEA Recommendations:

- Less than 10% Moderate-High Shrimping
- Areas are $\geq 90,000$ acres considering industry's request of $\geq 100,000$ acres
- Industry interest is to the east of Option I

**WEA Option N remains due to interest from the State of Louisiana*



BOEM

Bureau of Ocean Energy
Management

BOEM.gov



Renee Bigner – renee.bigner@boem.gov - (504)736-7623