



Section 102 Joint Council Workgroup: Review of Carryover and Phase-in Strategies

September 10, 2020

National Standard 1 Workgroup

- Comprised of NOAA OST, SEFSC, Council Staff, SERO, Atlantic HMS
- Developed technical memo to guide Councils on carryover and phase-in
- Memo published July 2020



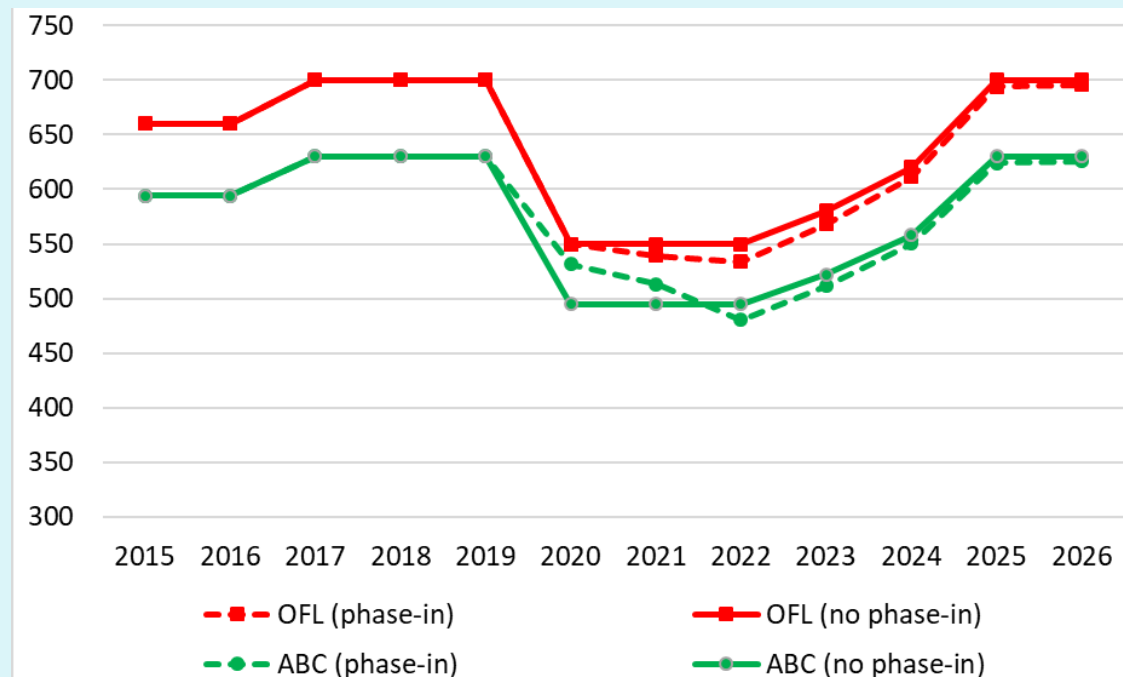
What is Carryover?

- Moving some percentage of foregone yield from the past fishing year to the next
 - Results in one-year increase to ABC
 - Next year's OFL is unchanged; cannot be exceeded
 - Can be limited by various factors
 - Buffer rules
 - Species exclusions
 - Environmental considerations
 - Must continue to prevent overfishing



What is Phase-in?

- Allows incremental changes in catch limits
 - Phase-in period should not exceed three years
 - Reduces socioeconomic effects of large changes
 - Must still prevent overfishing



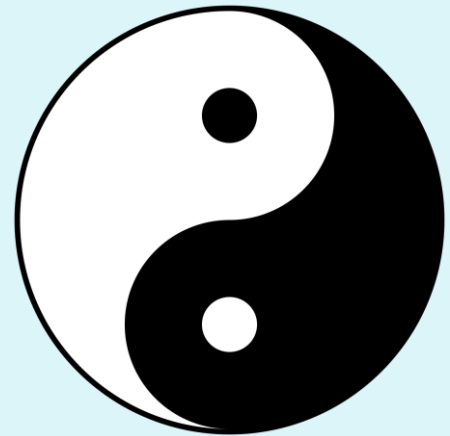
Best Practices

- Carryover and phase-in are great tools when properly applied
- Can be carried out without causing biological harm
- Can be used to increase opportunity, or to soften negative effects



Best Practices

- If carryover is the “yin”, then payback provisions are the “yang”
 - Cannot allow carryover, but then not address quota overages
 - Overages must be paid back, or the stock will deplete faster than forecasted
 - This is key to preventing overfishing in the long run



Best Practices

- Phase-in can be applied to soften effects of quota reduction
 - Needs to be completed within three years
 - Reduction needed for a reason
 - Overfishing, episodic event, etc
 - Taking too long to phase-in reduction can create negative effects not forecasted by model
 - Save some now, pay it back later



Generic Carryover Amendment

- Can be useful when properly applied
 - Avoid compounding quotas
 - Measure original ACL, not carryover-adjusted ACL
 - Avoid overfished species
 - Don't exceed ACL
 - Can't exceed OFL
- Can be carried out without harming stock
- Can be used to increase opportunity, or to soften negative effects
 - Apply to smallest divisible unit of effort



Questions?

