

GAG GROUPER EASTERN GULF OF MEXICO BOTTOM LONGLINE DATA

September 2016 - December 2022

Prepared for:

Gulf of Mexico Fishery
Management Council
Data Collection AP
Panel Meeting

Tampa, FL

February 13, 2023

Center for Fisheries Electronic Monitoring at Mote (CFEMM)

1600 Ken Thompson Parkway
Sarasota, FL 34236

[MOTE.ORG/CFEMM](https://mote.org/cfemm)

[MOTE.ORG/CFEMMHOMEPOR](https://mote.org/cfemmhometport)

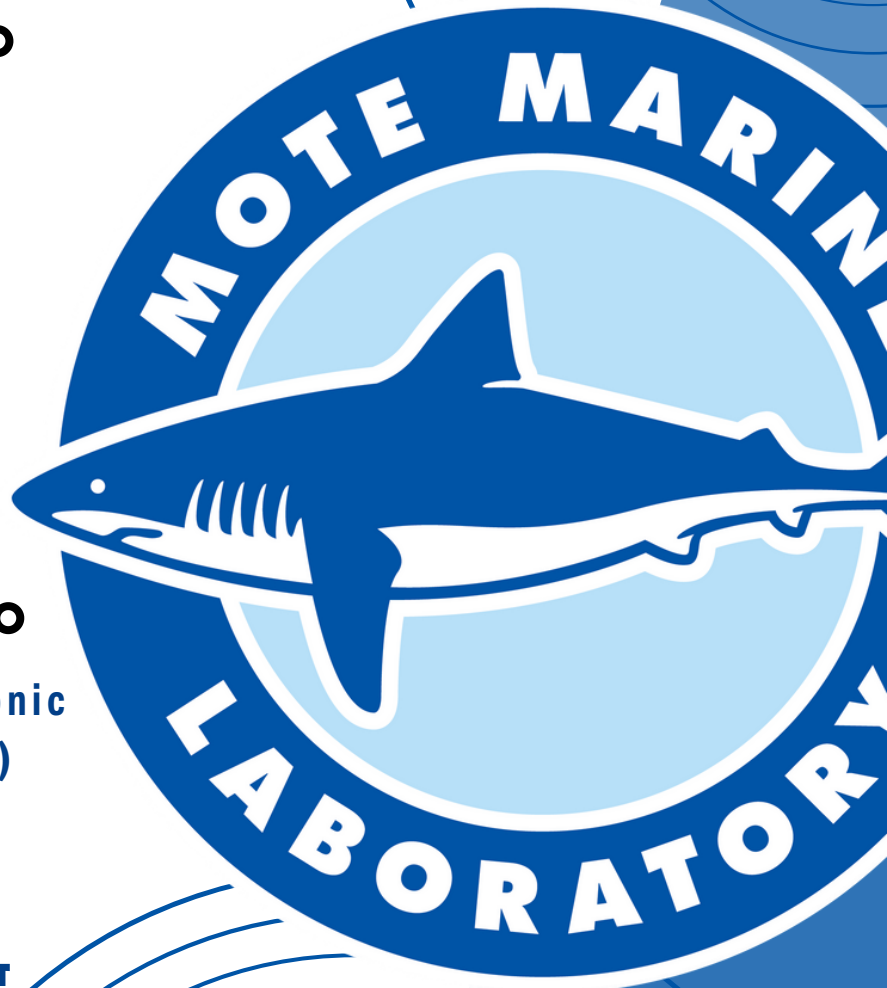


TABLE OF CONTENTS

Tables	Page No.
1. Condition of gag grouper on arrival by year	3
2. Condition of gag grouper on arrival (percentages)	3
3. Fate of gag grouper on arrival by year	3
4. Fate of gag grouper on arrival (percentages)	3

Figures	
1. Gag grouper catch per unit effort	4
2. Gag grouper fate proportioned overlaying mean CPUE of set hauls within each spatial grid	5
3. Gag grouper CPUE during spawning season, January-April, 2021	6
4. Gag grouper CPUE during spawning season, January-April, 2022	7

About CFEMM	
CFEMM Home Port	8

Funding Support	
CFEMM Funding Support	9

TABLES

Table 1. Condition of gag grouper on arrival by year.

Condition On Arrival	2016	2017	2018	2019	2020	2021	2022	Total
Dead on Arrival - Damaged	1	0	1	0	0	2	0	4
Dead on Arrival - Undamaged	0	1	0	0	1	0	0	2
Live - Damaged	0	0	0	0	0	0	1	1
Live - Healthy	167	120	118	62	53	212	143	875
Live - Stomach and/or Eyes Protruding	42	22	84	33	16	73	32	302
Total	210	143	203	95	70	287	176	1184

Table 2. Condition of gag grouper on arrival (percentages).

Condition On Arrival	% of Gag Grouper
Dead on Arrival - Damaged	0.34
Dead on Arrival - Undamaged	0.17
Live - Damaged	0.08
Live - Healthy	73.90
Live - Stomach and/or Eyes Protruding	25.51

Table 3. Fate of gag grouper on arrival by year.

Catch Fate	2016	2017	2018	2019	2020	2021	2022	Total
Discarded - Dead	1	1	1	1	0	1	1	6
Discarded - Live and Damaged (Not Vented)	0	0	0	1	0	0	0	1
Discarded - Live and Healthy (Not Vented)	1	0	1	2	4	1	2	11
Discarded - Live and Healthy (Vented)	6	1	0	3	2	4	9	25
Retained	202	141	201	88	63	281	164	1140
Unknown Fate	0	0	0	0	1	0	0	1
Total	210	143	203	95	70	287	176	1184

Table 4. Fate of gag grouper on arrival (percentages).

Catch Fate	% of Gag Grouper
Discarded - Dead	0.51
Discarded - Live and Damaged (Not Vented)	0.08
Discarded - Live and Healthy (Not Vented)	0.93
Discarded - Live and Healthy (Vented)	2.11
Retained	96.28
Unknown Fate	0.08

FIGURES

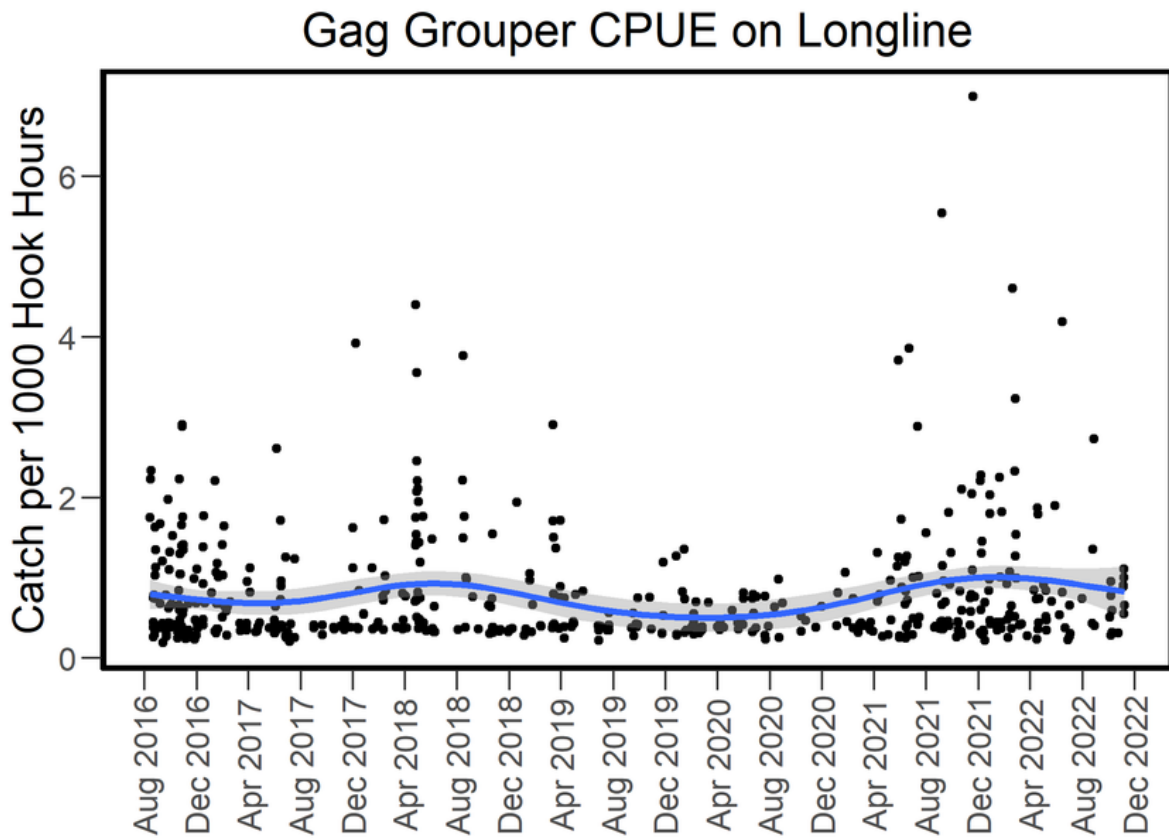


Figure 1. Gag grouper CPUE.

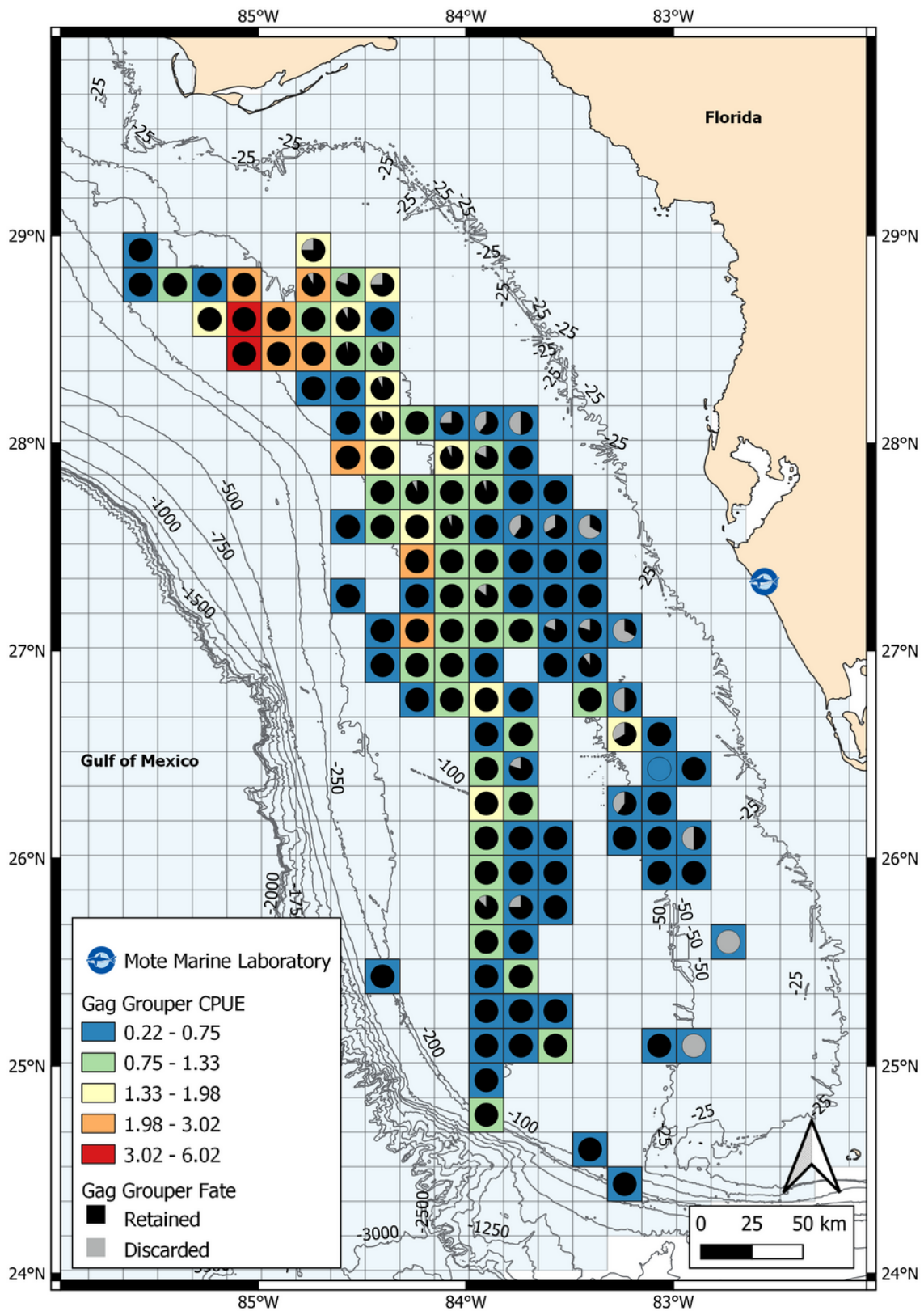


Figure 2. Gag grouper fate proportioned overlaying mean CPUE of set hauls within each spatial grid.

- The highest CPUE areas are located in the northwest sector of the fishing area adjacent to MPA's closed for gag grouper spawning. The shallower areas closer to shore (often targeted for red grouper) yield low CPUE, but a higher propensity to discarded gag grouper.

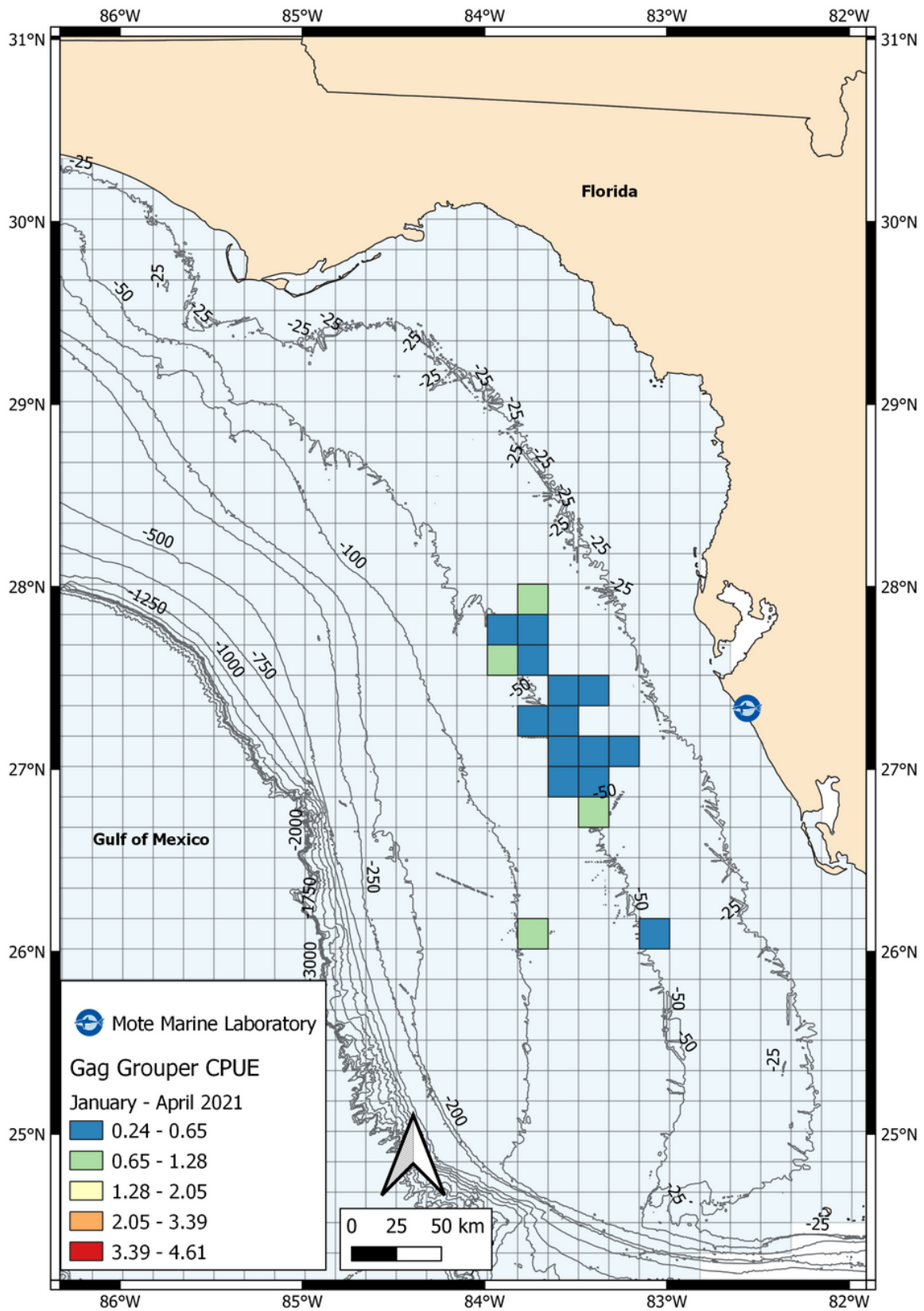


Figure 3. Gag grouper CPUE during the spawning season, January-April, 2021.

- Low CPUE observed during the spawning season (see Figure 1) due to fishing effort being primarily outside the northwest sector.

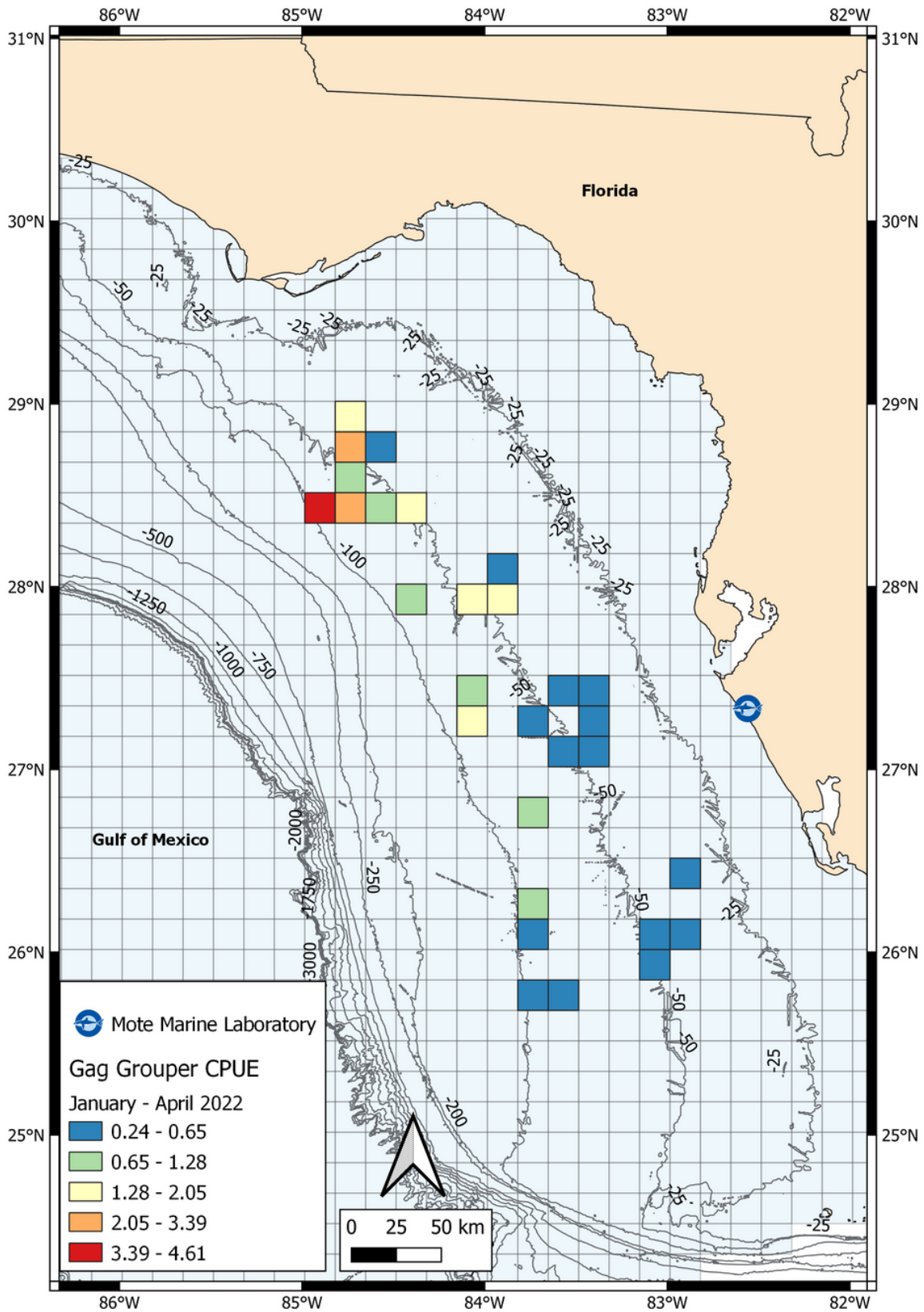


Figure 4. Gag grouper CPUE during the spawning season, January-April, 2022.

- High CPUE events during the spawning season (observed in Figure 1) driven by catch rates adjacent to known aggregation areas.
- These EM derived data suggest spatially explicit management may help support sustainable harvest.

CFEMM HOME PORT

About CFEMM Home Port

CFEMM Home Port is a password-protected website that allows commercial fishers, fisheries managers and marine scientists to exchange knowledge produced through electronic monitoring (EM) of fisheries in the Gulf of Mexico.



How CFEMM Home Port Can Help You

Members of the commercial fishing industry can:

- Download short trip highlight videos recorded from their trips
- Access data products* designed to help you optimize your fishing practices and better understand your patterns (includes maps and tables)
- Fill out surveys
- Communicate with the CFEMM team and find contact information

Fishery Managers can:

- Request data and data products* from CFEMM's participating commercial fishing vessels in the Gulf (2016-2022 available)
- Facilitate discussions on how electronic monitoring can help answer fisheries questions
- Access forms, surveys, and non-disclosure agreements
- Get feedback direct from our participating fishers

*Note: Confidentiality of individual vessel data is of the utmost importance to the CFEMM and is protected through national policy guidance and/or at a CFEMM participants' request.

We Welcome Your Feedback & Requests:
MOTE.ORG/CFEMMHOMEPOR

CFEMM SUPPORT

Environmental Defense Fund

National Fish and Wildlife Foundation Innovation Fund

**National Fish and Wildlife Foundation Electronic Monitoring and
Recording Program**

Net Gains Alliance

NOAA Bycatch Reduction and Engineering Program

NOAA Cooperative Research Program

Ocean Conservancy

Sustainable Fisheries Partnership

Sustainable Ocean Alliance

Sea Pact

