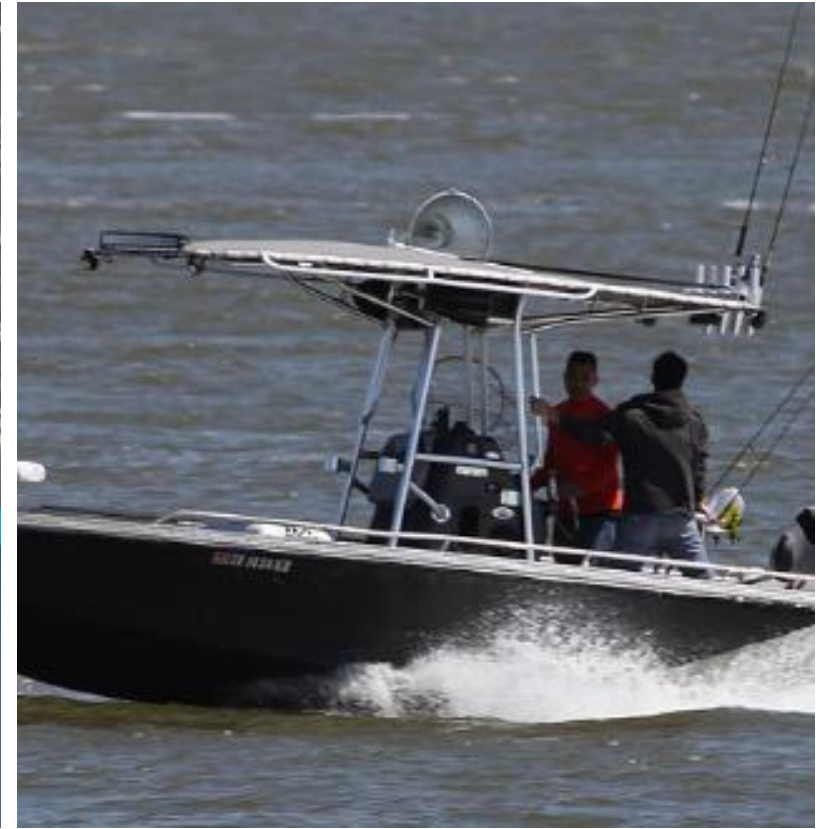
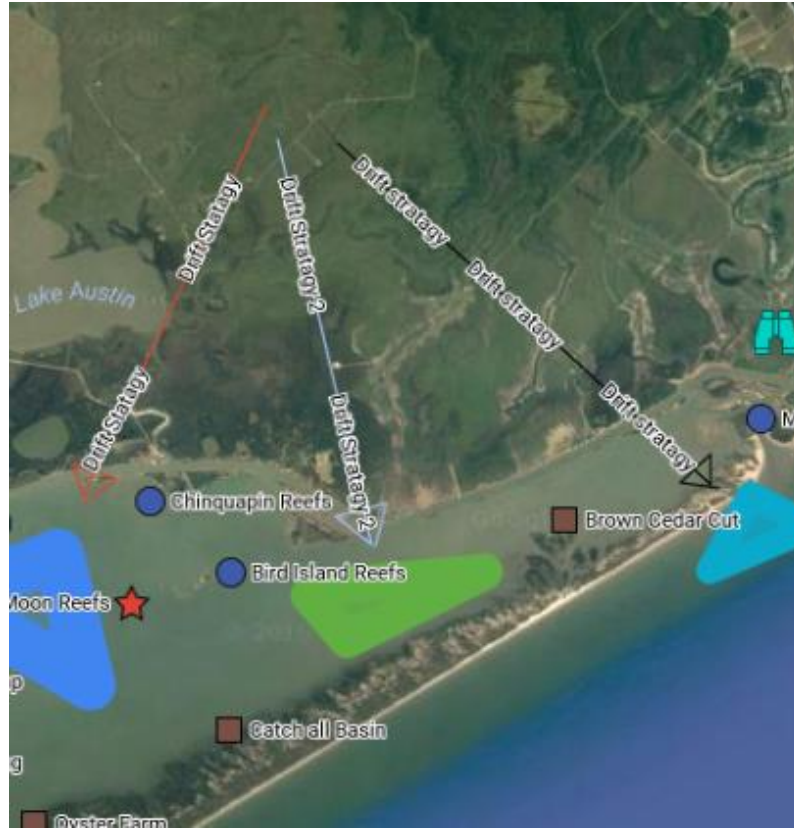


A background map of the Gulf of Mexico. The map shows the coastline of Mexico on the left and the United States on the right. The Gulf of Mexico is labeled in the center. Various geographical features are labeled, including the Yucatan Peninsula, the Gulf of Campeche, and the Gulf of Mexico. The map is overlaid with a grid of latitude and longitude lines. The text 'TPWD LE Division' and 'Gulf Fisheries Enforcement' is overlaid on the map.

A background map of the Gulf of Mexico coastline, specifically showing the Texas and Louisiana borders. The map includes depth soundings, navigational markers, and labels for various coastal features. The text 'TPWD LE Division' and 'Gulf Fisheries Enforcement' is overlaid on the map.



State Effort
Inside 9 miles



Jetty Interceptions

- **Water Safety Inspections** (reason for the stop)
- **License Requirements** (only for the resources in possession)
- **Bag Limit Checks** (for the resources in possession)



Provides a Stable Environment

- Reduced vessel damage
- More thorough inspection
- Allows for more vessel checks
- Cell and Radio Service for verification
- Less Federal Fishing Compliance

Bag Limit Violations

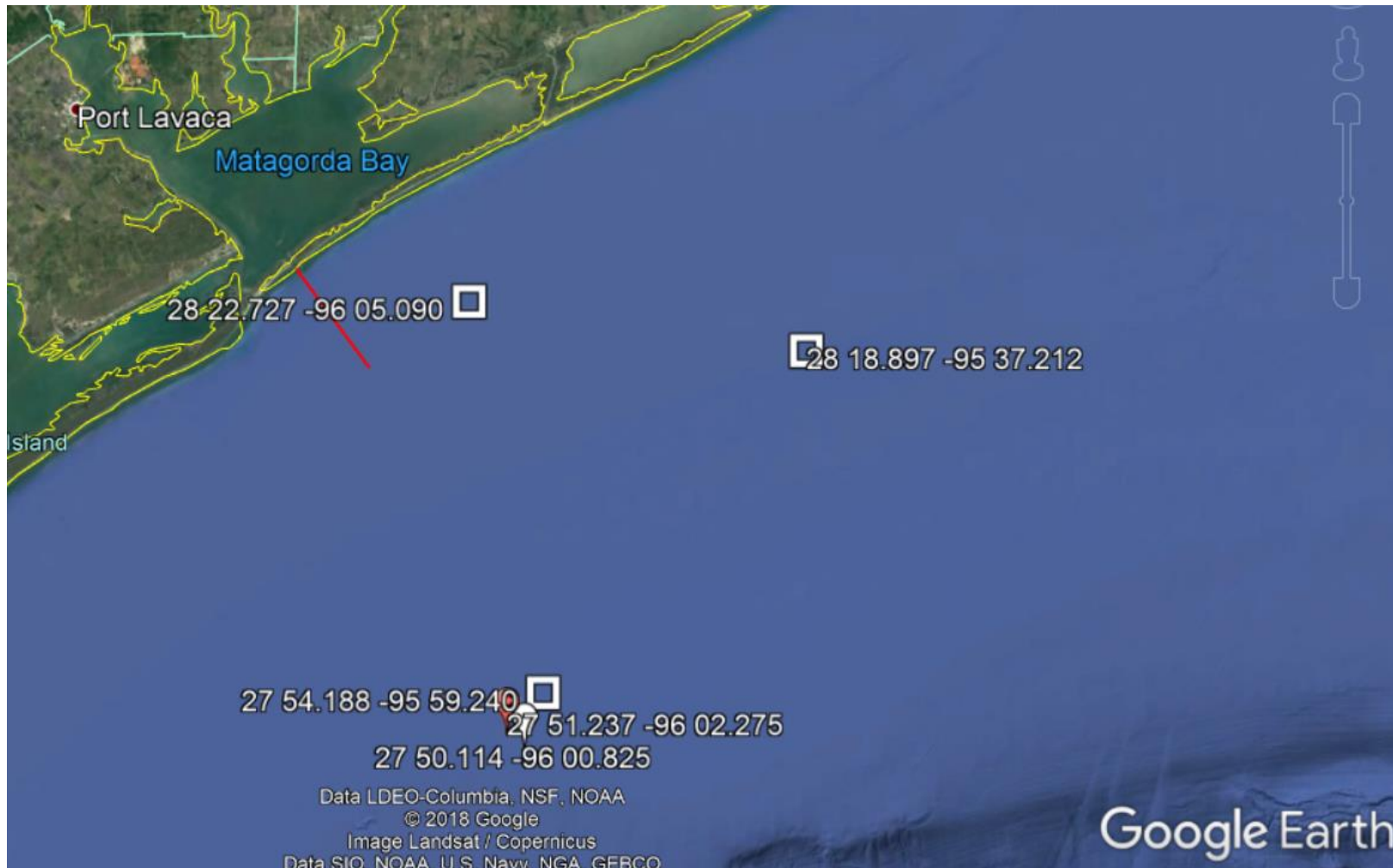
- Bag limits are kept whole in traditional compartments.
- Excess fish are kept in small ice chests in forward compartments.
- The fish fillets represent a sperate violation however the intent of the violator is to bring in excess fish in hopes they are not detected.



Gulf Open Water Inspections

- Allow for species specific checks
- Allow for Equipment use checks
- Typically target Recreational anglers
- Reduced number of checks per patrol
- Higher risk of damage and injury
- Difficult to coordinate with weather, staffing, and recreational desire.
- Very Expensive





Federal Fisheries Violations

- 8 hour patrol resulted in:
- 2 vessel checks
- 1 violation of snapper closure
- Referred to NOAA OLE under the JEA contract



Gulf Enforcement JEA Contract

- Turtle Excluder Device Enforcement
- Reef Fish Enforcement
- Highly Migratory Enforcement
- IFQ enforcement
- IUU Enforcement (At US border crossing only)

Turtle Excluder Device Inspections

- 367 Miles of Coastline
- Inshore and Offshore
- State and Federal prosecution







Texas Parks & Wildlife Law Enforcement Division

Incident Report

4200 Smith School Rd Austin, TX 78744

Phone: (512) 389 - 8400 Fax: (512) 389 - 4800

ORI	County	Venue	Report #
TX2270800	CAMERON	AUSTIN	19-MTOG-8177491
Report Date / Time	Occurrence Date / Time	File Class	
09/04/2019 12:38 Hrs	08/16/2019 14:15 Hrs	1714	

NOT FOR PUBLIC RELEASE

ent	Supplements
	Pending Approval (1)

ision of Red Snapper during the Closure in Federal Waters

Incident Location

ess	City	State	ZIP	Country
ne Gulf Of Mexico	South Padre Island	Texas	78597	United States of America
ounty:	Township of Occurrence	Clery Location		
Latitude	Longitude	Beat	Sub-Beat	

- Closed Season Effort
- Bag Limit Effort
- Locate
- Prove Venue
- Send Report for Federal Prosecution

Reef Fish Enforcement

Reef Fish Inspections

- Target the Recreational Fishing Fleet
- Recreational Allocation
- Mexican Fishing Lancha Interdiction is not addressed
- Mexico Lancha Fishing allocation

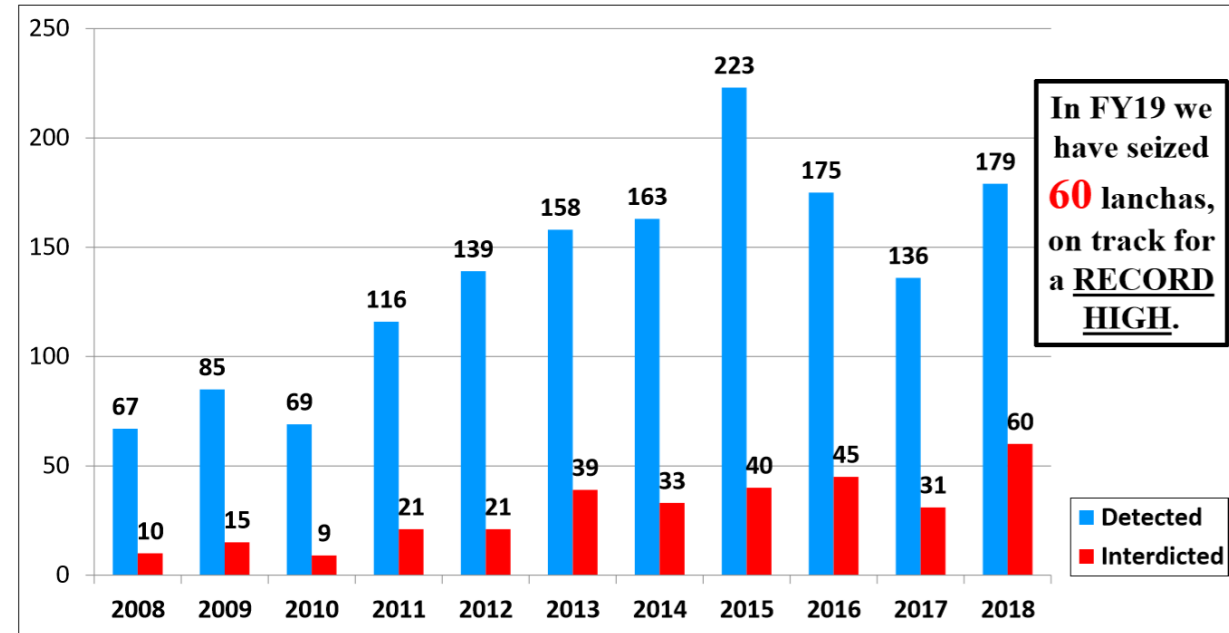


Mexico Fishing Fleet
from Playa Bagdad



Lancha Detections vs Seizures: FY 2008-2018

60 lanchas seized in FY 2018....a record year!



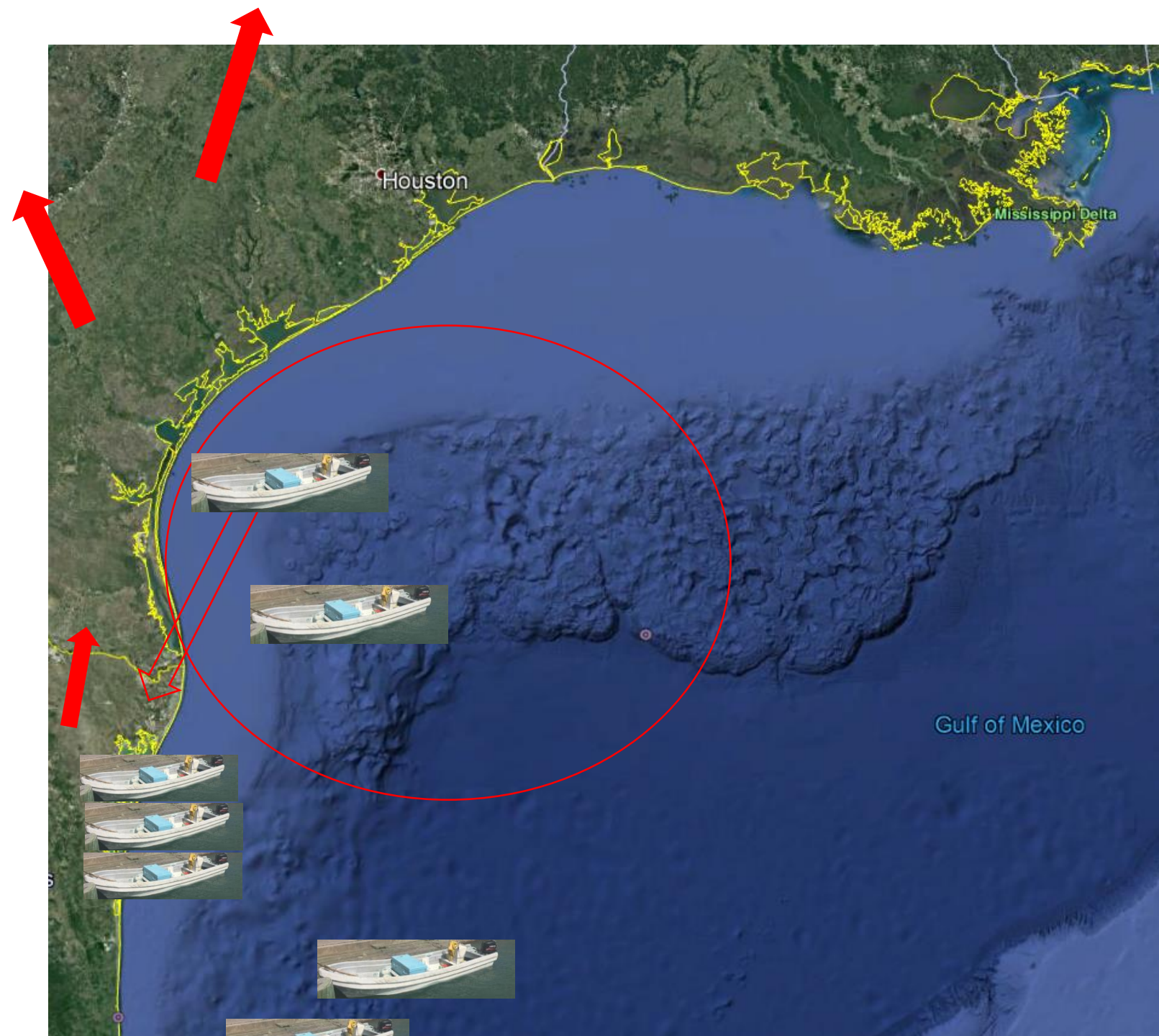
60 x 800lbs = 48,000 lbs of snapper

179 x 800lbs = 143,200 lbs removed

Texas Recreational Allocation= 241,245 pounds

The true volume may exceed the total gulf allocation

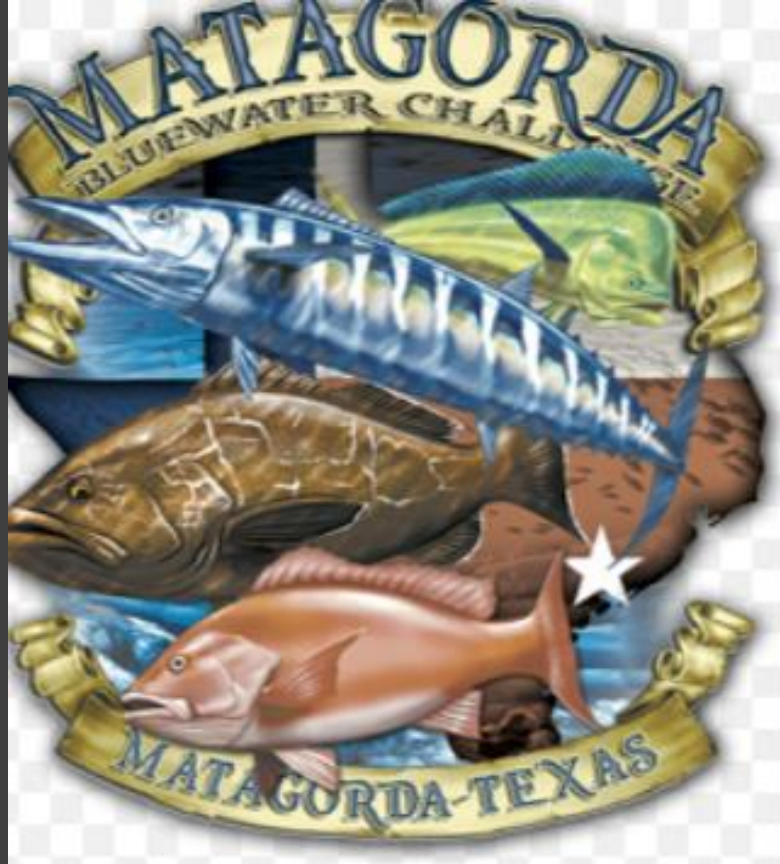
Millions of # illegally caught in the US EEZ and imported back into the US





Highly Migratory Species

- 2018 Contract focused the States effort on Federal Waters and dockside inspections.



HMS Species 2 Significant Impacts





IFQ Dockside Inspections

- Efforts to control under reporting of Commercial Harvest of :
 - Red Snapper
 - Grouper
 - Tilefish

IUU Inspections at International Border



Verifying the load

- Requires the truck to be completely unloaded then reloaded.



IUU Circle

- Supports the effort to hold countries in compliance with international harvest plans and reporting.
- Verify the load is true at importation
- Verify the Dealer bought what is advertised for sale.



Invoice Date: 10/2/91		Time: 3:09 PM	Account Number: 3689	Customer Type: Retail	
Qty	Common Name	Scientific Name	Each	Amount	
6	Featherduster: Hawaiian Size: Large	Sabellastarte sp. Origin: Hawaii	\$10.00	\$60.00	
-2	Featherduster: Hawaiian Size: Large	Sabellastarte sp. Origin: Hawaii	\$10.00	\$-20.00	
20	Shell: Turbo Grazer® Size: Medium	Turbo fluctuosus Origin: Mexico	\$3.00	\$60.00	
1	Box Charge		\$8.75	\$8.75	
	Freight Charge			\$29.00	
	COD and/or Saturday Charges			\$4.00	
	Declared Value/Ins. Charge			\$2.00	
Note: (V) indicates venomous, handle with care!!! * Philippine fish guaranteed undrugged by supplier. If you have questions about your purchase please call Coral Solutions at the number at the top of this page.			Subtotal	\$143.75	
			Sales Tax	---	
			Total Due	\$143.75	



Questions