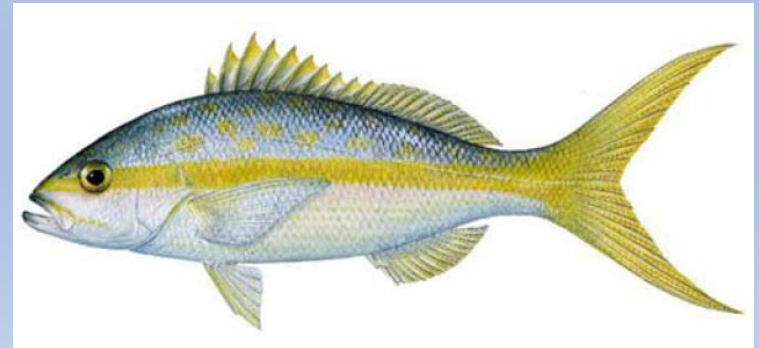


Gulf of Mexico and South Atlantic Yellowtail Stock Assessment

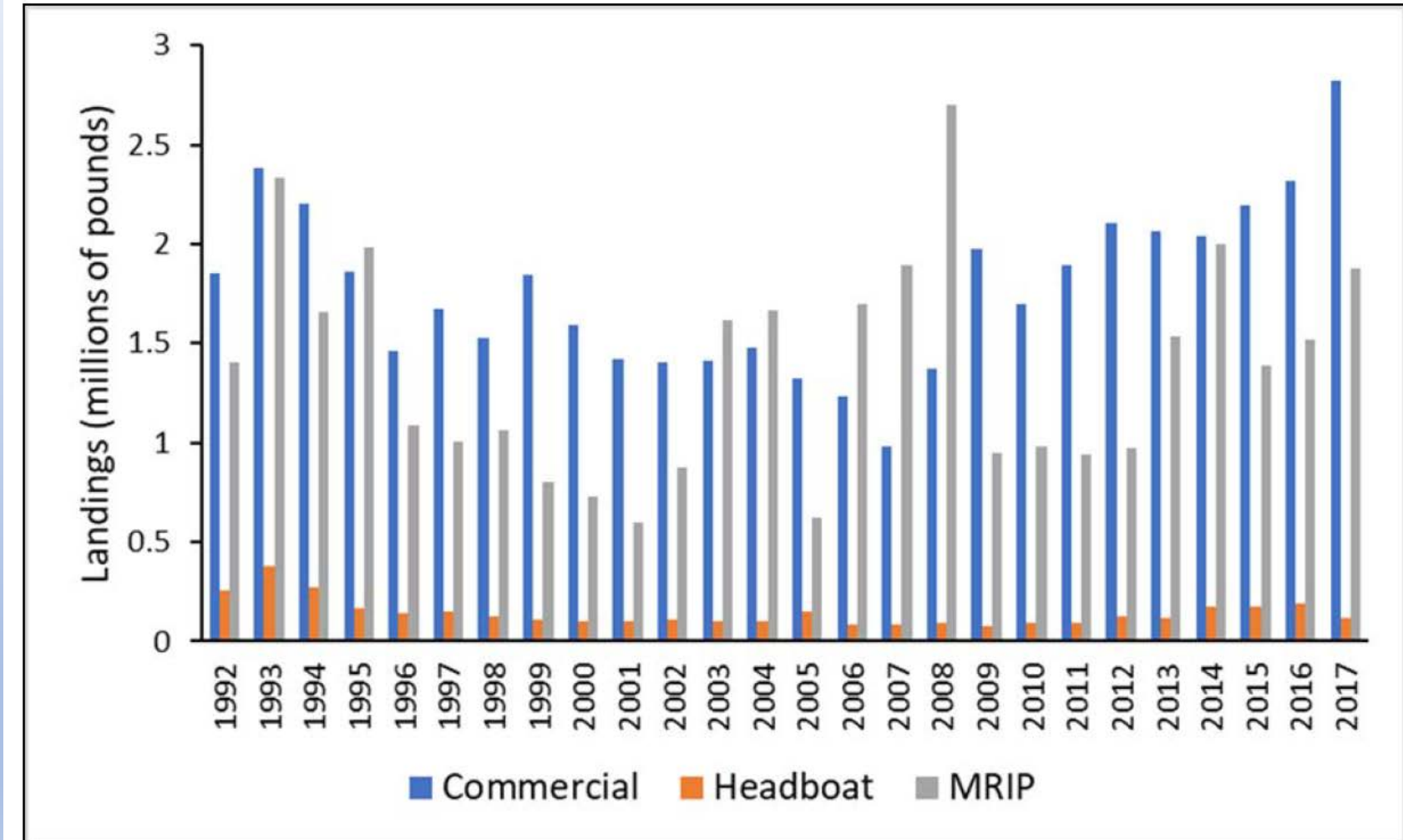
SSC's Summary Presentation
to

Gulf of Mexico Fishery Management Council

January, 2021



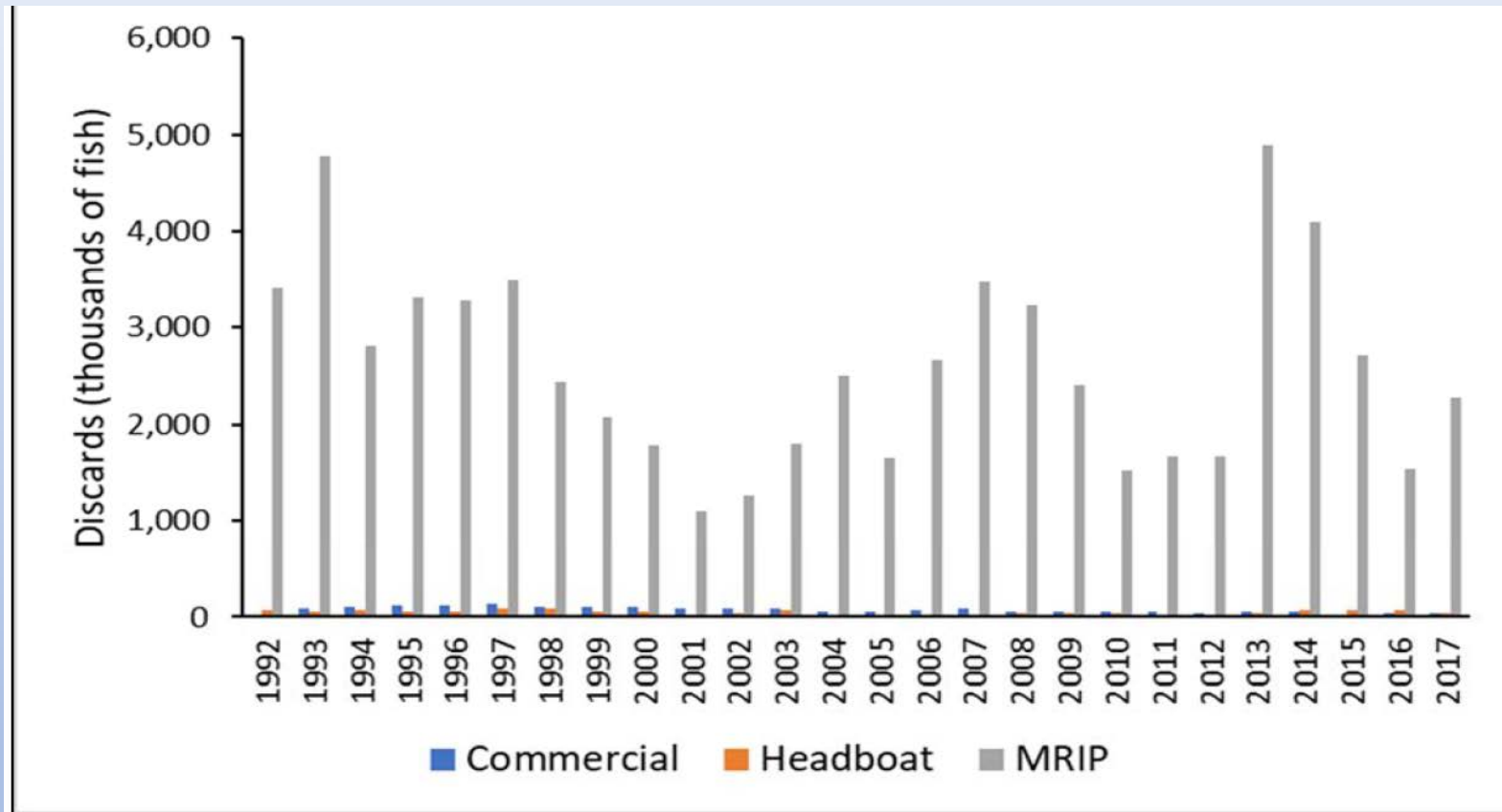
Gulf of Mexico and South Atlantic Yellowtail - Landings



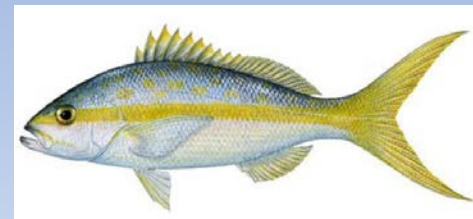
January, 2021



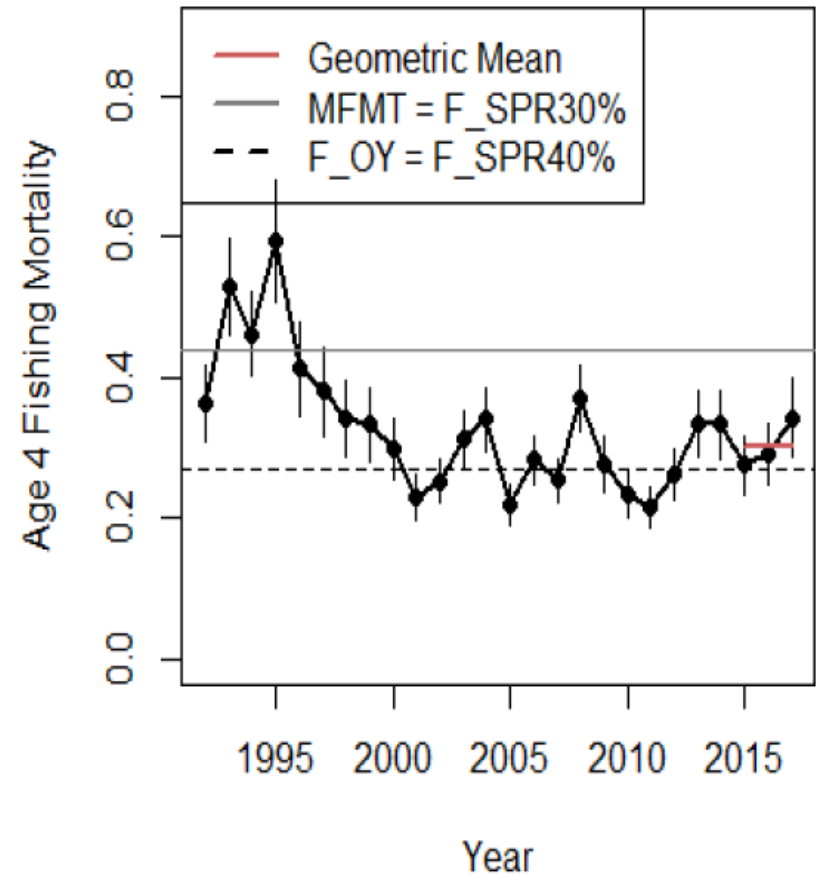
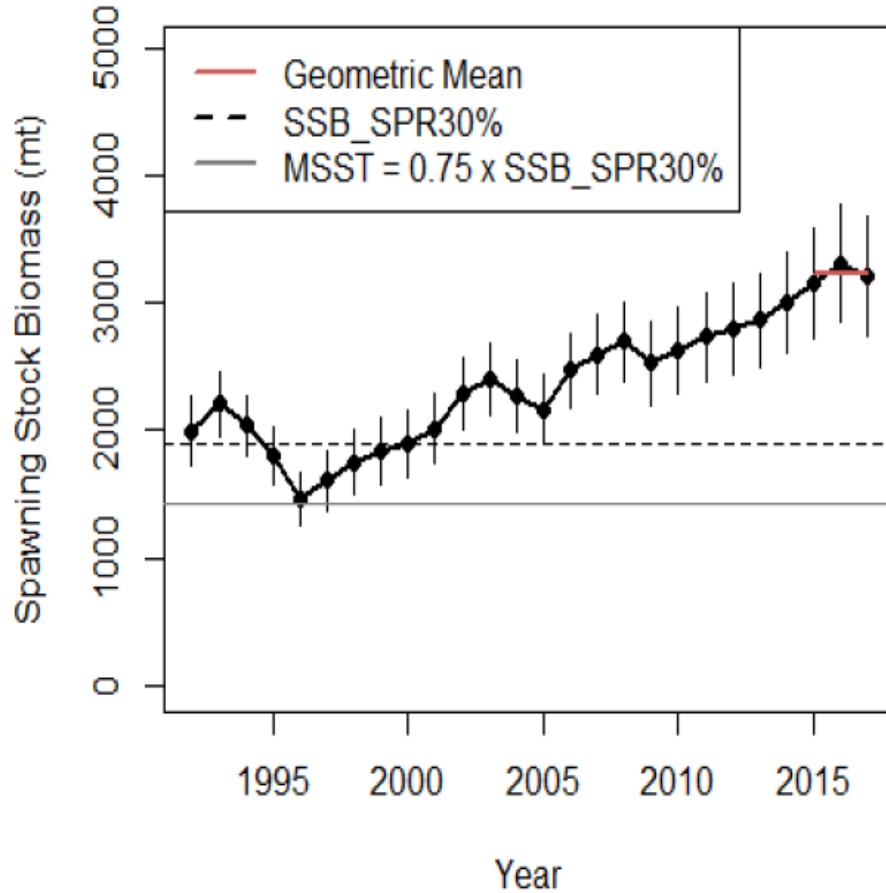
Gulf of Mexico and South Atlantic Yellowtail Discards



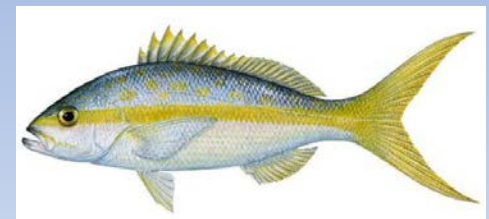
January, 2021



Gulf of Mexico and South Atlantic Yellowtail

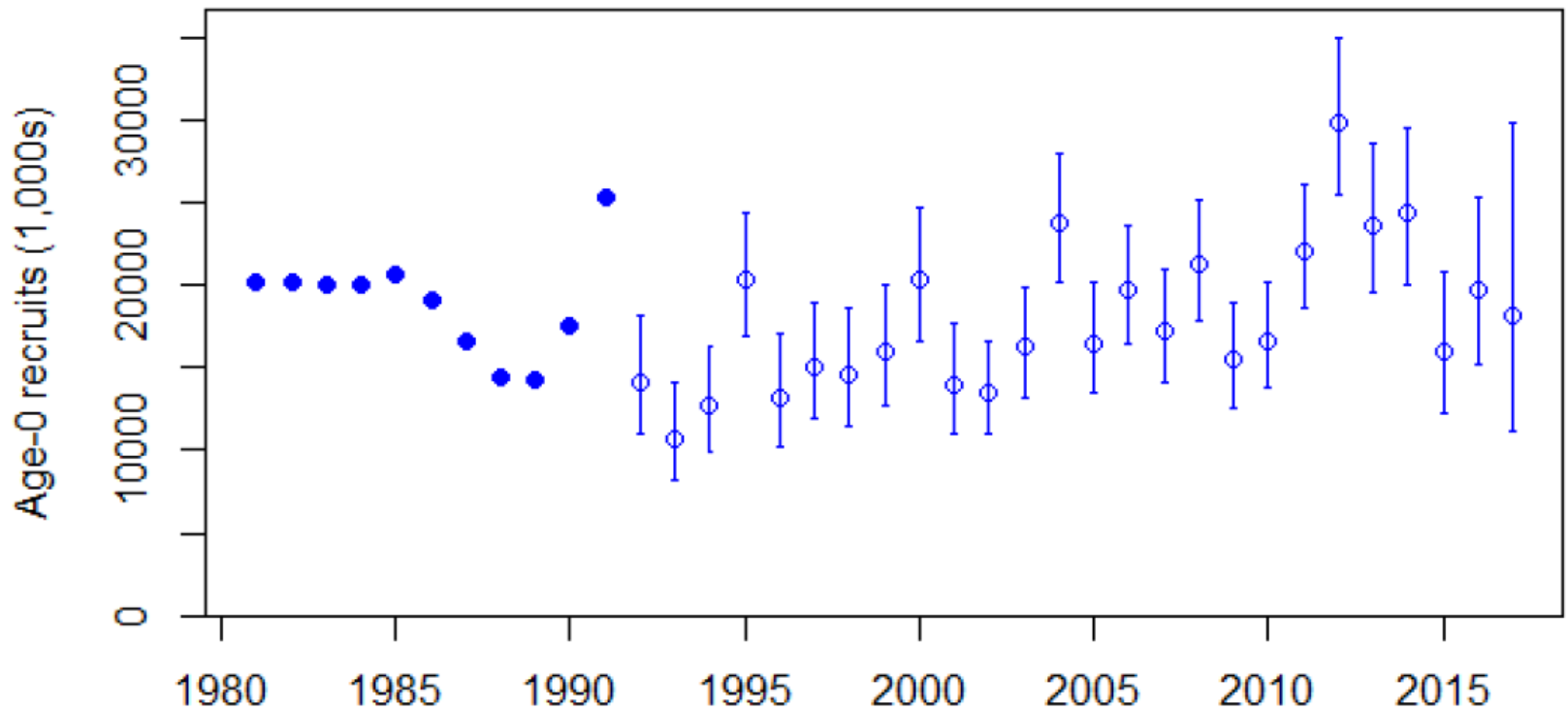


January, 2021



Gulf of Mexico and South Atlantic Yellowtail - Recruits

Age-0 recruits (1,000s) with ~95% asymptotic intervals



January, 2021



Gulf of Mexico and South Atlantic Yellowtail

Table 1: Summary of MSRA benchmarks and reference points for SEDAR 64. F is the age-4 instantaneous fishing mortality rate.

Reference Point Criteria		Current Benchmarks	
Base M	0.223	SSB _{Current} (Geometric mean: 2015-2017)	3,223 mt
Steepness	0.808	F _{Current} (Geometric mean: 2015-2017)	0.295
SSB ₀ (Unfished)	7,446 mt	SSB _{Current} / SSB _{SPR30%}	1.69
SSB _{MSY-proxy} = SSB _{SPR30%}	1,904 mt	SSB _{Current} / MSST	2.26
MSST=0.75*SSB _{SPR30%}	1,428 mt	--MSST Overfished?	No
F _{MSY}	Not Estimable	F _{Current} / MFMT	0.67
MFMT = F _{SPR30%}	0.438	--Overfishing?	No
F _{SPR40%}	0.271		
Yield @ F _{SPR40%}	1,497 mt		

January, 2021



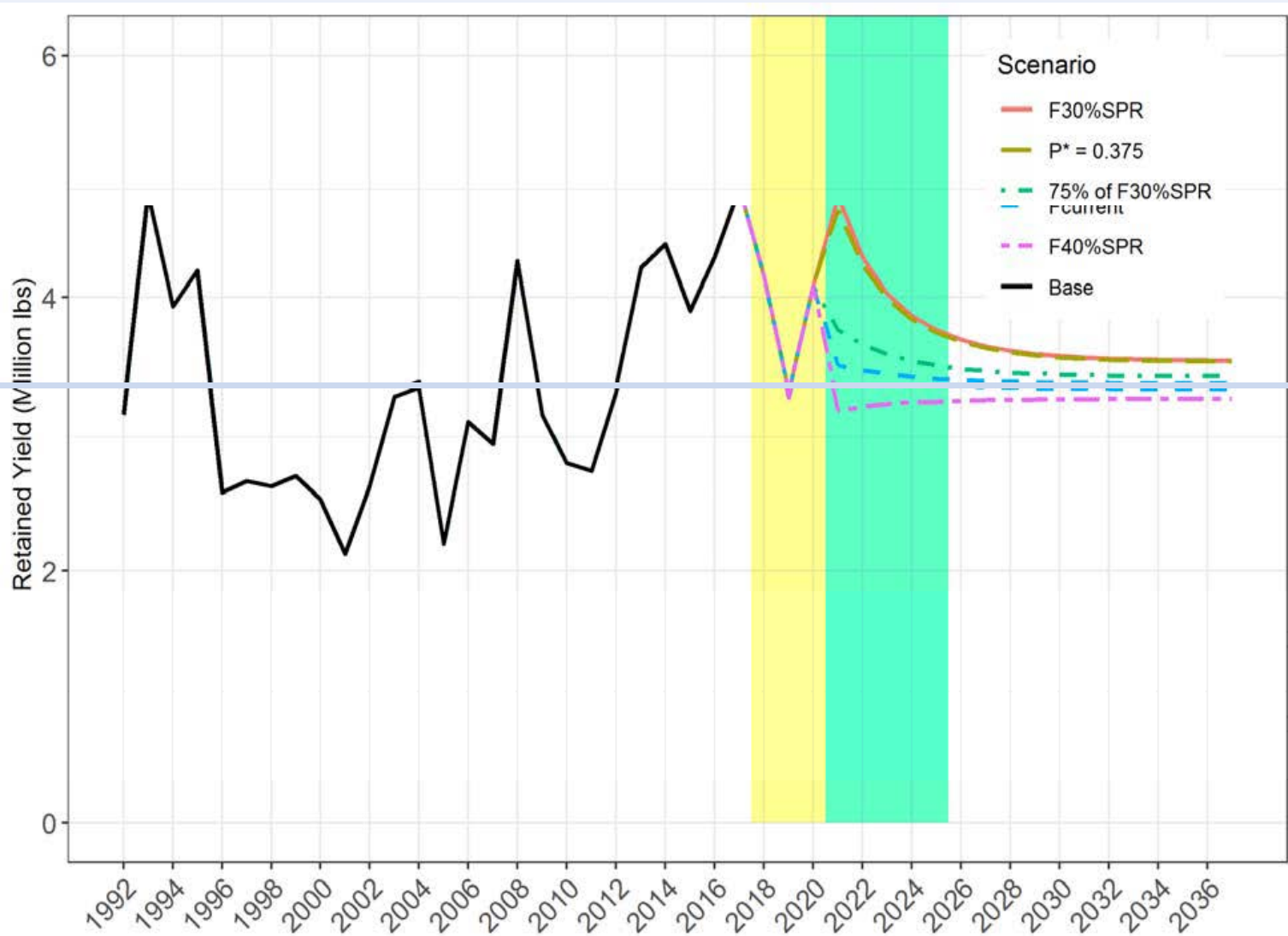
Gulf of Mexico and South Atlantic Yellowtail

- ***The SSCs recommend using the calculated P^* value of 37.5% to produce the ABC for 2021-2025, and recommend that the Council consider adjusting the ACL or ACT for management uncertainty (e.g., 75% $F_{30\%SPR}$).***
 - ***The SSCs requested projections used in ABC calculations be rerun based on average landings from 2017-2019.***

January, 2021



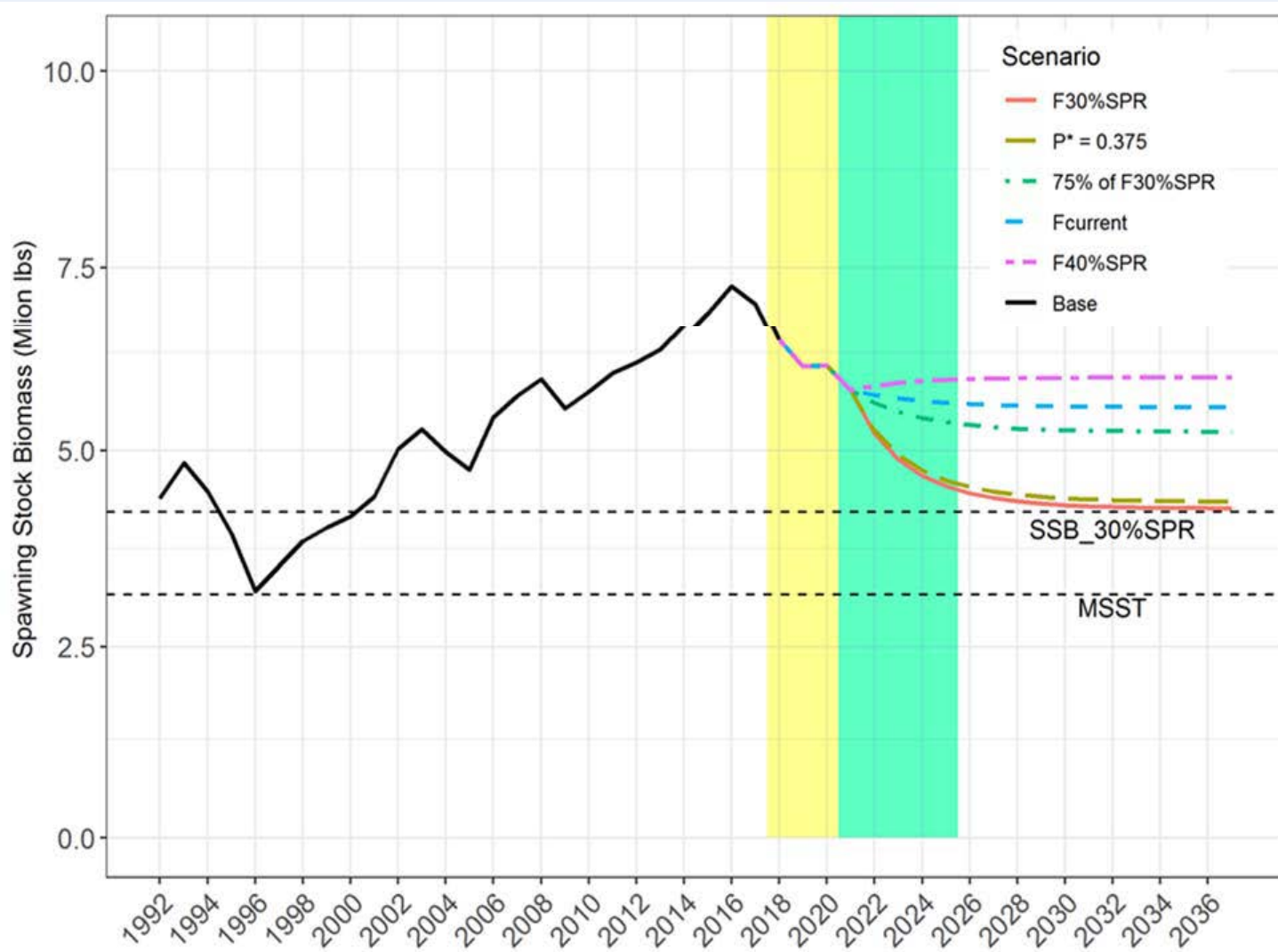
Gulf of Mexico and South Atlantic Yellowtail



January, 2021



Gulf of Mexico and South Atlantic Yellowtail



January, 2021

