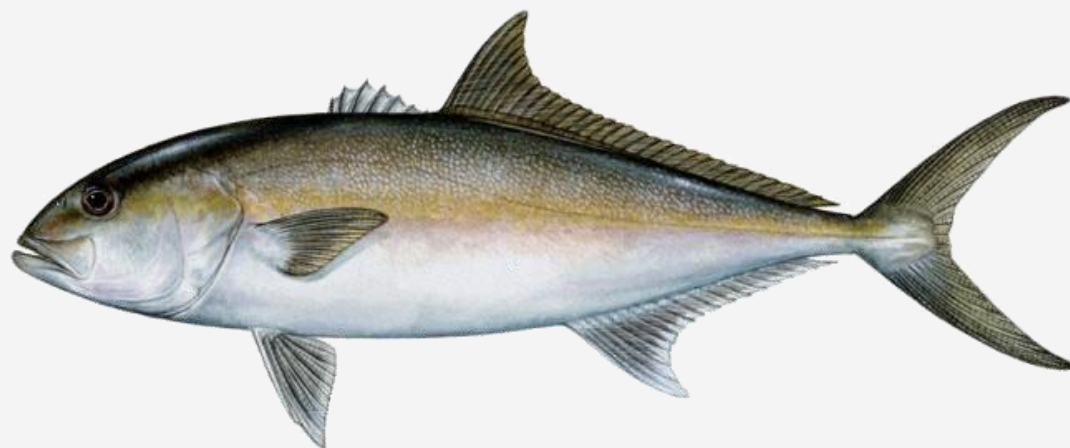


Greater Amberjack

Options to modify recreational and commercial management measures



January 30, 2018

New Orleans, LA



Recent Management Activity

August 2017: Modifications to allowable harvest and rebuilding plan

- Revised ACLs and ACTs
- Selected July 1 – December 31 recreational season
- Effective date: January 27, 2018

October 2017: Modifications to fishing year and recreational season

- Fishing year: August 1 – July 31
- Selected May; August – October recreational season

Greater amberjack

Potential management changes

- Recreational: Fractional bag limits
- Recreational: Split quotas
- Commercial: Modify fishing year
- Commercial: Modify trip limit

Recreational Fractional Bag Limits

What are fractional bag limits?

- Recreational bag limits < 1 per person to reduce the harvest rate and extend the recreational fishing season

Is this new?

- The Council previously considered fractional bag limits (Amendment 30B)

Could the fishing season be extended with fractional bag limits?

Mode	Landings (lbs ww)	Percent
Charter	1,622,709	36.4%
Private	2,637,339	59.1%
Headboat	125,158	2.8%
Shore	74,952	1.7%
Total	4,460,158	100%

Draft Options	Percent Reduction
1 Fish per Person	0%
1 Fish per 2 People	38%
1 Fish per 3 People	42%
1 Fish per 4 People	54%
1 Fish per 5 People	59%

Data source: TPWD, LA Creel, MRIP, and Headboat from 2014 to 2016.

Recreational split quotas

Why consider split quotas?

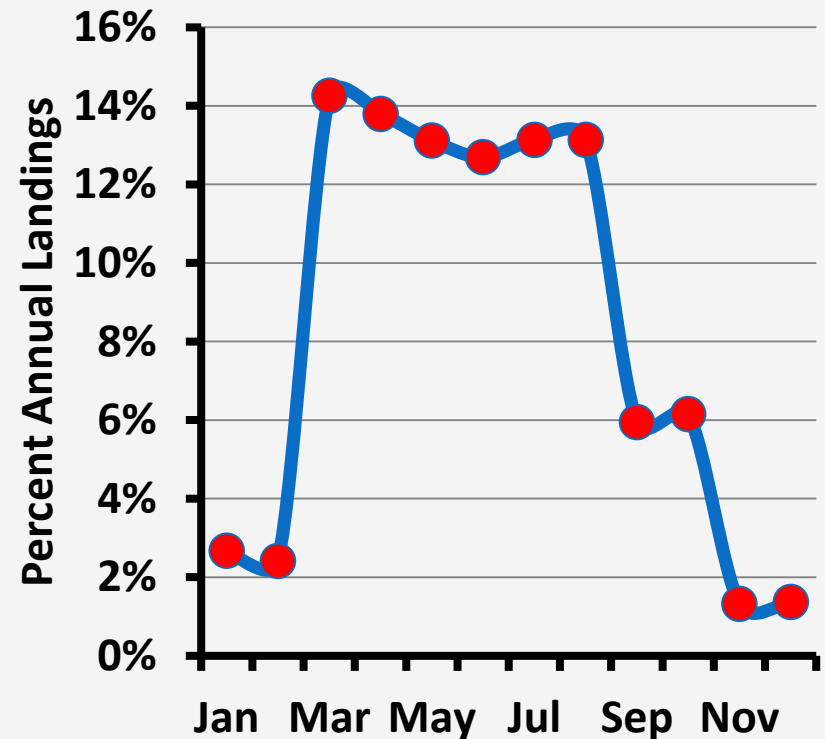
- NMFS must close the recreational fishery when the ACT is expected to be met
- Early season closures have occurred 2014-2017
- Split season may allow greater gulf-wide access
- A split quota would reduce likelihood that an overage in the fall season would prevent re-opening for the spring season in the following calendar year

Recreational split quotas

Split quota

- Would use projected landings to calculate fall & spring seasons
- August – October ~ 61% of quota based on the decision tool
- Draft options:
 - 60/40 (fall/spring)
 - 70/30 (fall/spring)

Gulf Recreational Greater Amberjack Landings by Month



Recreational split quotas

Option	Fall season	Close date	Spring season	Close date	Landings (% ACT)
No split quota	Aug 1 – Oct 31	None	May 1 – May 30	None	838,548 (93%)
60/40 (Fall/Spring)	Aug 1 – Oct 31	Oct-28	May 1 – May 30	None	825,425 (91 %)
70/30 (Fall/Spring)	Aug 1 – Oct 31	None	May 1 – May 30	May-29	820,048 (91%)

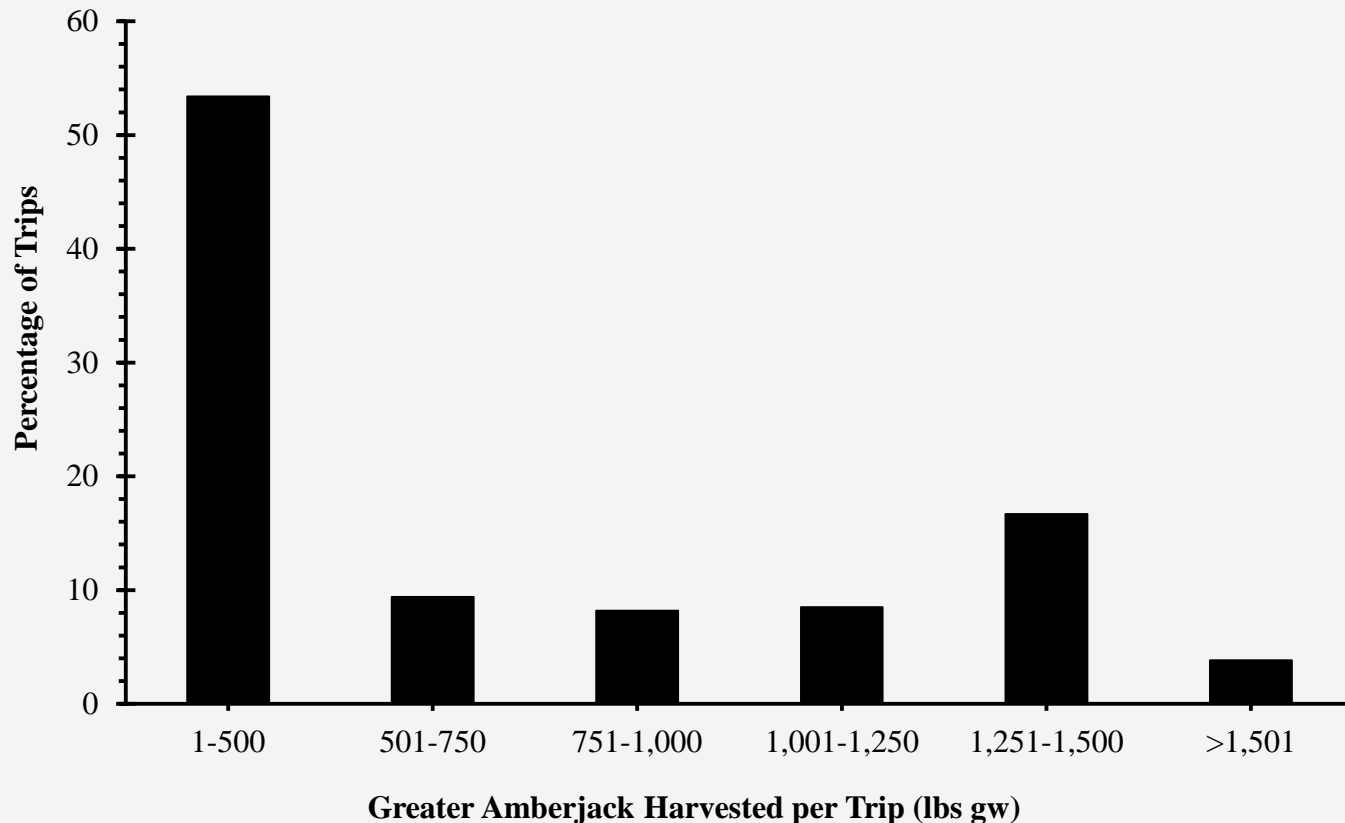
* No closures would be expected for 2019-2020 + fishing years based on current harvest rates

Commercial trip limits

- < 2013: No commercial trip limits
- 2013: 2,000 lbs ww (1,923 lbs gw) trip limit
- 2016: 1,500 lbs gw trip limit
- 2018: Should trip limits be further reduced to slow harvest rate?

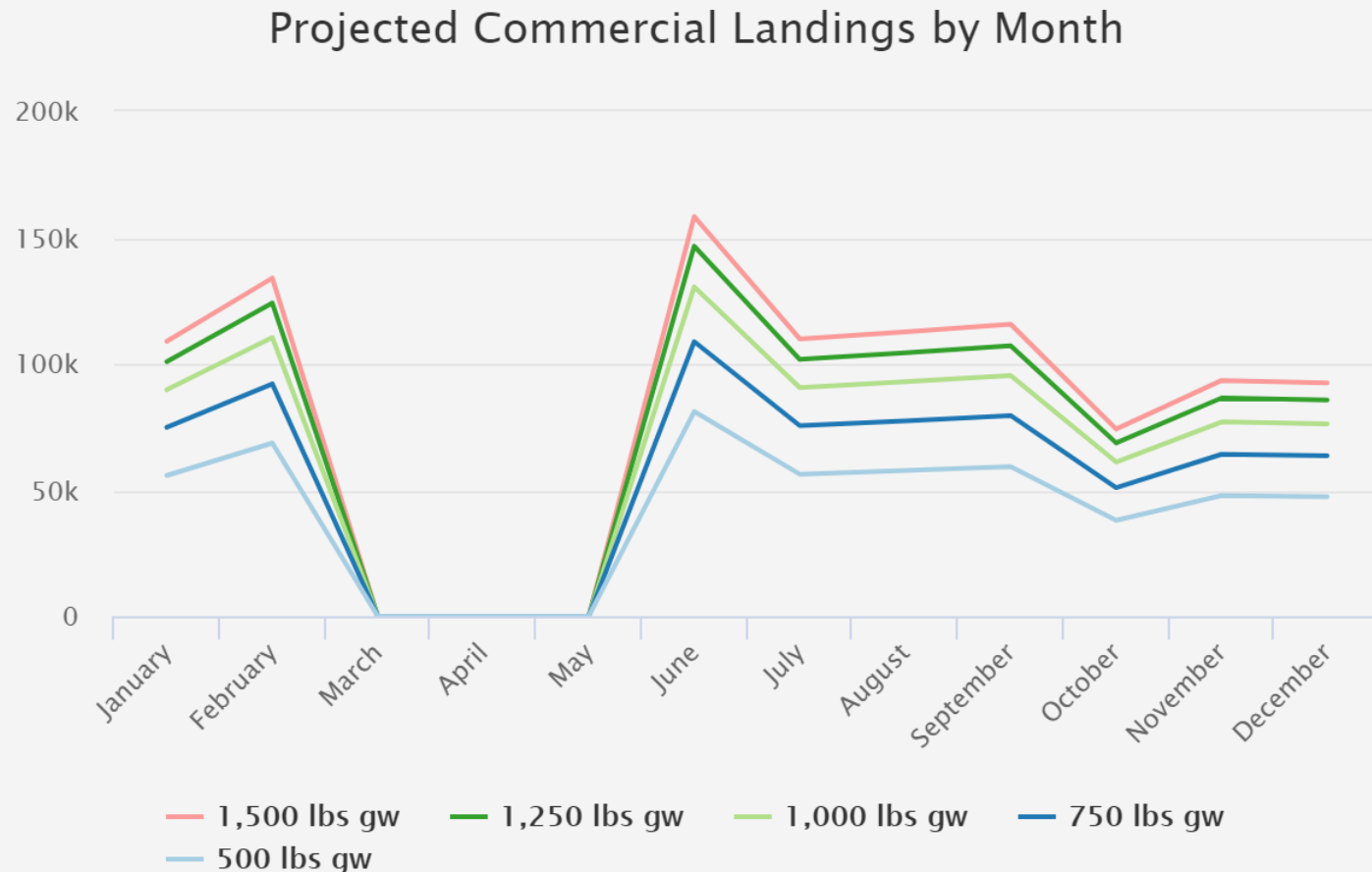
*Commercial sector has closed before year end each year since 2009

Commercial harvest per trip



Distribution of the Gulf of Mexico greater amberjack harvested per trip (lbs gw) for 2016 and 2017 (n=1,307 trips). Data from 2017 is preliminary and not complete.

Monthly landings



Predicted commercial landings for Gulf of Mexico greater amberjack. The landings came from the commercial landings report of SERO-LAPP-2014-09 which was done for the Greater Amberjack Framework Action. The fishery is closed March 1 to May 31.¹⁰

Commercial harvest per trip

Trip Limit (lbs gw)	Landings (lbs gw) (Percent Reduction)
1,500	999,187 (0%)
1,250	925,247 (7.4%)
1,000	823,330 (17.6%)
750	686,441 (31.3%)
500	511,584 (48.8%)

Predicted percent reductions in Gulf of Mexico greater amberjack commercial landings for a range of possible trip limits. Data comes from the commercial logbook dataset for 2016 through 2017, where 2017 data are not complete.

Commercial fishing year

Council selected Aug 1 – Jul 31 as the recreational fishing year

- Commercial fishing year remains Jan 1 – Dec 31
- Mismatched fishing years between sectors could make comparison of total harvest with OFL more difficult
- Consideration of August 1 – July 31 fishing year could extend season length (days) relative to status quo

Commercial fishing year

Draft options: Trip Limit (lbs gw)	Closure Date	Days Open
Status quo: January to December Fishing Year		
500	9-Aug	128
750	1-Jul	89
1,000	18-Jun	76
1,250	11-Jun	69
1,500	7-Jun	65
August to July Fishing Year		
500	16-Jan	168
750	3-Dec	124
1,000	12-Nov	103
1,250	30-Oct	90
1,500	21-Oct	81

Next Steps

- Should staff continue development to address all of these Actions?
- Is the range of options reasonable and appropriate
- Should other Actions or Alternatives be considered?

Questions

John T. Froeschke, Ph.D.
John.Froeschke@gulfcouncil.org

