

Notes on Landings Data

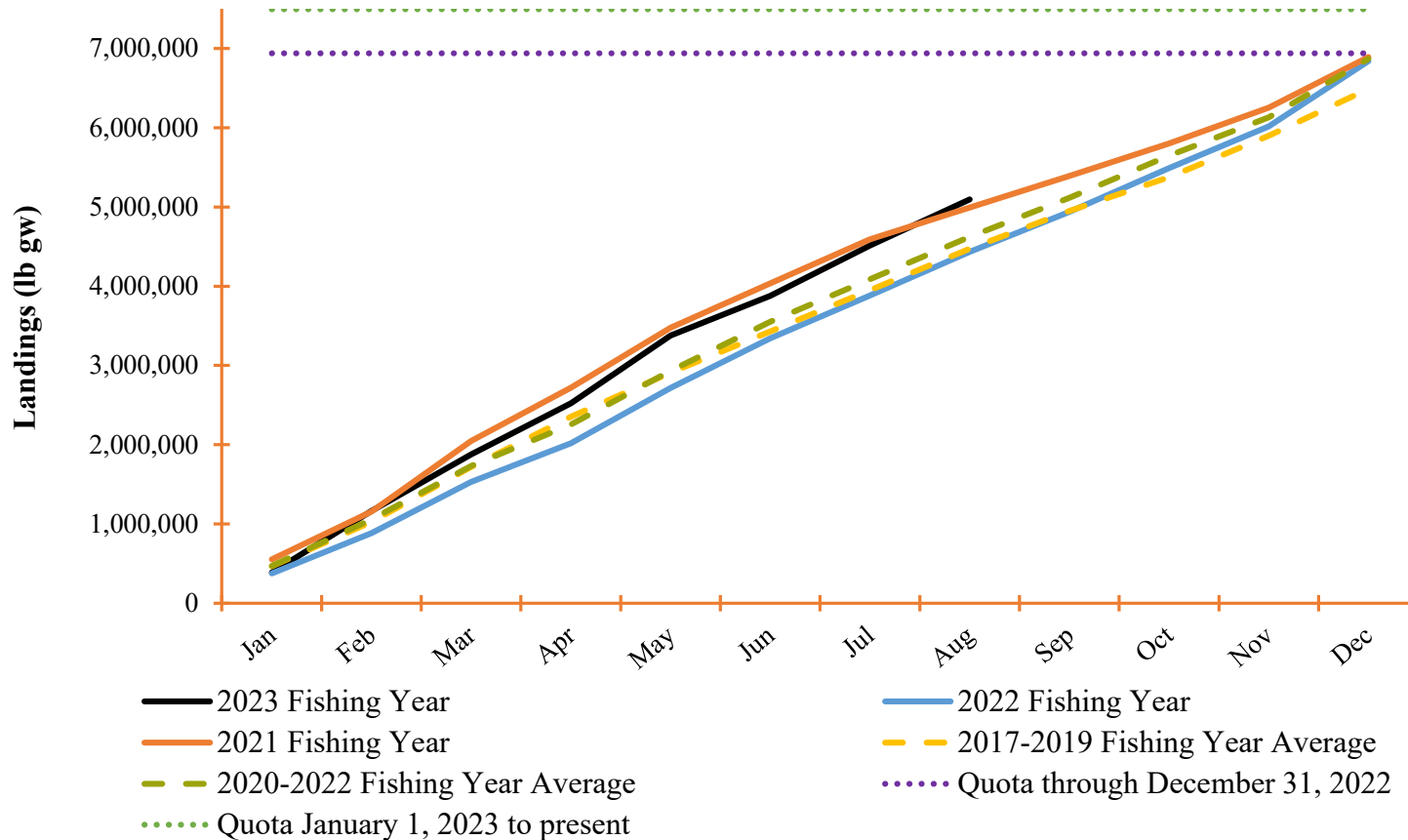
Tab B,
No.13aii

- All 2023 landings are preliminary.
- Commercial landings are available through August 31, 2023.

Red Snapper IFQ Landings

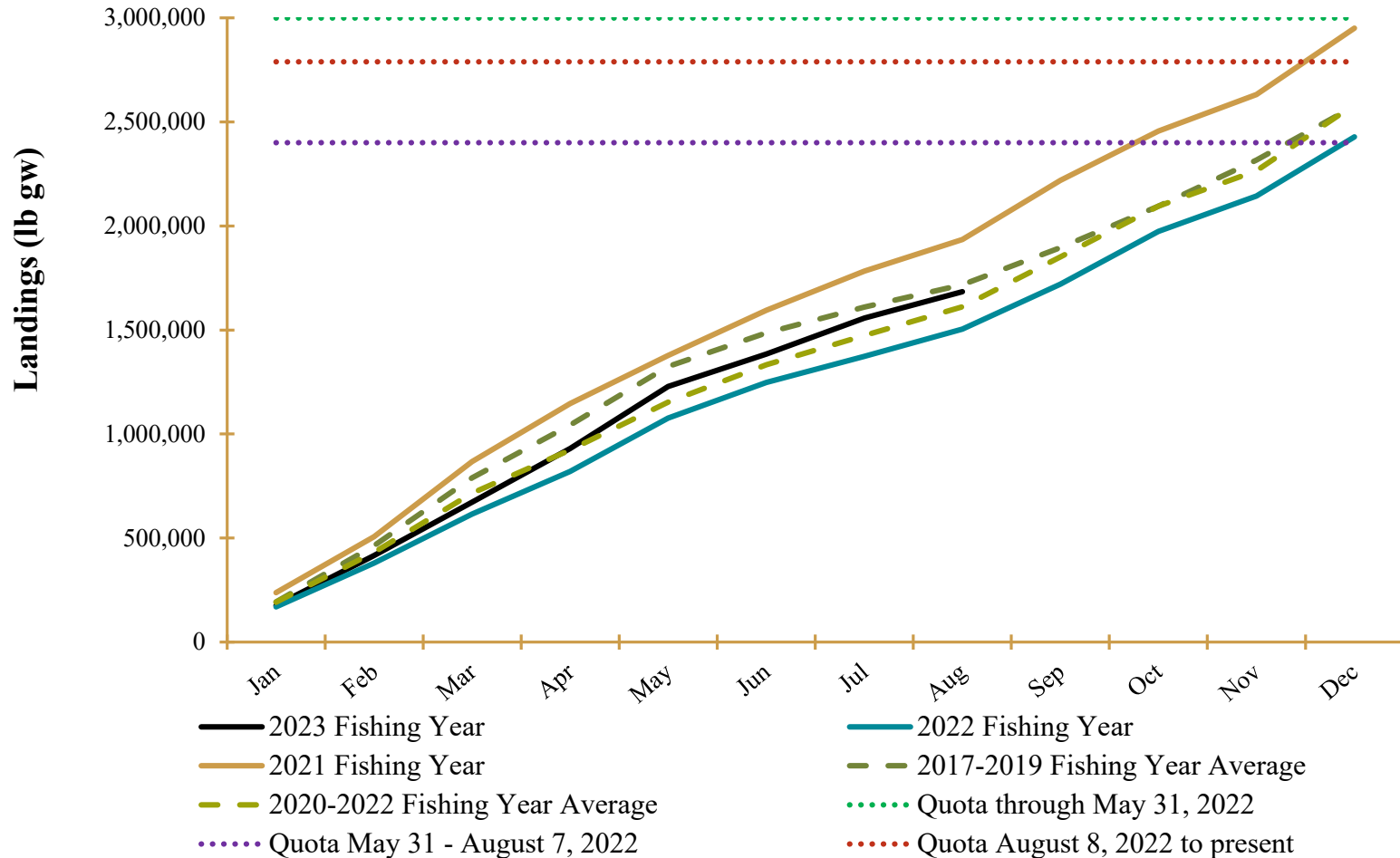


RED SNAPPER *Lutjanus campechanus*



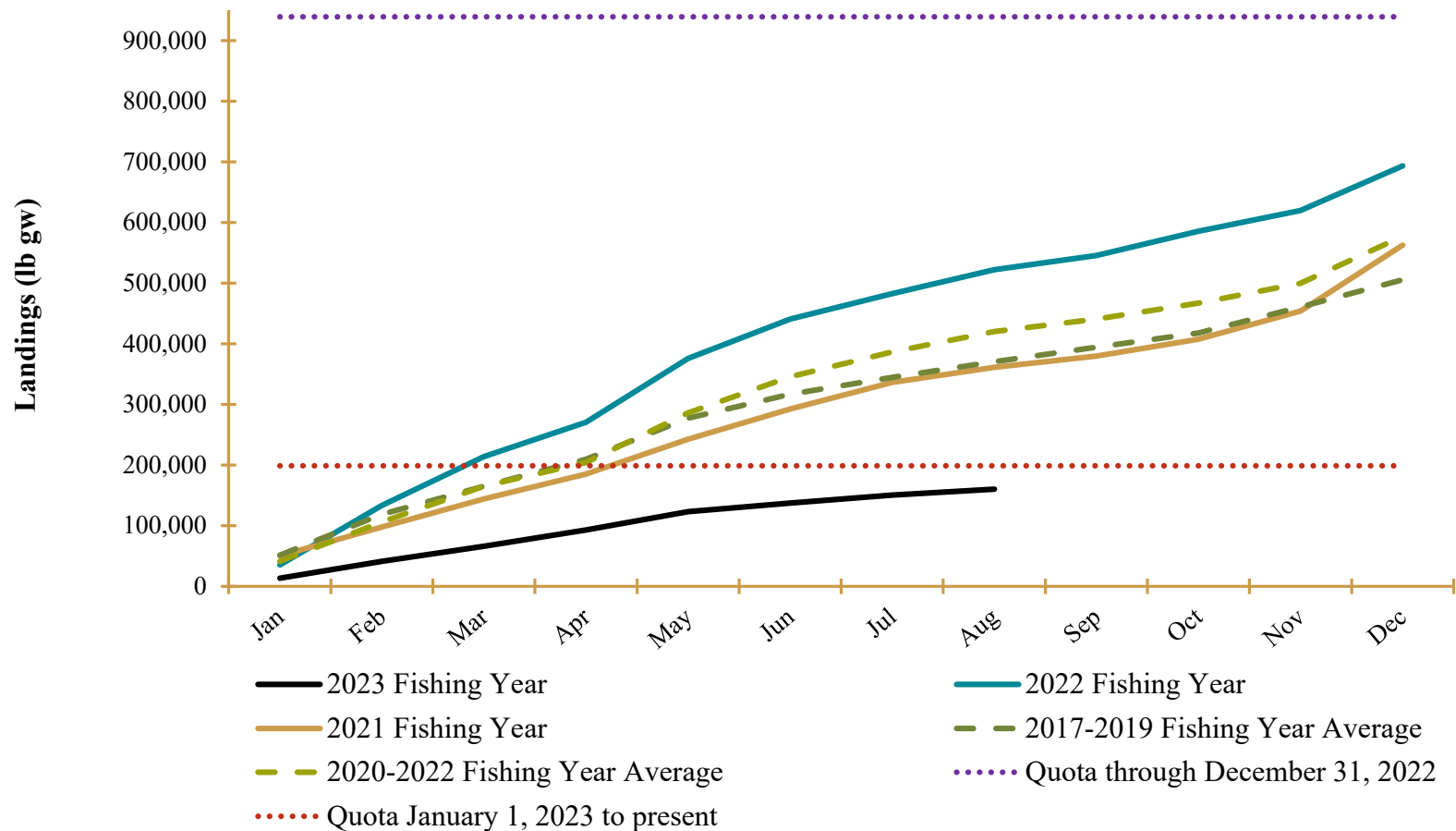
Note: 2019 to December 31, 2022, red snapper IFQ quota was 6,937,838 lbs gw. January 1, 2023, quota was 7,075,676 lbs gw and was increased to 7,493,784 lbs gw on July 10, 2023. Fishing year is January 1 through December 31.

Red Grouper IFQ Landings



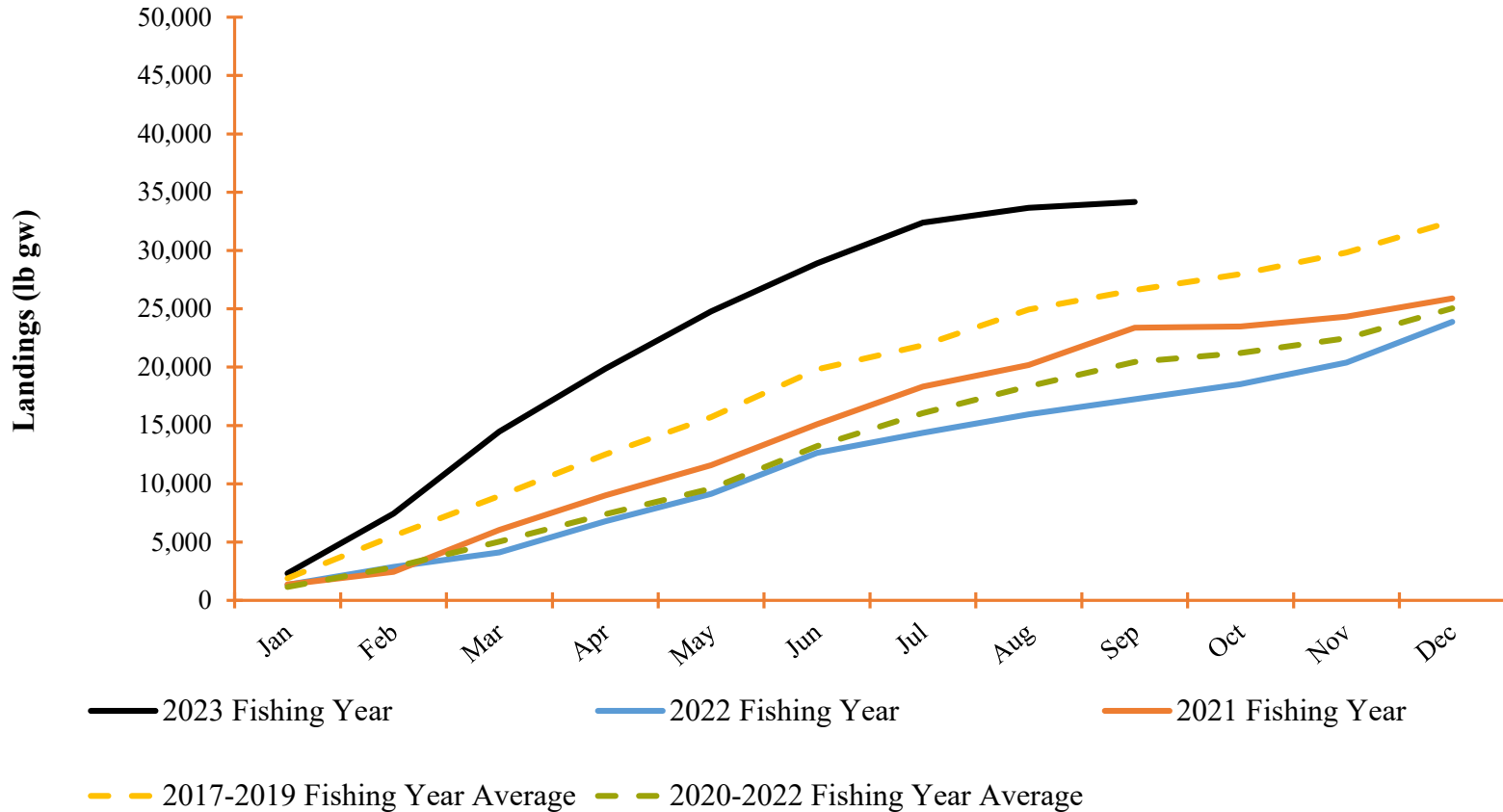
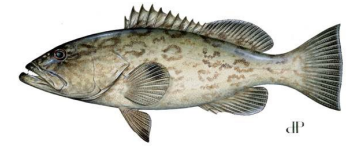
Note: 2019 to May 31, 2022 red grouper IFQ quota was 3,000,000 lbs gw. June 1 to August 7, 2022, quota was 2,400,000 lbs gw. August 8, 2022, to present quota is 2,790,000 lbs gw. Fishing year is January 1 through December 31.

Gag Grouper IFQ Landings



Note: 2015 to December 31, 2022 gag grouper IFQ quota was 939,000 lbs gw. January 1, 2023 to present available quota is 199,000 lbs gw due to the gag Interim Rule being implemented. Fishing year is January 1 through December 31.

Black Grouper IFQ Landings



Note: Black grouper are part of the shallow-water grouper complex. The ACL for this complex is 710,000 lbs gw. Fishing year is January 1 through December 31.