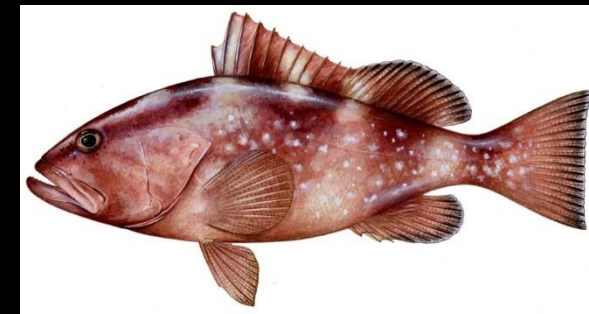


# Draft Reef Fish Amendment 53: Red Grouper Allocations and Annual Catch Levels and Targets



October 27, 2020  
Tab B, 6a

# Background

- The purposes are to revise the red grouper allocation between the commercial and recreational sectors using the best scientific information available and to modify the total and sector ACLs based on results of the recent stock assessment and subsequent OFL and ABC recommendations from the SSC.
- The need is to use the best scientific information available to establish Gulf red grouper sector allocations and ACLs, ensuring that the historical participation by the recreational and commercial sectors is accurately reflected by the sector ACLs, and that recreational ACL is consistent with the data used to monitor recreational landings and trigger accountability measures (AM).



# Background

- Acknowledging that the status quo sector allocations for red grouper are based on the older and no longer used MRFSS data, the Council requested that the SSC examine alternative sector allocation scenarios considering the contemporary FES calibrated MRIP data.
- The SSC reviewed these scenarios in January 2020, and after affirming that SEDAR 61 (which uses the MRIP FES recreational landings estimates) represented the best scientific information available, recommended the projections included in **Alternatives 3-5 of Action 1** as scientifically valid estimates of OFL and ABC.
  - The OFL and ABC included in **Alternative 2 of Action 1** was previously recommended at the September 2019 SSC meeting.



# FMP Objectives

At its August 2019 meeting, the Council last modified the objectives. Any allocation or reallocation must be consistent with the Reef Fish FMP objectives.

- 1. To prevent overfishing and rebuild overfished stocks.
- 2. To achieve robust fishery reporting and data collection systems across all sectors for monitoring the reef fish fishery, which minimizes scientific, management, and risk uncertainty.
- 3. To conserve and protect reef fish habitat.
- 4. To minimize conflicts between user groups.
- 5. To minimize and reduce dead discards.
- 6. To manage Gulf stocks at OY as defined in MSA.



# FMP Objectives

- 7. To revise the definitions of the fishery management unit and fishery to reflect the current species composition of the reef fish fishery.
- 8. To encourage and periodically review research on the efficacy of artificial reefs for management purposes.
- 9. To promote stability in the fishery by allowing for enhanced fisher flexibility and increasing fishing opportunities to the extent practicable.
- 10. To avoid to the extent practicable the "derby" type fishing season.
- 11. To provide for cost-effective and enforceable management of the fishery.
- 12. To promote and maintain accountability in the reef fish fishery.



# Allocation Review Triggers

- The Fisheries Allocation Review Policy (NMFS Policy Directive 01-119) and associated Procedural Directive on allocation review triggers (NMFS Procedural Directive 01-119-01) requested the Regional Fishery Management Councils establish allocation review triggers
- Two review triggers were selected by the Gulf Council: time-based and public input
- With the time-based review trigger, an allocation review will occur every 7 years for the recreational and commercial allocations of red grouper
- The Council may initiate supplementary allocation reviews at any time



# Action 1

Modify the Sector Allocations, OFL, ABC, and ACLs for Red Grouper

- **Alternative 1:** No Action – Maintain the sector allocations of the total ACL for red grouper between the commercial and recreational sectors. The allocations for red grouper are 76% commercial and 24% recreational. The allocation was derived from the average landings using Marine Recreational Fisheries Statistics Survey (MRFSS) data from the years 1986 through 2005, established in Reef Fish Amendment 30B. Maintain the current OFL, ABC, and ACLs.
  - **Alternative 1** is not legally viable because it is not based on the best scientific information available, and would retain the current OFL and ABC, which are above the values produced by the SEDAR 61 stock assessment and recommended by the SSC.



# Action 1

- **Alternative 2:** Maintain the sector allocations of the total ACL as 76% commercial and 24% recreational. Revise the OFL and ABC as recommended by the Scientific and Statistical Committee (SSC) based on Southeast Data Assessment and Review (SEDAR) 61 (2019). Set the stock ACL equal to the stock ABC.
- **Alternative 3:** Revise the sector allocations of the total ACL between the recreational and commercial sectors as the average landings using Fishing Effort Survey (FES)-adjusted Marine Recreational Information Program (MRIP FES) data during the years 1986 through 2005, based on the Southeast Fisheries Science Center (SEFSC) ACL monitoring datasets. The allocations for red grouper are 59.3% commercial and 40.7% recreational. Revise the OFL and ABC as recommended by the SSC based on SEDAR 61 (2019). Set the stock ACL equal to the stock ABC.





# Action 1

- **Alternative 4:** Revise the sector allocations of the total ACL between the recreational and commercial sectors as the average landings using MRIP FES data during the years 1986 through 2009, based on the SEFSC ACL monitoring datasets. The allocations for red grouper are 60.5% commercial and 39.5% recreational. Revise the OFL and ABC as recommended by the SSC based on SEDAR 61 (2019). Set the stock ACL equal to the stock ABC.
- **Alternative 5:** Revise the sector allocations of the total ACL between the recreational and commercial sectors as the average landings using MRIP FES data during the years 1986 through 2018, based on the SEFSC ACL monitoring datasets. The allocations for red grouper are 59.7% commercial and 40.3% recreational. Revise the OFL and ABC as recommended by the SSC based on SEDAR 61 (2019). Set the stock ACL equal to the stock ABC.



# Action 1

	OFL*	ABC	Total ACL	Comm ACL	Rec ACL
<b>Alt 1**</b> <b>(76% comm, 24% rec)</b>	14.16	13.92	4.16	3.16	1.00
<b>MRIP FES equivalent</b>			(5.26)		(2.10)
<b>Alt 2***</b> <b>(76% comm, 24% rec)</b>	5.35	4.90	4.90	3.72	1.18
<b>Alt 3***</b> <b>(59.3% comm, 40.7% rec)</b>	4.66	4.26	4.26	2.53	1.73
<b>Alt 4***</b> <b>(60.5% comm, 39.5% rec)</b>	4.70	4.30	4.30	2.60	1.70
<b>Alt 5***</b> <b>(59.7% comm, 40.3% rec)</b>	4.67	4.28	4.28	2.56	1.72

- \*Values for OFL, ACB, total ACL, commercial ACL, and recreational ACL are in millions of pounds (mp) gutted weight (gw).
- \*\*The recreational portion of the current OFL, ABC, and ACLs are based on MRIP CHTS data.
- \*\*\*The recreational sector ACL is in MRIP FES currency.



# Action 2

## Modify the Gulf Red Grouper Annual Catch Targets

- **Alternative 1:** No Action – Maintain the current buffer between the ACL and ACT for each sector. The commercial buffer is 5%, and the recreational buffer is 8%.
- **Alternative 2:** Apply the ACL/ACT Control Rule to revise the buffer between the ACL and ACT for each sector. The commercial buffer is 0%, and the recreational buffer is 9%.
- **Alternative 3:** Maintain the current buffer between the ACL and ACT for the commercial sector, and apply the ACL/ACT Control Rule to revise the buffer between the ACL and ACT for the recreational sector. The commercial buffer is 5%, and the recreational buffer is 9%.



# Action 2

Commercial and recreational ACTs, based on Action 1 and Action 2 selections

		Action 2					
		Alt 1		Alt 2		Alt 3	
		Comm	Rec	Comm	Rec	Comm	Rec
Action 1	Alt 1	3.00	0.92** (1.93)	N/A	N/A	N/A	N/A
	Alt 2	3.53	1.09	3.72	1.07	3.53	1.07
	Alt 3	2.40	1.59	2.53	1.57	2.40	1.57
	Alt 4	2.47	1.56	2.60	1.55	2.47	1.55
	Alt 5	2.43	1.58	2.56	1.57	2.43	1.57

- \* Values are in millions of pounds, gutted weight and in MRIP FES currency.
- \*\*The recreational sector ACT for Action 1, Alternative 1 is in CHTS currency; the recreational sector ACT in MRIP FES currency is in parentheses.



# Action 2

The predicted closure dates for each recreational ACT (mp gw) currently in Amendment 53 generated from predicted landings and also predicted landings upper and lower 95% confidence intervals.

Alternatives (Action 2 – Action 1)	ACL	Buffer	ACT	Predicted Closure Date	Season Length (95% Confidence Interval)
1-1	2.10	8%	1.93	No Closure	259—365 Days
1-2	1.18	8%	1.09	July 26	157—365 Days
2-2; 3-2	1.18	9%	1.07	July 23	155—365 Days
1-3	1.73	8%	1.59	November 20	211—365 Days
2-3; 3-3	1.73	9%	1.57	November 16	208—365 Days
1-4	1.70	8%	1.56	November 14	207—365 Days
2-4; 3-4	1.70	9%	1.55	November 12	206—365 Days
1-5	1.72	8%	1.58	November 18	209—365 Days
2-5; 3-5	1.72	9%	1.57	November 16	208—365 Days



# Next Steps

- Next steps are contingent upon Council motions and, if directed, ...
- SERO would send a Notice of Availability (NOA) to be published with EPA
  - 45 day clock on comments; takes a week (7 days) to publish after sent
- Council staff would schedule and hold public hearing meetings

