

Gulf of Mexico Greater Amberjack Stock Assessment

SSC's Summary Presentation
to

Gulf of Mexico Fishery Management Council

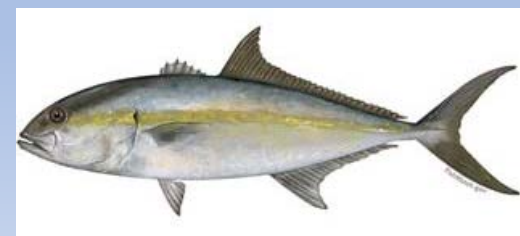
January, 2021



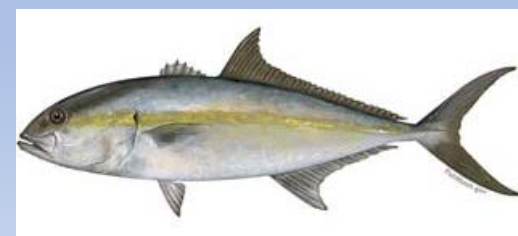
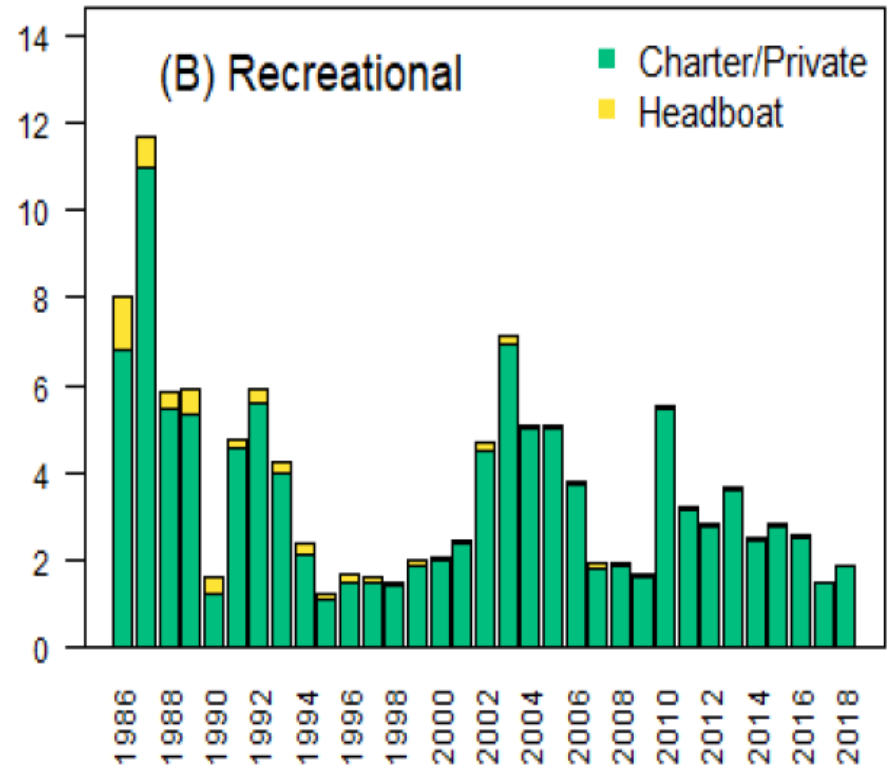
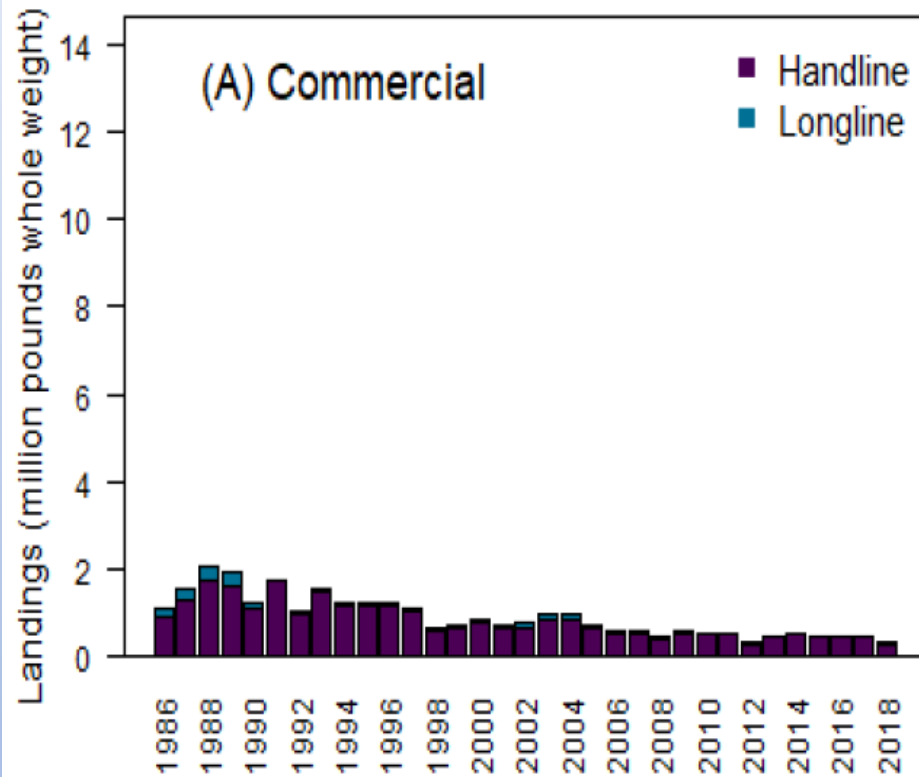
Gulf of Mexico Greater Amberjack

Reference Point Criteria		Current Benchmarks	
SPR at $SSB_{MSYproxy}$	30%	SSB_{2018}	2,433
Base natural mortality (M)	0.28	$F_{Current}$ (geom. mean: 2016-2018)	0.302
Steepness	0.777	SSB_{2018} / SSB_0 (SPR_{2018})	0.1
Generation Time	7.59	$SSB_{2018} / SSB_{MSYproxy}$	0.34
SSB_0 (Unfished)	23,733	$SSB_{2018} / MSST$	0.68
$SSB_{MSYproxy}$	7,119	--MSST Overfished?	Yes
$MSST = (0.5) * SSB_{MSYproxy}$	3,560	$F_{Current} / MFMT$	1.729
$MFMT = F_{MSYproxy}$	0.175	--Overfishing?	Yes
F_{OY} (F at optimum yield)	0.131		

January, 2021

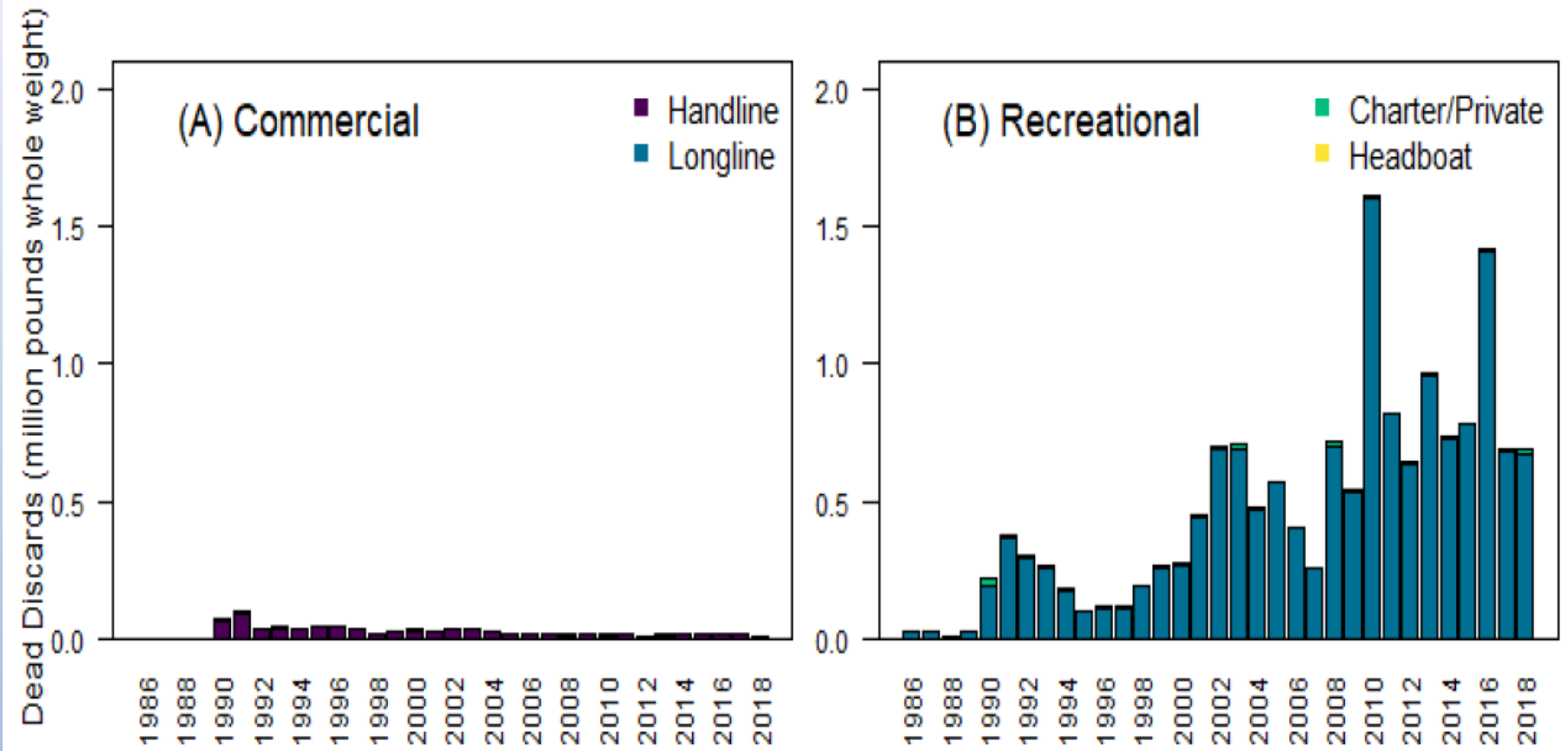


Gulf of Mexico Greater Amberjack Landings millions of lbs whole weight



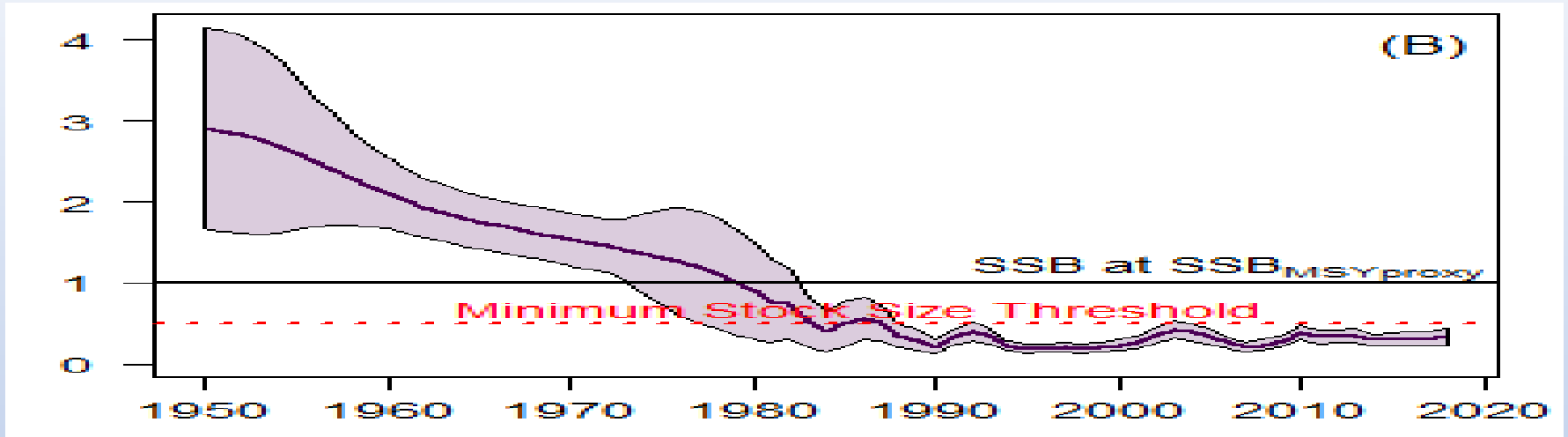
January, 2021

Gulf of Mexico Greater Amberjack Discards millions of lbs whole weight

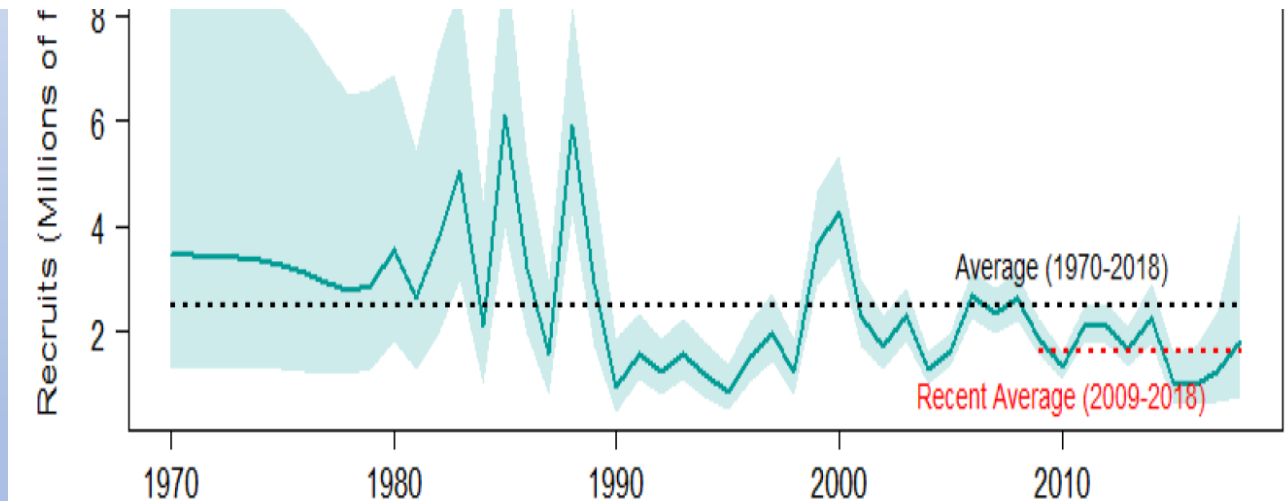


January, 2021

Gulf of Mexico Greater Amberjack



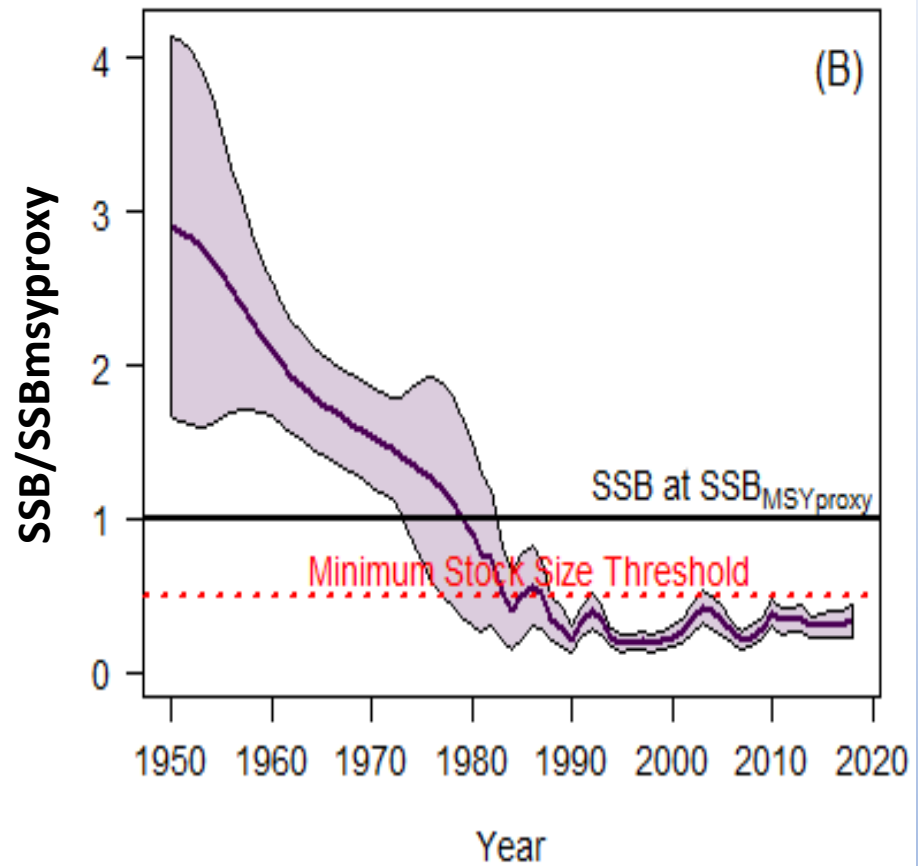
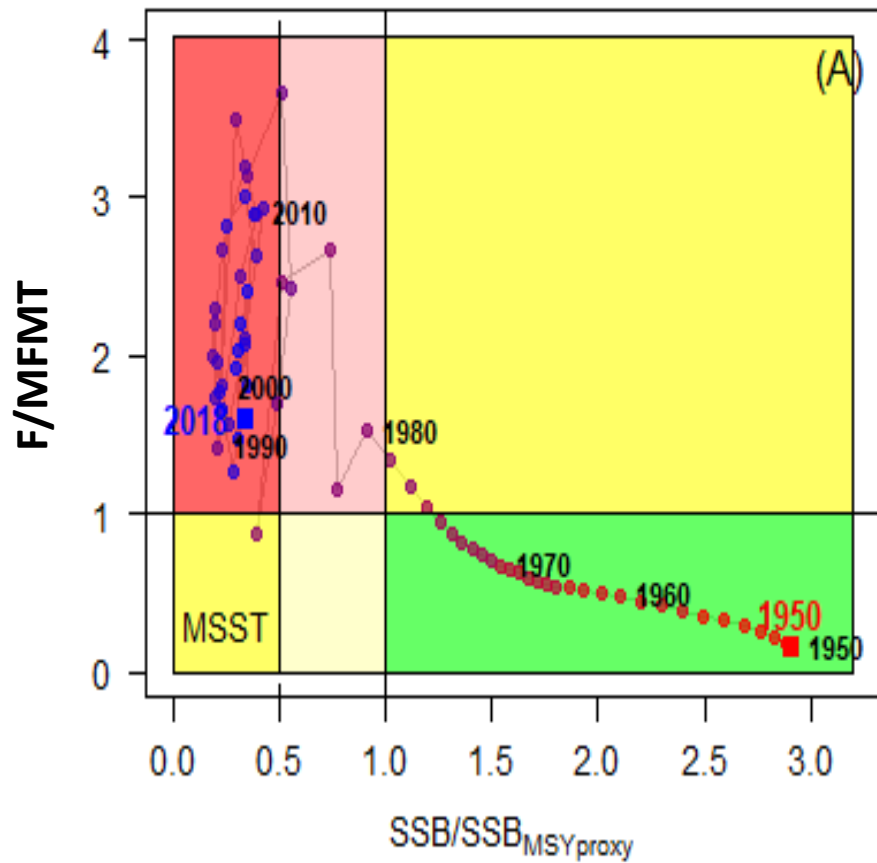
**Spawning
biomass and
Recruits**



January, 2021



Gulf of Mexico Greater Amberjack

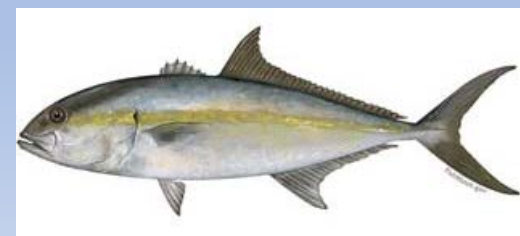


January, 2021

Gulf of Mexico Greater Amberjack

Reference Point Criteria		Current Benchmarks	
SPR at $SSB_{MSYproxy}$	30%	SSB_{2018}	2,433
Base natural mortality (M)	0.28	$F_{Current}$ (geom. mean: 2016-2018)	0.302
Steepness	0.777	SSB_{2018} / SSB_0 (SPR_{2018})	0.1
Generation Time	7.59	$SSB_{2018} / SSB_{MSYproxy}$	0.34
SSB_0 (Unfished)	23,733	$SSB_{2018} / MSST$	0.68
$SSB_{MSYproxy}$	7,119	--MSST Overfished?	Yes
$MSST = (0.5) * SSB_{MSYproxy}$	3,560	$F_{Current} / MFMT$	1.729
$MFMT = F_{MSYproxy}$	0.175	--Overfishing?	Yes
F_{OY} (F at optimum yield)	0.131		

January, 2021

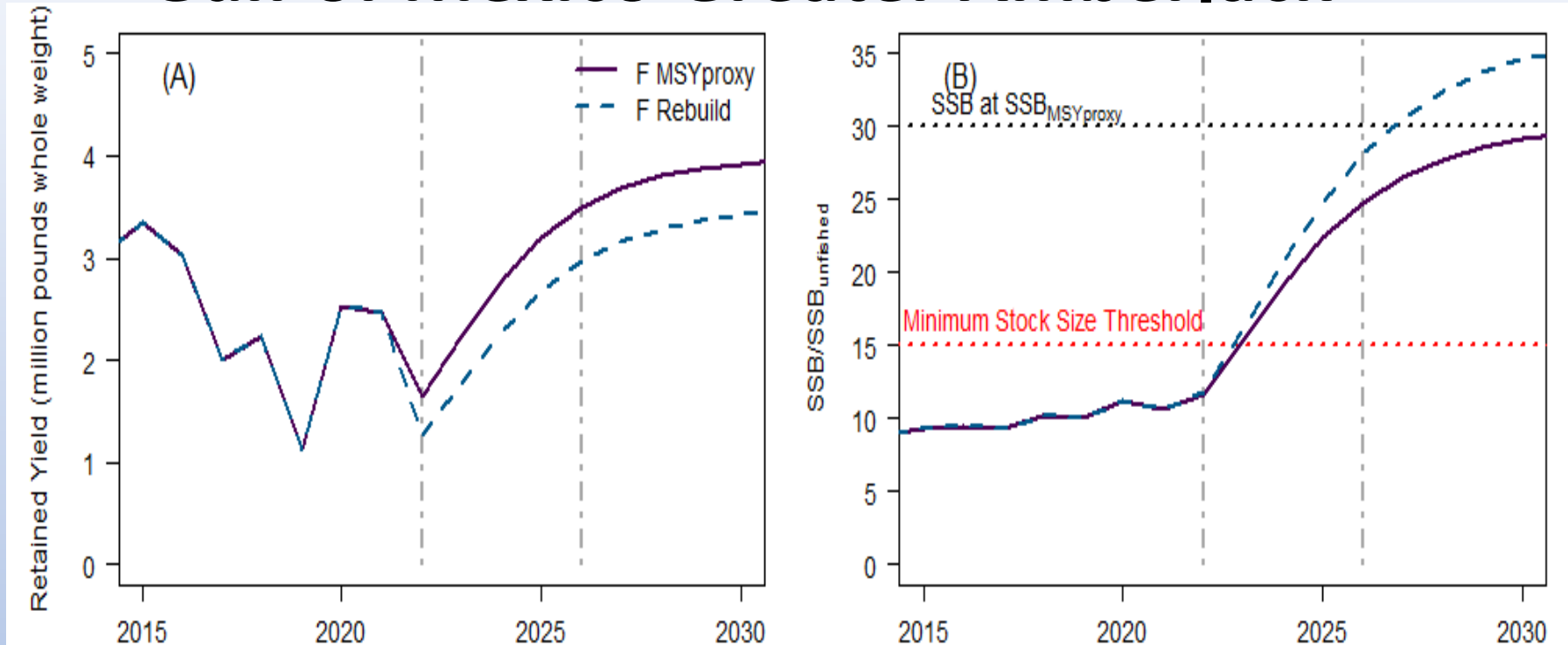


Gulf of Mexico Greater Amberjack

Motion: The SSC determined that the SEDAR 70 operational assessment of Gulf of Mexico Greater Amberjack represents the best scientific information available, and, based on the assessment results, the stock status is overfished and is undergoing overfishing.

Motion carried 16-8 with 3 absent.

Gulf of Mexico Greater Amberjack



(A) Retained Yield and (B) resulting ratios of SSB to unfished SSB (expressed as a percentage) for projections fishing at $F_{MSYproxy}$ (Base Model) and at $F_{Rebuild}$ which will rebuild the stock to the $SSB_{MSYproxy}$ by 2027. All scenarios assume recent average recruitment (2009-2018), and reference points) are marked with horizontal dotted lines. Vertical dashed lines identify the first five years of projected yields: 2022 through 2026.

Gulf of Mexico Greater Amberjack

OFL mp ww

2022	1.637
2023	2.223
2024	2.781

ABC mp ww

2022	1.255
2023	1.767
2024	2.270

The SSC made the following recommendations (in millions of pounds [mp] whole weight [ww]) for the overfishing limit (OFL) and acceptable biological catch (ABC) for 2022 – 2024, based on a rebuilding plan to rebuild the stock by 2027:

January, 2021

