

Tab C, No. 5(d)



Summary of Responses from 1/8/20 – 2/7/20:

Something's Fishy: Cobia



What is Something's Fishy?

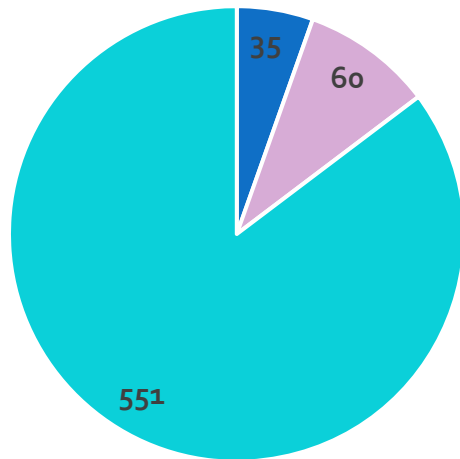
A tool used to gather information on a fish stock from active fishermen on trends or unusual occurrences that scientists and managers may not have observed.

- Responses gathered from January 8, 2020 – February 7, 2020
- Final report generated and presented to the stock assessment analysts on April 29, 2020



Respondents

Response by Sector



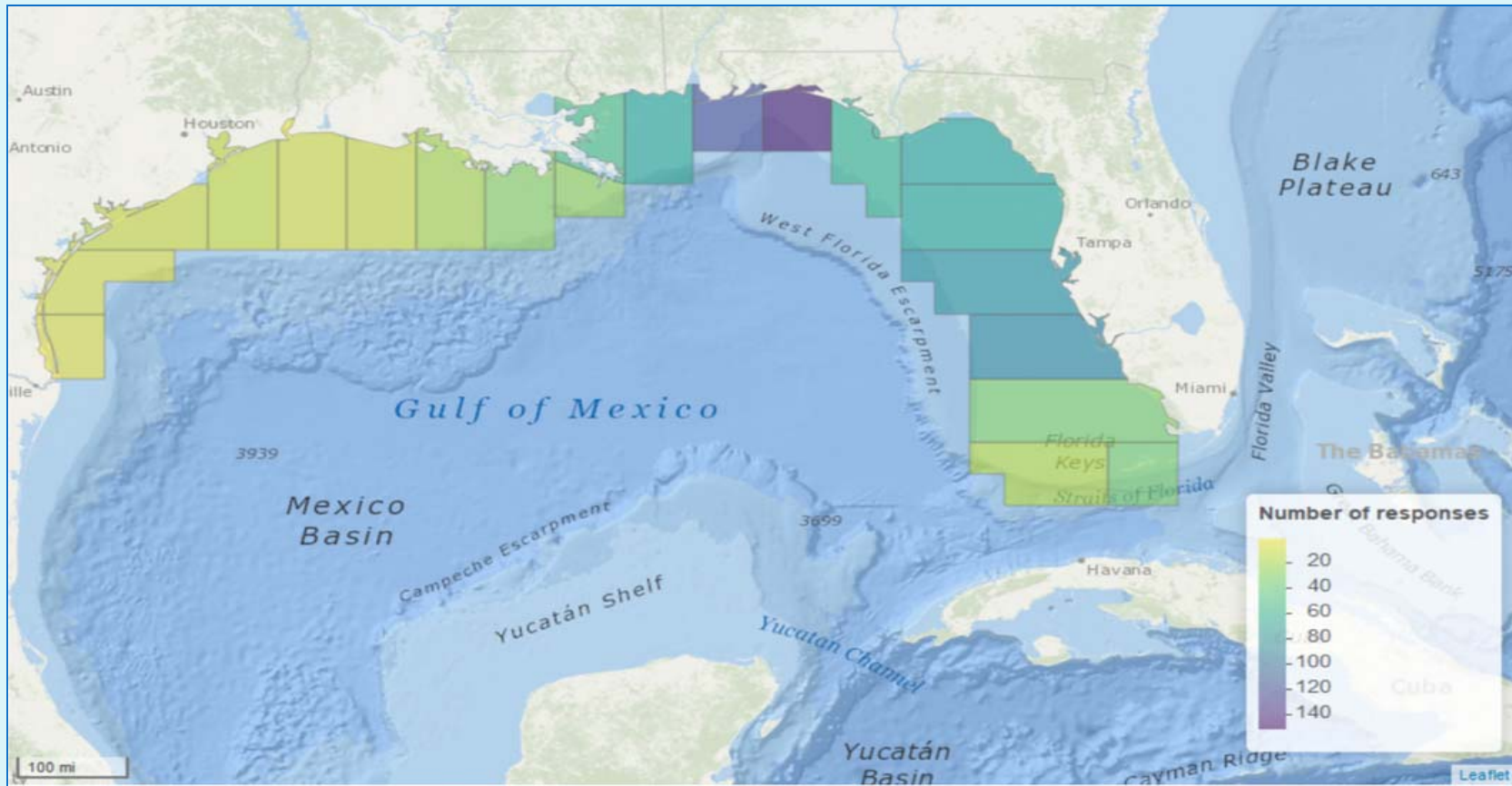
■ Commercial ■ Federal For-hire ■ Private

586 Respondents

- Self-identified with sector
- Not limited to a singular response (n=646)



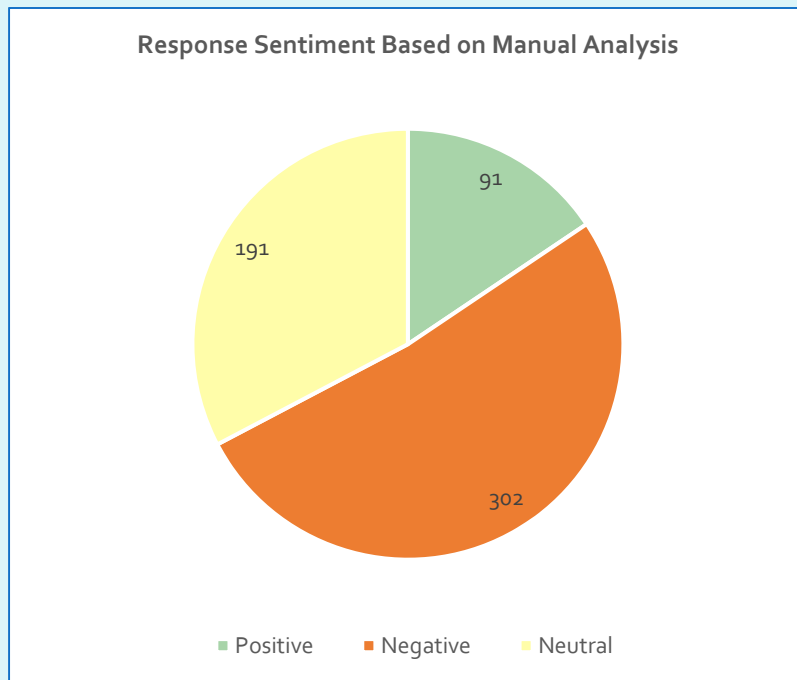
Response Location



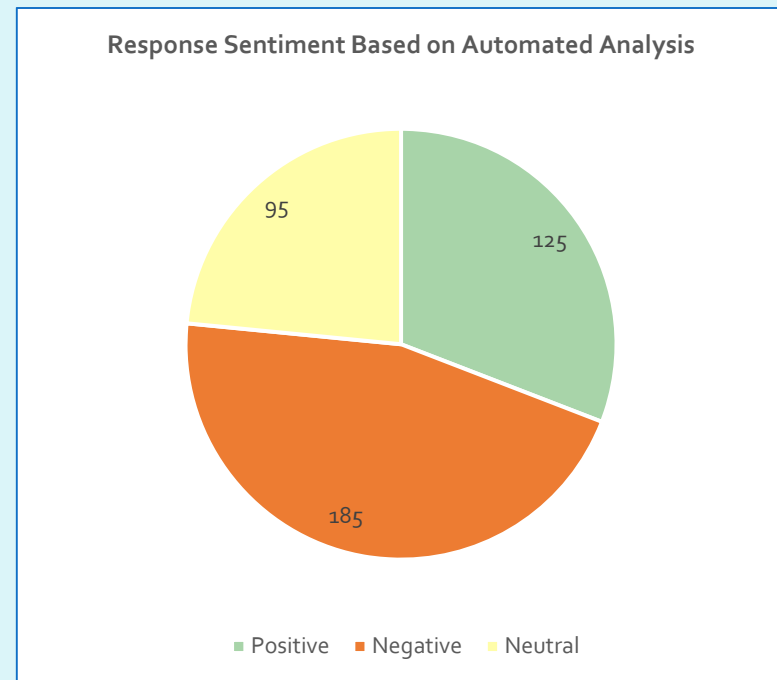
- Respondents could report observations for one or more grid location
- 878 responses were recorded

Response Sentiment

- Both manual and automated analysis showed that a majority of respondents reported a negative sentiment.
- Manual analysis showed a greater proportion of negative comments than automated analysis

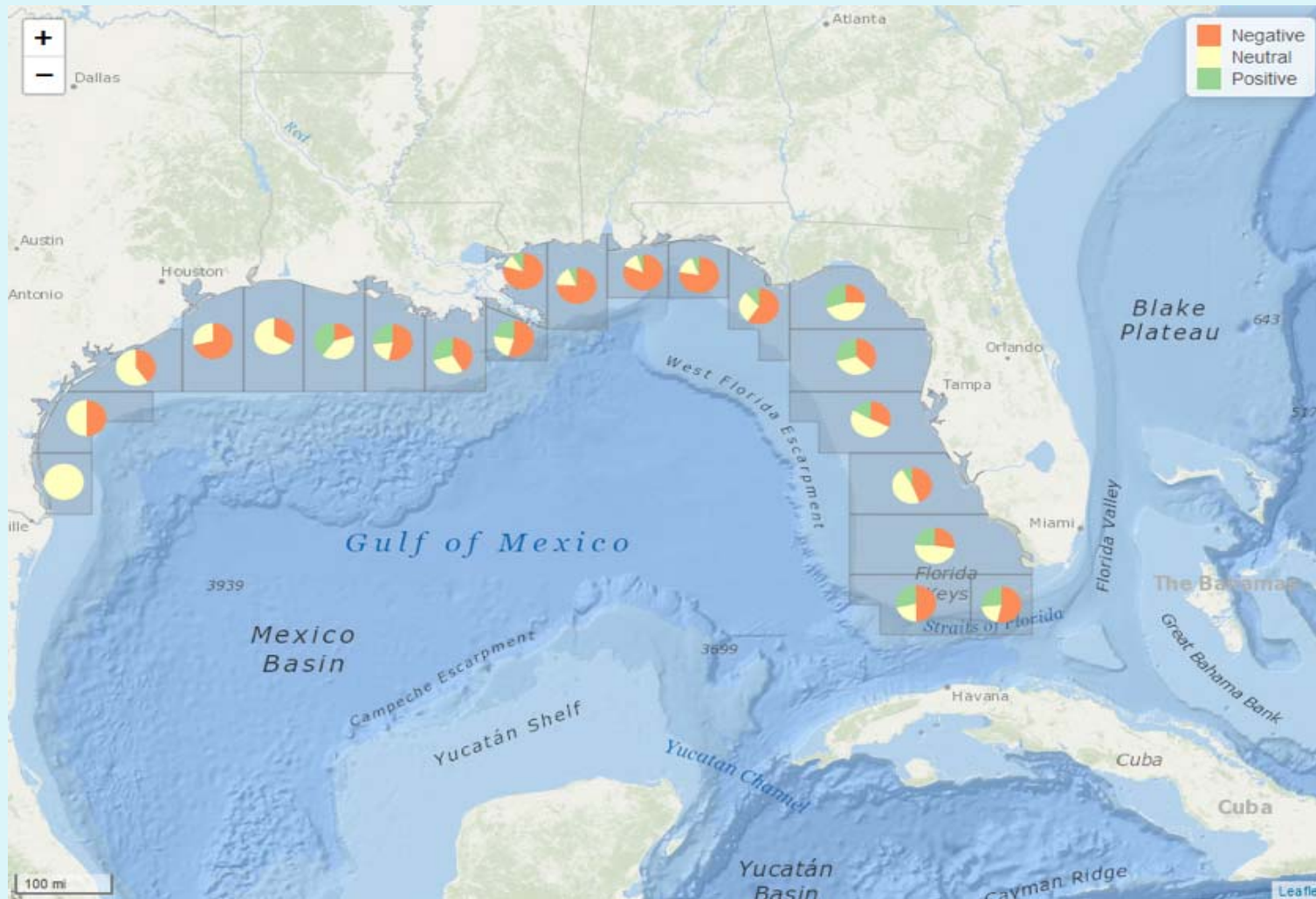


2 comments were dropped during manual analysis (n=584)



181 comments dropped during automated analysis (n=405)

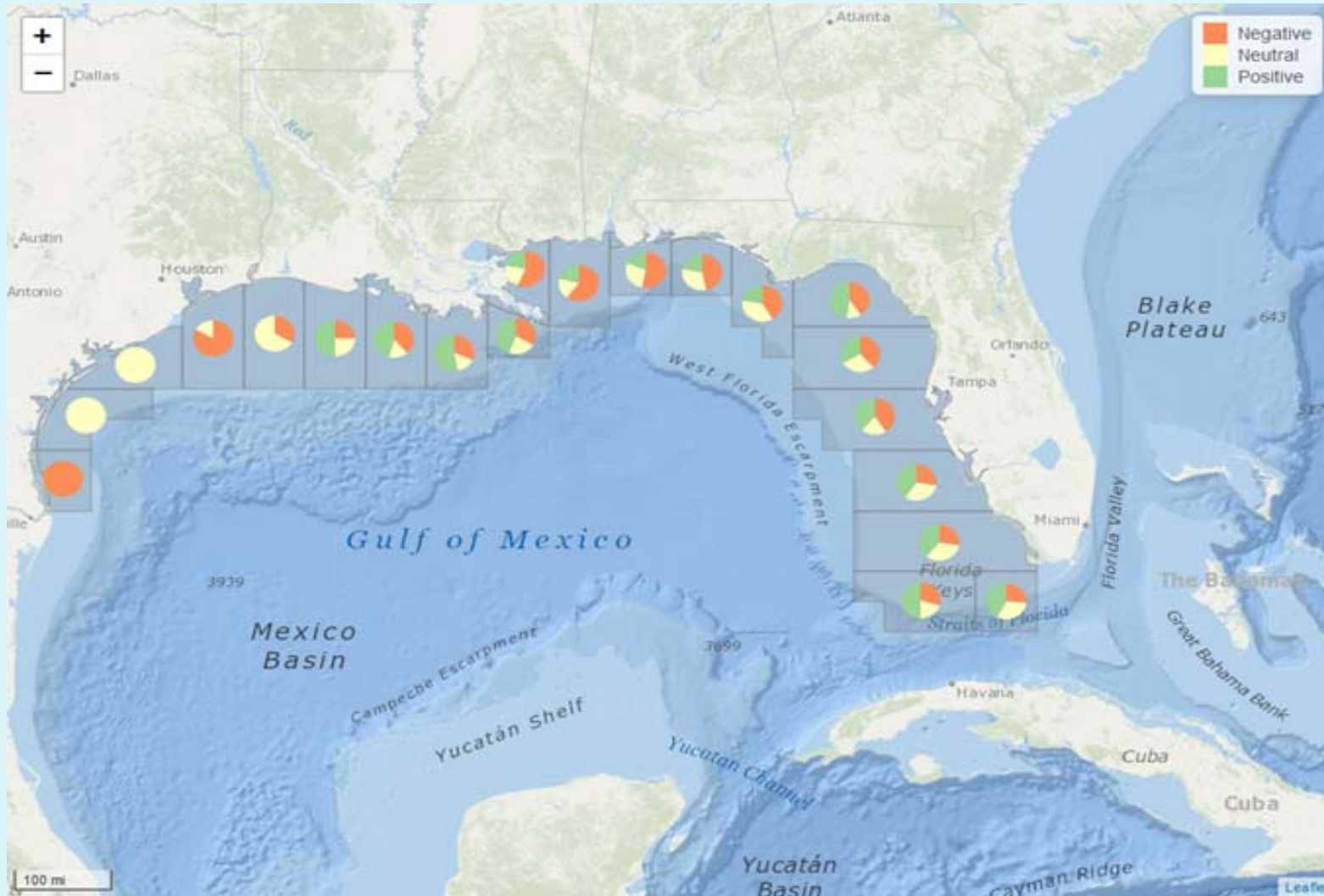
Manual Sentiment Analysis by Location



(n=584)



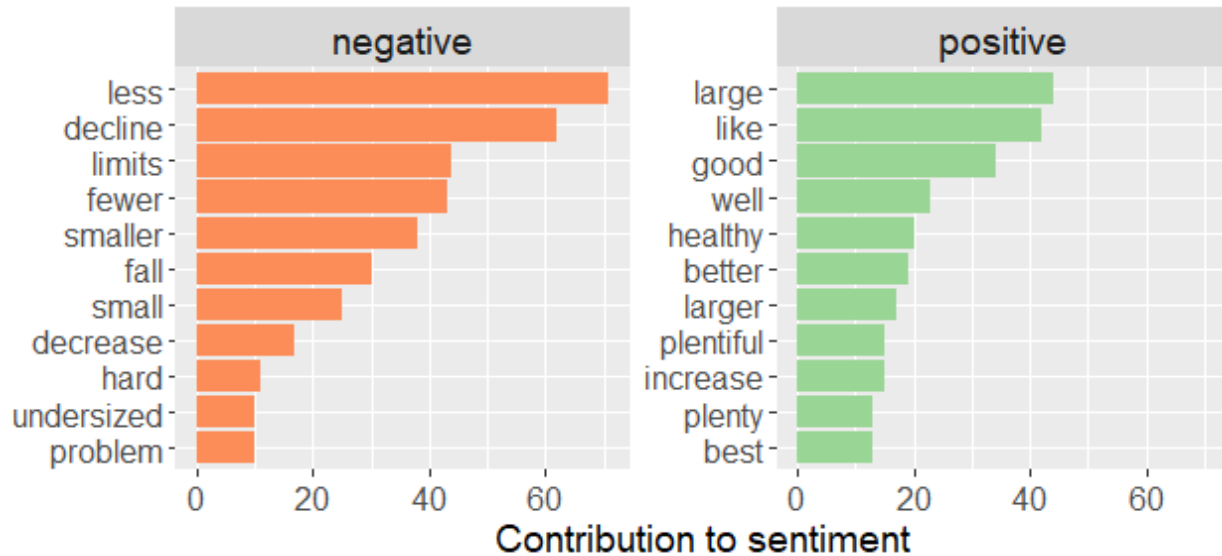
Automated Analysis by Location



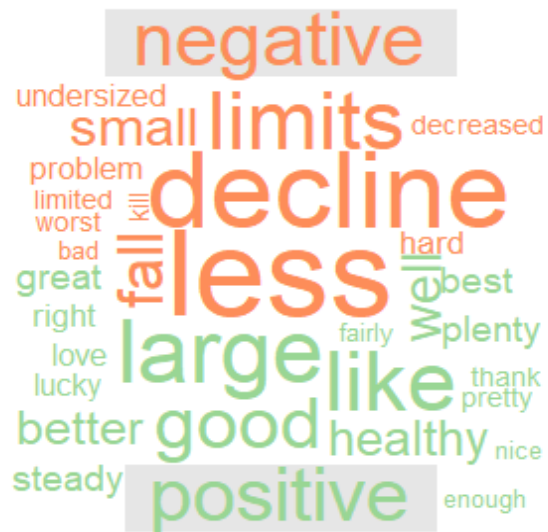
(n=405)



Automated Analysis



The most frequently used negative words could be interpreted to indicate that anglers with negative perceptions of the stock were seeing fewer fish and the fish they do see are smaller



Manual Analysis

- Many comments indicated that the average size of fish encountered is smaller than it has been historically.
- Comments indicating a negative trend in abundance noted that the spring migration had either diminished or moved farther offshore. This was attributed to red tide, influx of fresh water, or removal of structure.
- Comments indicated that the population decline has been occurring since about 2010.



Questions?

