

NOAA
FISHERIES

Tab D, No. 5

2019 Gulf of Mexico Shrimp Effort Estimates



Michelle Masi, Ph.D.

Southeast Fisheries Science Center
Galveston Laboratory
Galveston, TX USA

2021

How Cellular Electronic Logbooks (cELBs) Work

The goal of the current cELB program is to develop a better system to collect effort data in the Gulf of Mexico shrimp fishery.

Distance and speed between data points are calculated to determine the amount of time fished by location (effort). Fishing effort data are then matched to the number of pounds of shrimp catch unloaded at the dock (landings) based on date.



NOAA Fisheries Service
Galveston, TX

Data are received,
stored, and
transmitted to
Galveston.



National Coastal Data
Development Center (NCDDC)
at Stennis Space Center, MS

When the vessel is within
NON-ROAMING cellular
range, data stored on the
cELB are uploaded.



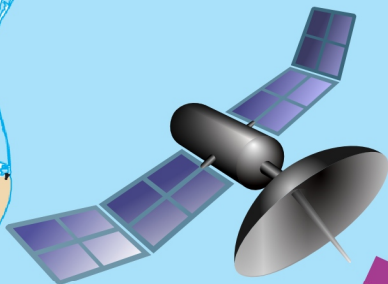
Cellular Tower

Shrimp Boat
with cELB



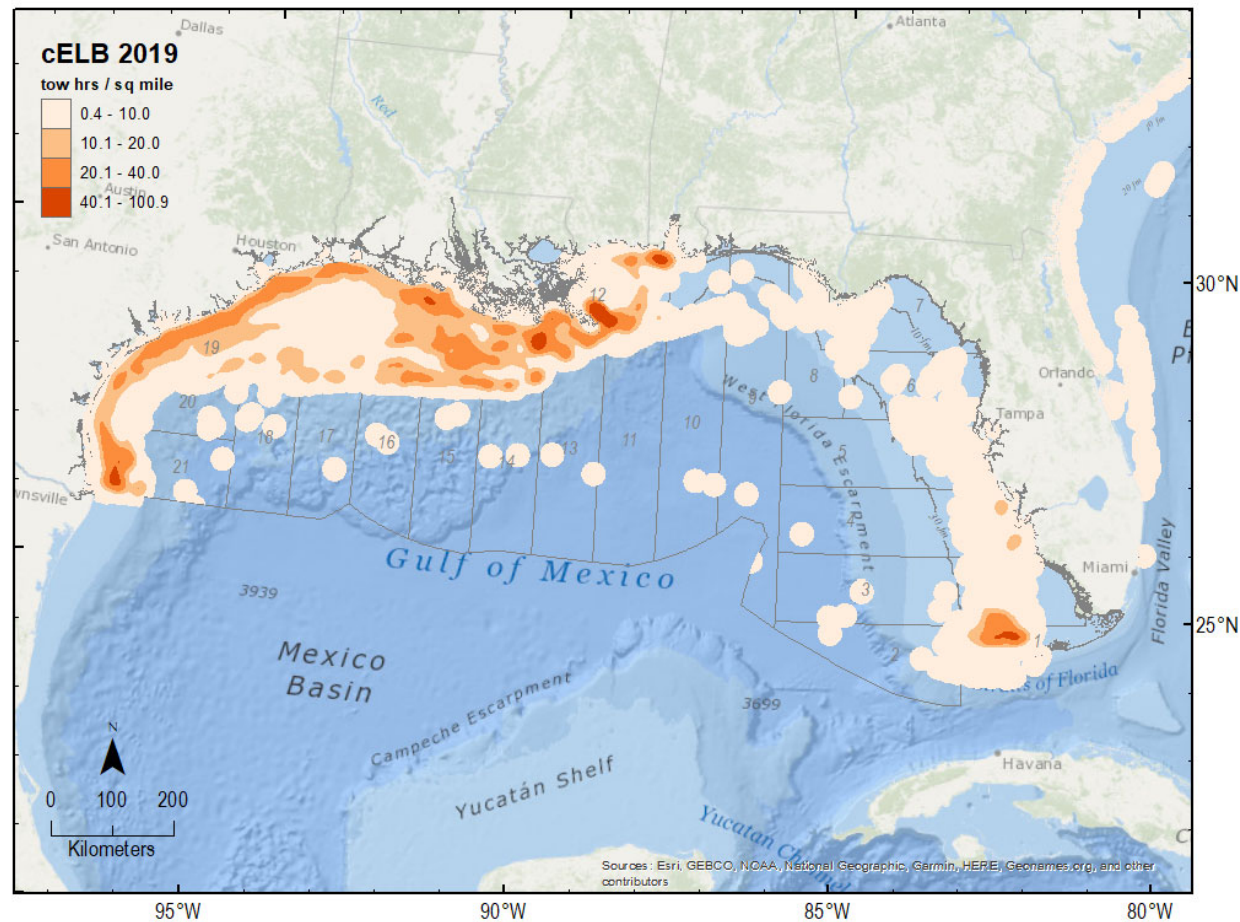
In early 2014, 500
federally-permitted
vessels were chosen
to carry a cELB.

The cELB
records the
vessel's
location every
10 minutes
using GPS
technology.



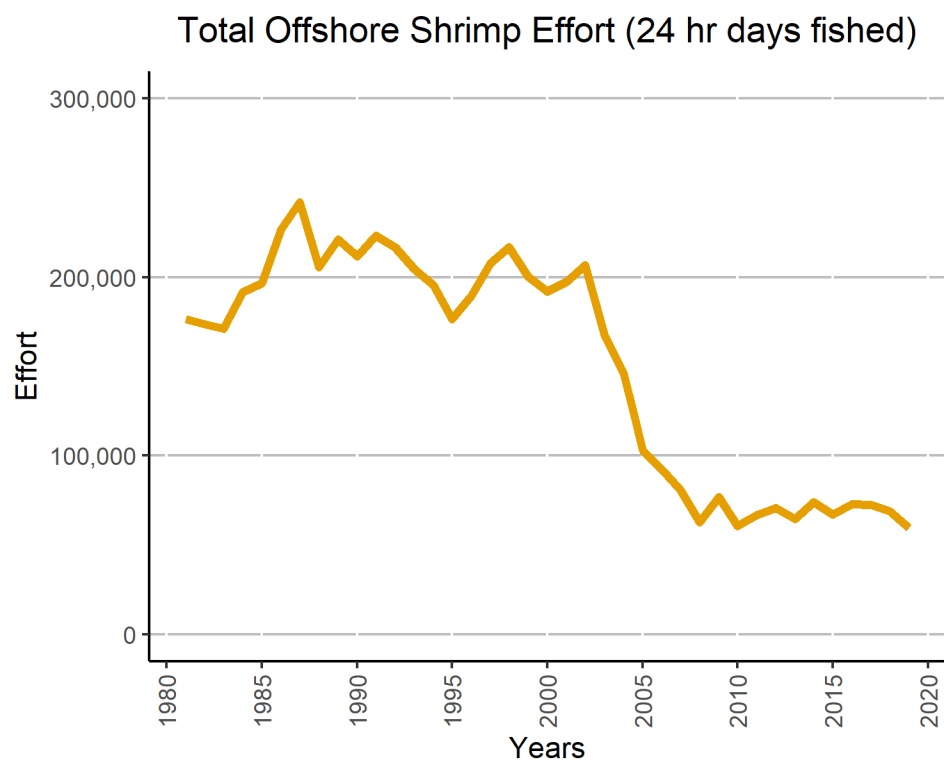
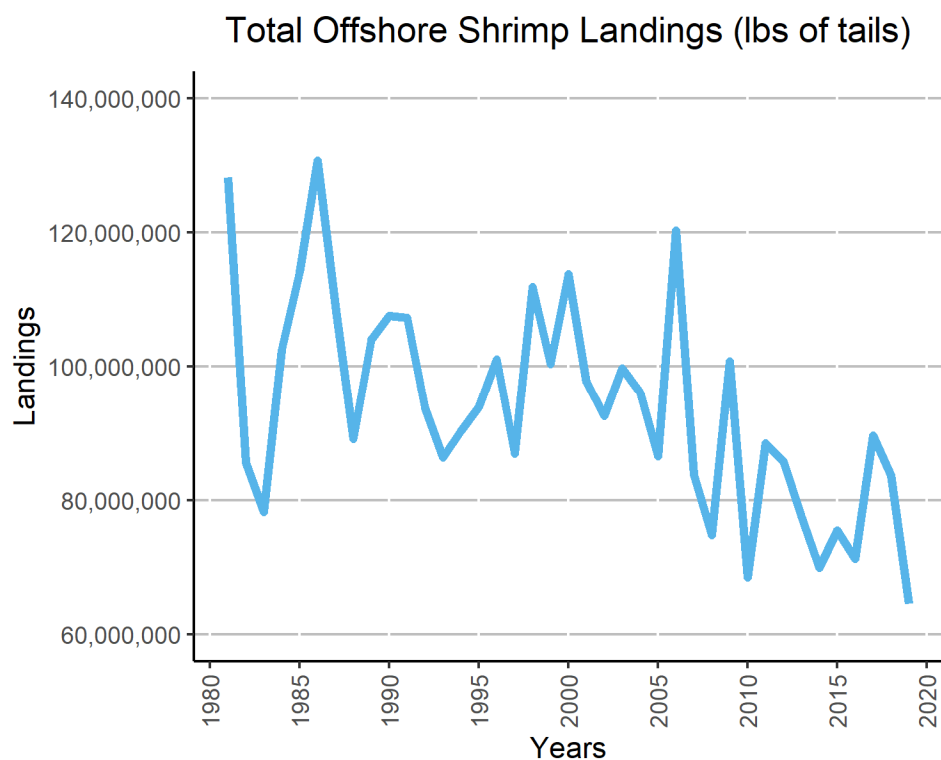
GPS Satellite

2019 Gulf Shrimp Effort Distribution (based on cELB data)



*Map courtesy of Jo Williams: SEFSC, Galveston Lab

2019 Total Offshore Gulf Shrimp Landings and Effort

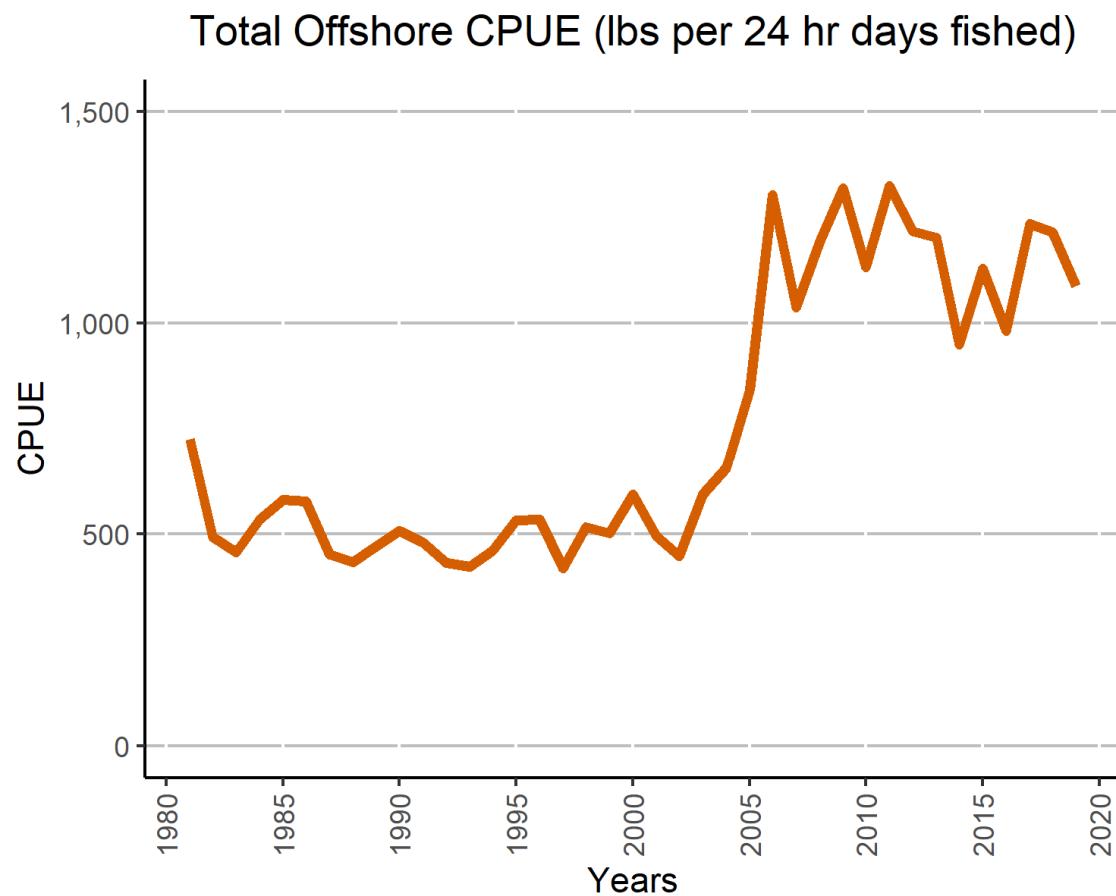


*Total = Brown + Pink + White + Royal Red + Other Shrimp



NOAA FISHERIES

2019 Total Offshore Gulf Shrimp Catch Per Unit Effort (CPUE)



*Total = Brown + Pink + White + Royal Red + Other Shrimp



2019 Total Shrimp Effort Estimates

Area	Depth	Landings (lbs of tails)	Effort (24 hr days fished)	Baseline (2001-2003)	Percent Decrease from Baseline
Offshore	—	64,545,315	59,343	—	—
Stat Zone 10–21 (W. Gulf)	10–30 fathom	21,654,475	19,802	82,811	76.09%
Total Effort (in + offshore)	—	—	86,067	—	—

*Target reduction goal for shrimp effort threshold is 60% below the baseline effort in the years 2001-2003 (Shrimp Amendment 18)

Acknowledgements

We thank the following groups/individuals for their significant contributions in making these effort estimates:

- Gulf of Mexico Shrimp Fishing Industry
- Gulf of Mexico Fishery Management Council, SSC and Shrimp AP
- Gulf of Mexico Commercial Shrimp Fishermen