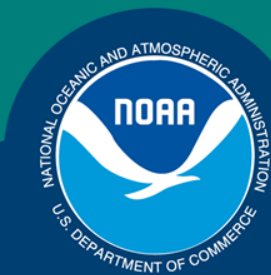


Science, Service, Stewardship

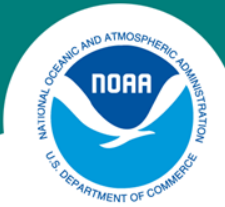


# Lionfish Requests



**NOAA  
FISHERIES  
SERVICE**

NOAA



# Exempted Fishing Permits (EFP)

- Requesting authorization to test a variety of trap designs
- Covering different areas throughout the southeast
- Primarily deepwater, outside reach of recreational divers
- Applications received
  - Florida Keys Commercial Fishermen’s Association
    - 400 traps total requested
  - Keys Fisheries
    - 1500 traps total requested
  - Reefsavers
    - 5000 traps total requested

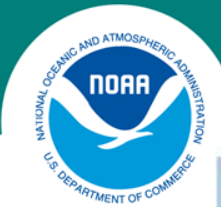


# Purposes

- Test effectiveness of gear
- Deplete lionfish in deep water
- Develop a commercial fishery
- Promote lionfish to consumers







# Trap types

1

**Example of a wood Spiny Lobster Trap**

Wood Slat Trap size shall be no larger than 3' x 2' x 2' or a volume of 12 cubic feet.

These traps shall be constructed with wood slats that are a min. of 1 1/4" wide with a max. spacing between slats of 2 1/4"

Buoy min. 6" in diameter  
Must have spiny lobster endorsement number permanently affixed in legible figures at least 2" tall

Throat (Entrance) min. 6" x 3 1/2"  
Shall be located on the top horizontal section

Spiny lobster trap tag permanently attached

2

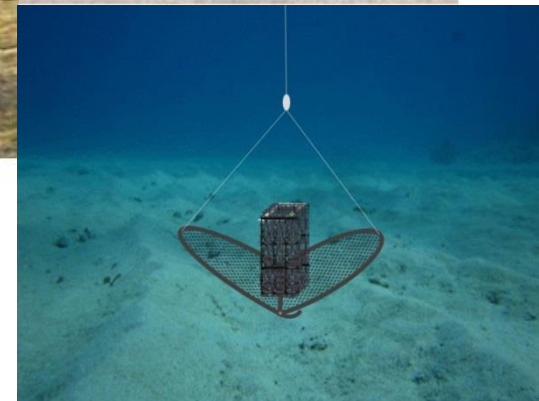


3

4



5

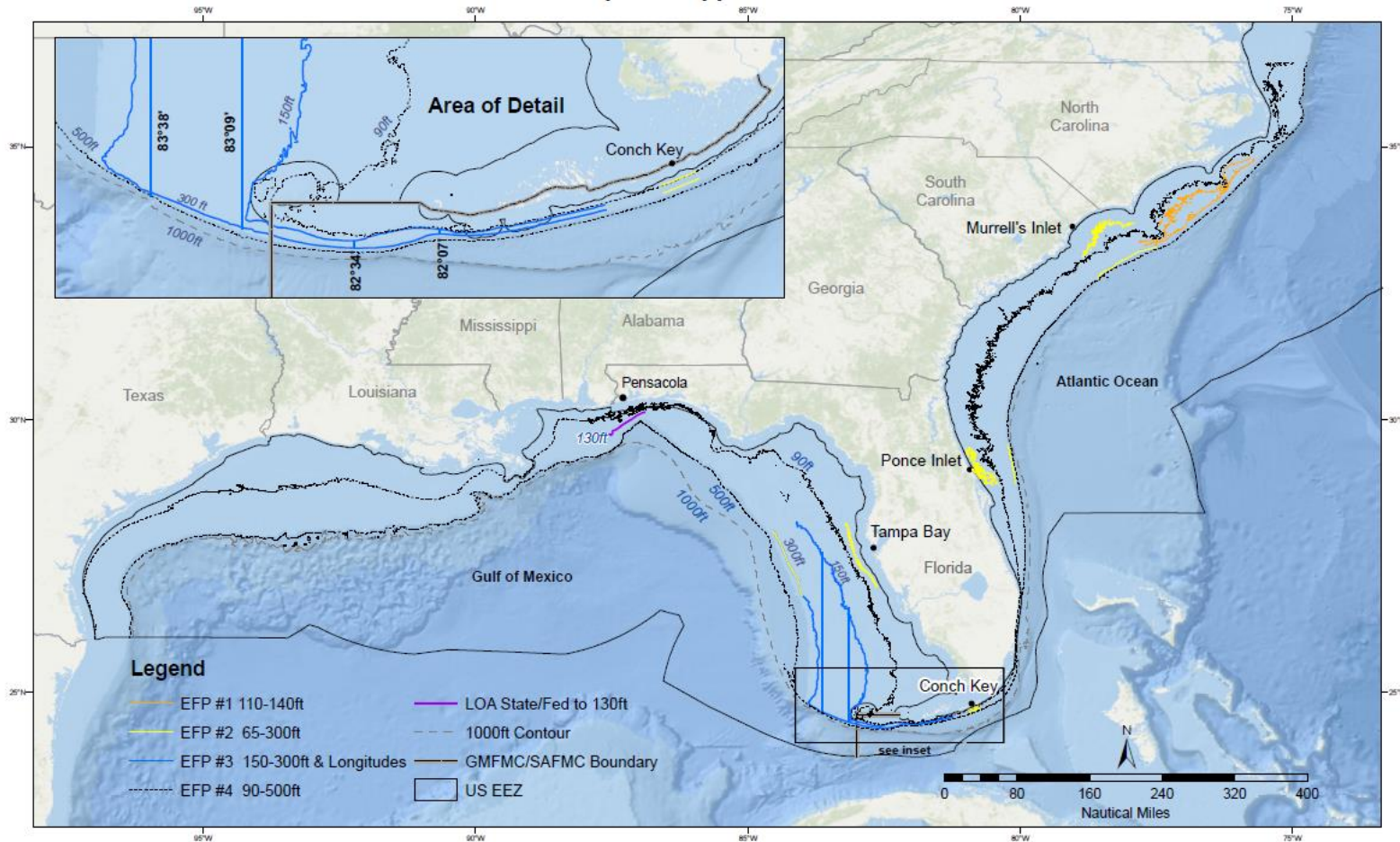




# Locations / Depths

**Depth  
Ranges (ft)  
65-500**

**Lionfish Proposed Application Areas**







# Environmental Assessment

- Manage studies as a whole
- Consider impacts
- Set conditions for EFPs (mitigation)

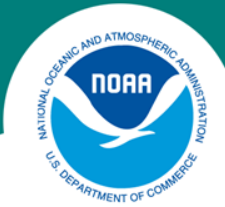




# Impacts Analysis

- Actions
  - Trap types
  - Locations
  - Number of traps per area
  - Bait
- Impacts
  - Bycatch
  - Entanglement
  - Habitat

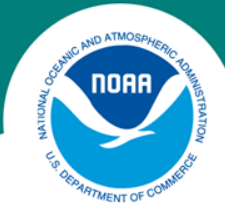




# Potential Mitigation

- Actions
  - Trap types – with or without certificates
  - Locations – sea bass closure, Bryde's whale, FKNMS
  - Number of traps - #/year, #/area
  - Bait – FAD





# Process and Timeline

- Council recommendation to NMFS
- Federal Register notice with 30-day comment period
- Completion of EA
- Agency decision
- EFPs issued to applicants, if approved

# Questions?

More information on LOAs and EFPs

[http://sero.nmfs.noaa.gov/sustainable\\_fisheries/loa\\_efp/index.html](http://sero.nmfs.noaa.gov/sustainable_fisheries/loa_efp/index.html)