



# Southeast For-Hire Integrated Electronic Reporting Program



Michelle Masi, Ph.D. - SEFHIER Program Manager  
NMFS|Southeast Regional Office  
[Michelle.Masi@noaa.gov](mailto:Michelle.Masi@noaa.gov)



# Why SEFHIER Needs Declarations



- Trip declarations indicate when a vessel is departing and the type of trip being taken (commercial, for-hire, private angler, or non-fishing trip)
- Council determined that trip declarations will improve effort estimates and improve the ability of port agents and law enforcement to meet a vessel at the dock
- Reporting burden estimated to average 2 minutes
- Declarations inform NOAA of vessel movement between hourly VMS position reporting



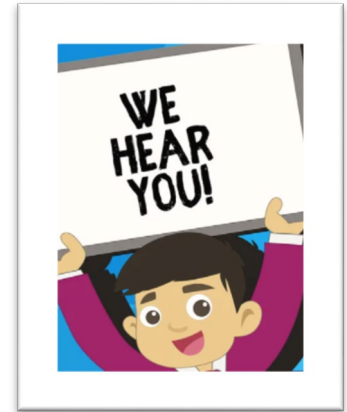
# SEFHIER Declarations

- A SEFHIER declaration is required every time the vessel moves
- SEFHIER declarations are a combo of traditional declarations & a hail-in
  - Hail-in components: estimated return time and landing location
- Estimated return time and landing location fields are used for enforcement & the Validation Survey – for dockside intercepts
- The trip start time, return time and landing location fields will be used to aid SEFHIER staff in matching declarations to logbooks, until an automated process can be identified
  - Recall, not all declarations have a logbook (e.g. no fishing; rec trips)

# Concern Over Current Requirement



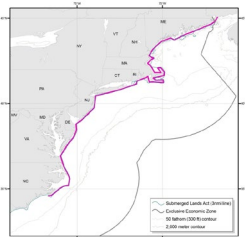
- We heard from constituents that it is a burden to submit a declaration every time a vessel moves
  - E.g. for gas, ice, bait stops that may be just a couple hundred feet away from the slip
- Alternative requirement, suggested by Data Committee:
  - To revise the current requirement to match how the Collision Regulations Line (COLREGS) is used in the NE



# GARFO Program Requirements



- For those fisheries requiring VMS, the vessel positioning is on 24/7, transmitting every hour
- The Greater Atlantic Regional Fisheries Office (GARFO) requires a declaration every time a vessel moves
  - Uses its own demarcation line (separate from COLREGS)
    - Demarcation line is used for specific programs (e.g. Days at Sea)
    - Declarations cannot be changed seaward of the demarcation line





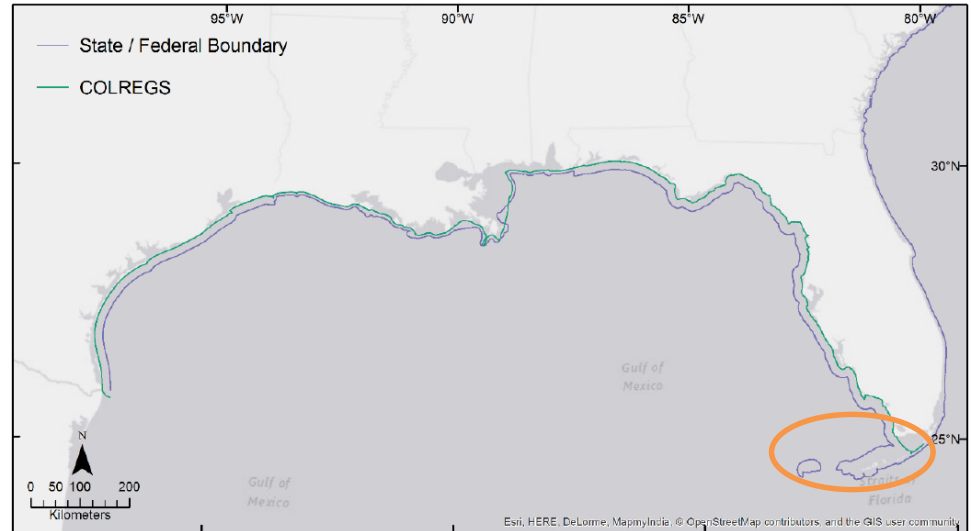
# Demarcation Line Uses In The NE

- Declarations can only be sent shoreward of the demarcation line
- Declarations trigger a trip start event for the Days at Sea program
  - Any time after a trip start event counts against a vessel's days at sea (e.g. scallop, groundfish, monkfish fisheries)
  - The purpose of the demarcation line is to clock the amount of time spent seaward of the line when on a declared Days at Sea trip
    - e.g. The fishing trip starts at the first ping seaward of the demarcation line upon departing port and ends landward of the demarcation time when returning to port



# COLREGS/Demarcation Line Challenges

- COLREGS do not exist throughout the Gulf
- Demarcation lines will be difficult in the Keys
- Fishermen awareness of when they have crossed the line





# Some Alternative Solutions

1. Modify declaration to include an indicator of multiple stops - prior to a fishing trip (e.g. gas, bait, home stops)
  - Still requires a declaration for 'every' trip, but combines multiple stops into one fishing declaration
  - Potentially a yes/no check mark to accommodate any additional stops
  - Would reduce the number of declarations needed on fishing days (i.e., not applicable if only going to get gas and coming back)
2. Consider using demarcation circle ("geofence") around homeport to restrict need for declarations inside the circle
3. Evaluate whether the definition of trip declaration can be modified to allow for pre-trip activities