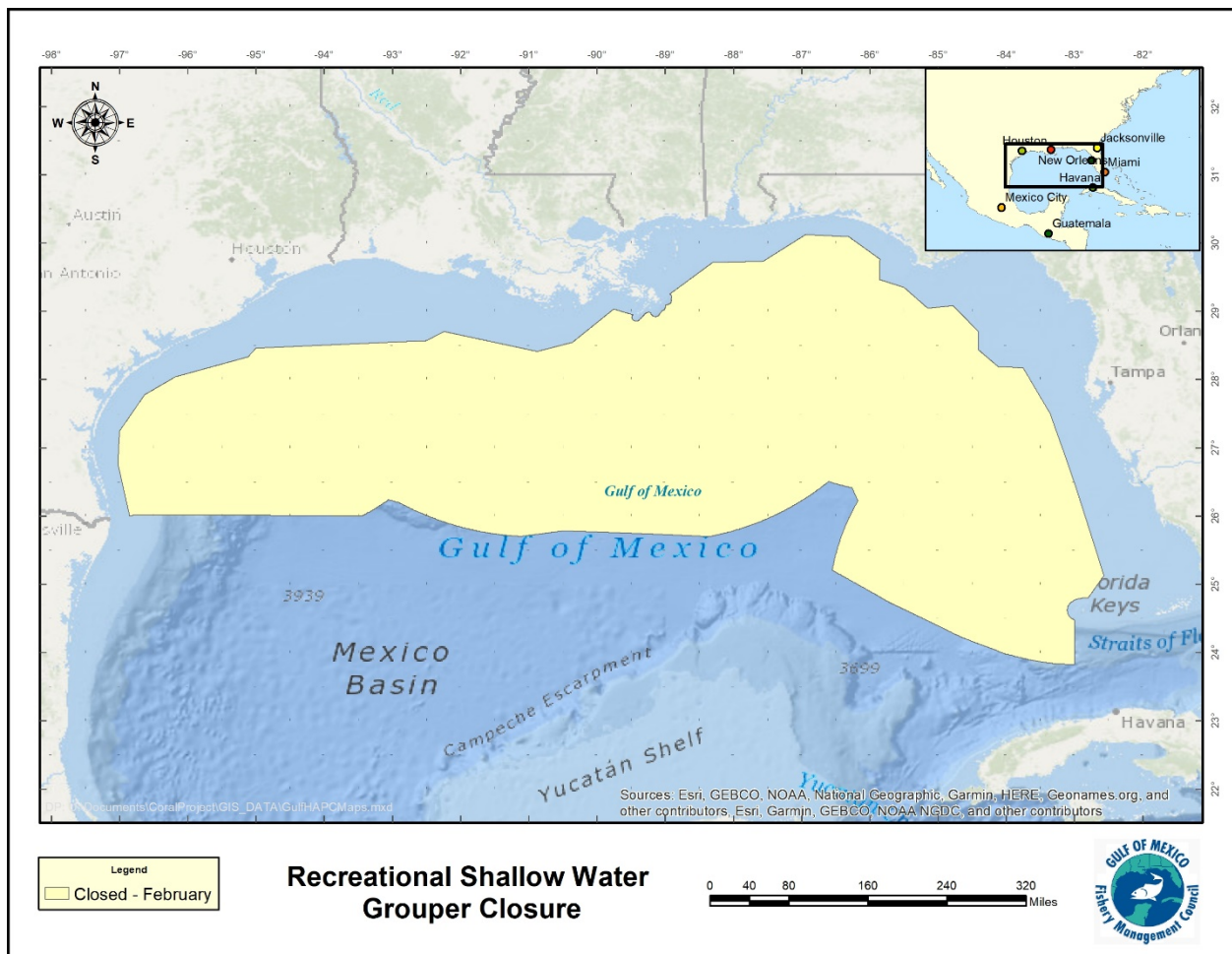


Recreational Shallow Water Grouper Closure

Title 50 CFR: Wildlife and Fisheries – PART 622 FISHERIES OF THE CARIBBEAN, GULF OF MEXICO, AND SOUTH ATLANTIC

Subpart B – Reef Fish Resources of the Gulf of Mexico – §622.34 Seasonal and area closures designed to protect Gulf reef fish

(d) Seasonal closure of the recreational sector for shallow-water grouper (SWG). The recreational sector for SWG, in or from the Gulf EEZ, is closed each year from February 1 through March 31, in the portion of the Gulf EEZ seaward of rhumb lines connecting, in order, the points in the following table. During the closure, the bag and possession limit for SWG in or from the Gulf EEZ seaward of the following rhumb lines is zero.



See coordinates table on next page...

Recreational Shallow Water Grouper Closure		
Position Point	North Latitude	West Longitude
1	24°48'00"	82°48'00"
2	25°07'30"	82°33'60"
3	26°25'60"	82°58'60"
4	27°30'00"	83°21'30"
5	28°10'00"	83°45'00"
6	28°10'60"	84°00'00"
7	28°10'60"	84°06'60"
8	28°26'36"	84°24'48"
9	28°42'30"	84°24'48"
10	29°04'60"	84°46'60"
11	29°02'30"	85°09'00"
12	29°21'00"	85°30'00"
13	29°27'54"	85°51'42"
14	29°45'48"	85°51'00"
15	30°05'36"	86°18'30"
16	30°07'30"	86°56'30"
17	29°43'54"	87°33'48"
18	29°43'00"	88°18'30"
19	29°18'54"	88°50'42"
20	28°58'58"	89°35'06"
21	29°01'60"	89°45'30"
22	28°32'42"	90°21'30"
23	28°24'48"	90°52'42"
24	28°42'18"	92°14'24"
25	28°34'12"	92°30'24"
26	28°27'36"	95°00'00"
27	28°19'60"	95°06'54"
28	28°02'12"	96°11'06"
29	27°46'30"	96°38'06"
30	27°15'00"	97°00'00"
31	26°45'30"	97°01'24"
32	At EEZ boundary	96°51'00"