



SEDAR 79: Mutton Snapper Post Data Workshop Webinar

FWRI Stock Assessment Group

St. Petersburg, FL

9/25/2023





Outline

- Progress on Data Workshop Report
- Review Tentative Stock Assessment Schedule
- Review Updated Data Sources
- Remaining Data Issues/Questions
- Expected Data Sources
 - Through 2022
 - Through 2023



Status of Data Workshop Report

- Index working group report
 - Awaiting group edits, completing GOM camera survey section
- Life History Working Group Report
 - Group edits being incorporated, completing Release Mortality section
- Recreational Statistics Working Group Report
 - Awaiting group edits, completing some tables and figures
- Commercial Statistics Working Group Report
 - Draft nearly complete



Highly Tentative Revised (revised) Schedule

- **Reason for delaying assessment: To allow time to calibrate the FWC State Reef Fish Survey to the MRIP FES time series and use as a sensitivity or base run input**
- **10/2024** – Reviewed by SAFMC and GMFMC SSCs during SAFMC SSC meeting
- **9/4/2024 – 9/6/2024** – Review Workshop (St. Pete, FL)
- 8/19/2024 - Final Assessment Report distribution
- 7/22/2024 - Assessment Report Draft to panel for review
- Week of 7/1/2024 - Assessment Milestone IV webinar
 - Goals: Review sensitivities and uncertainty evaluations. Review projection results. Review Assessment report and responses to ToRs
 - Depends on data being available by **mid-May or early June** at the latest. Gives 1-1.5 months to run 2 models (data through 2023, and data through 2023 and SRFS)



Updated Data Sources Since Data Workshop

- Commercial landings in numbers
- MRIP landings, discards, CVs, and lengths by region: East (SE FL and north) and West (FL Keys and west)
- FIM Inshore Seine YOY index updated through 2022
- A few age records were corrected (n=56) as well as some trip identifiers in Age/Length data



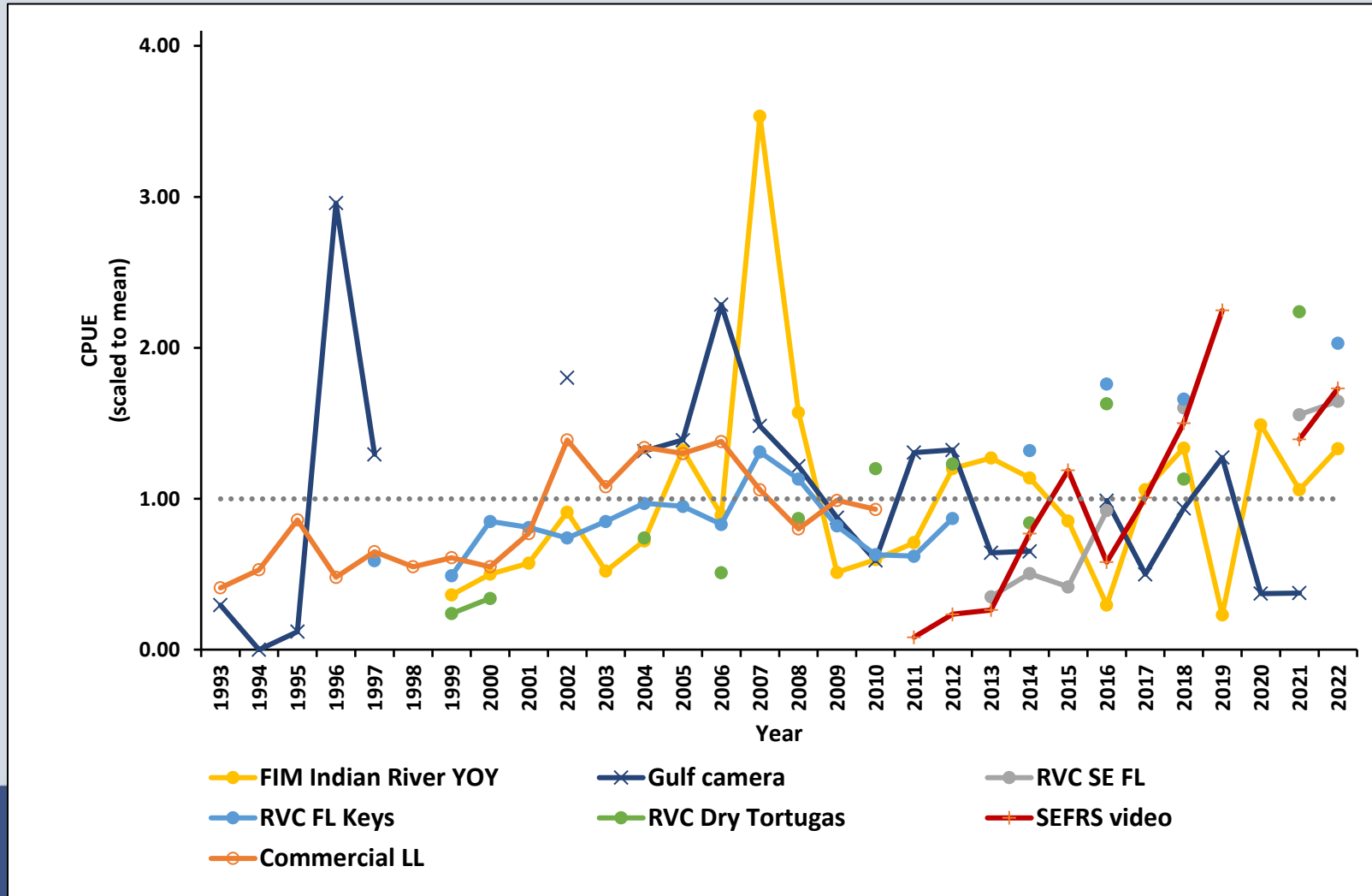
Remaining Data Issues and Questions

1. GOM Camera Survey

- Recommend the removal of 2013 and 2015 because core mutton habitat (Dry Tortugas) was not sampled
- Also remove years prior to 1996 due to sparse positives (MaxN ranged from 0-2).



Suitable and Recommended Indices



Mutton Snapper MaxN								
	PSCG				FWRI			
Year	Fair	Good	Poor	MaxN	Fair	Good	Poor	MaxN
1993	2	0	0	2				
1994	0	0	0	0				
1995	1	0	0	1				
1996	6	1	3	10				
1997	5	7	0	12				
2002	17	2	0	19				
2004	3	8	0	11				
2005	7	14	0	21				
2006	15	9	5	29				
2007	14	13	0	27				
2008	6	5	2	13				
2009	5	7	1	13				
2010	6	14	0	20	0	0	0	0
2011	18	28	1	47	0	0	0	0
2012	15	31	1	47	0	0	0	0
2013	3	0	2	5	0	0	0	0
2014	3	5	3	11	0	0	0	0
2015	0	0	0	0	0	0	0	0
2016	17	11	0	28	1	24	1	26
2017	6	14	0	20	4	6	0	10
2018	16	10	2	28	1	31	1	33
2019	25	28	1	54	4	22	2	28
2020					0	45	4	49
2021					2	42	4	48

Number of Camera Deployments								
	PSCG				FWRI			
Year	Fair	Good	Poor	Total	Fair	Good	Poor	Total
1993	13	0	19	32				
1994	18	9	4	31				
1995	16	2	6	24				
1996	33	1	8	42				
1997	12	21	21	54				
2002	25	6	17	48				
2004	10	16	0	26				
2005	30	22	26	78				
2006	22	22	41	85				
2007	32	30	48	110				
2008	30	11	38	79				
2009	26	26	28	80				
2010	28	26	25	79	0	0	45	45
2011	31	28	43	102	0	0	205	205
2012	36	25	44	105	0	0	215	215
2013	5	0	39	44	0	0	184	184
2014	8	17	53	78	0	0	278	278
2015	2	0	33	35	0	0	220	220
2016	24	16	53	93	43	86	218	347
2017	23	27	75	125	48	69	169	286
2018	27	18	48	93	27	95	133	255
2019	26	31	59	116	41	99	206	346
2020					3	140	321	464
2021					18	148	381	547

Remaining Data Issues and Questions

2. Should region landed or region caught be used to weight the sampled length/age comps?
 - Commercial landings and most lengths have region caught
 - MRIP - Region caught not available
 - SRHS – Region caught (i.e., Dry Tortugas) available prior to 2013



Expected Data Sources

- Through 2022
 - GOM Camera Survey Index (Oct 2023)
- Through 2023 (available by May/early June 2024 at the latest)

• Landings

- MRIP
- SRFS
- COM
- HB



• Discards

- MRIP
- SRFS
- COM
- HB



• Indices

- RVC
- SERFS Cam
- GOM Cam Survey
- FIM YOY



• Lengths

- MRIP
- COM
- HB
- RVC
- FIM YOY

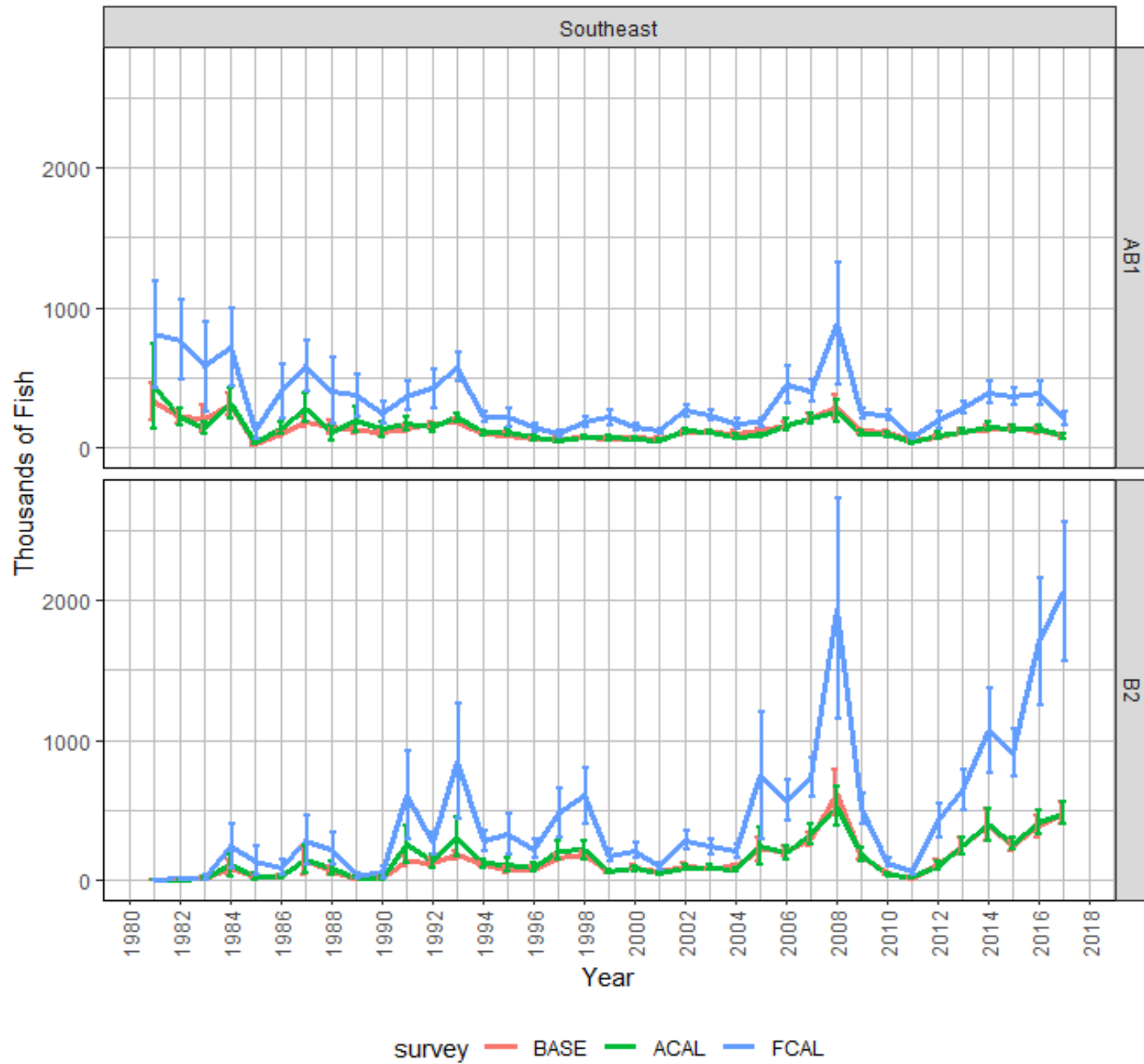


- Ages

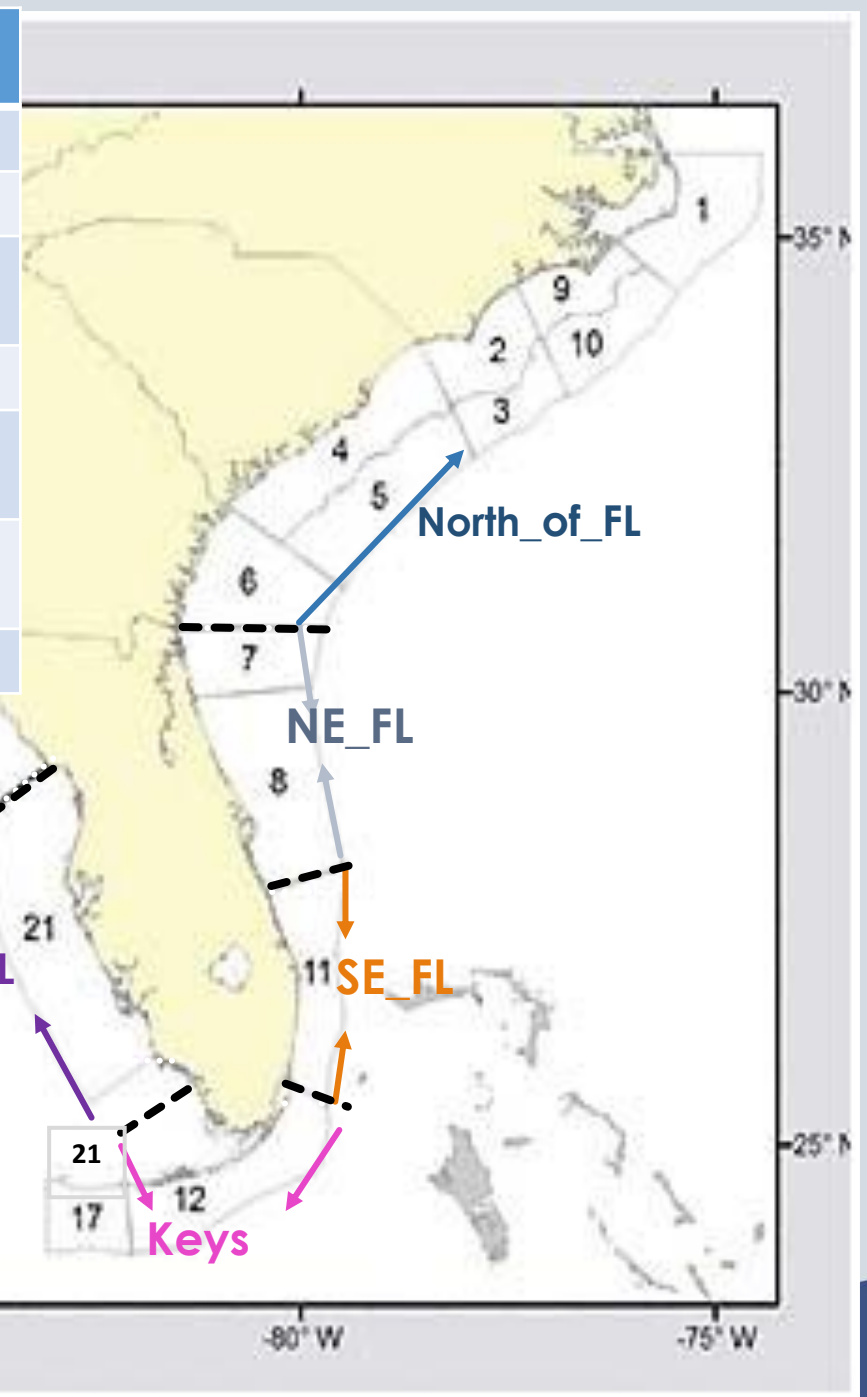


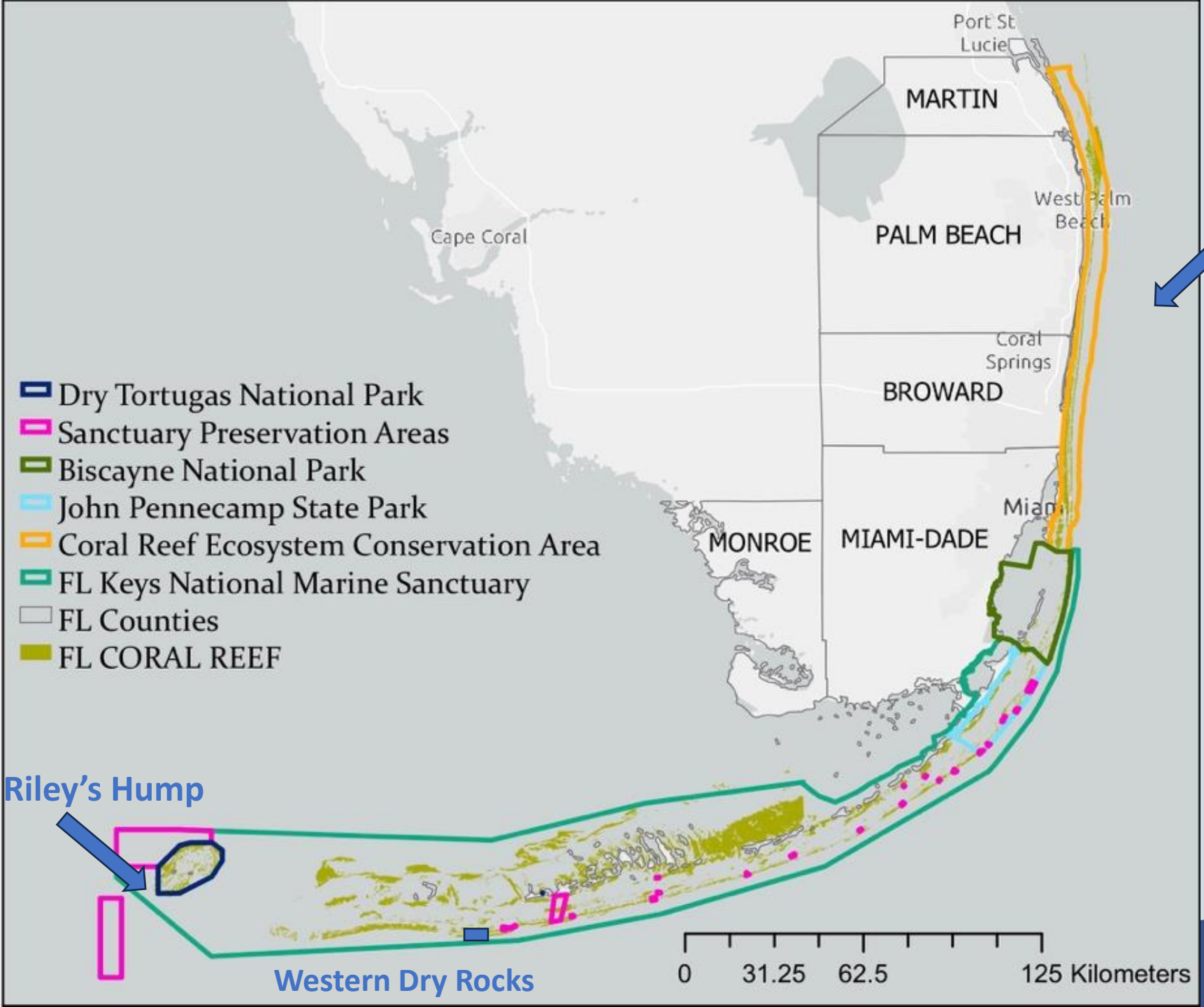
An underwater photograph showing a large school of fish swimming in clear blue water above a rocky seabed covered in green algae. The fish are mostly silver and grey in color, with some showing yellowish highlights. The scene is captured from a slightly elevated perspective, looking down at the seabed.

Thank you for your attention!
Questions?



MTS Region	FL Counties	MRIP	Statistical Grids	SRHS
West_of_FL	-	-	11 - 21	24 -27
NW_FL	Escambia-Dixie	1	7-10	~23
SW_FL	Levy - Collier	2	3-6	21, old 18,22
Keys	Monroe	3	1, 2, 2479-2482	17, 12
SE_FL	Indian River – Miami-Dade	4	2580, 2680, 2780, 2579, 2679, 2779	11
NE_FL	Nassua - Brevard	5	2880, 2980, 3080, 2879, 2979, 3079	7, 8
North_of_FL	-	-	North of 31°	1 – 6, 9,10





SEFCRI

Riley's Hump

Western Dry Rocks

